



# LOW-SPEED STREETS

are the heart of any  
community

**Excessive speed** is when a vehicle exceeds the posted speed limit



**40-50%** of people drive above the speed limit



Every **1 km/h** increase in speed = Results in **4-5%** increase in fatal crashes



**1 in 3** deaths on the roads in high-income countries is due to speed

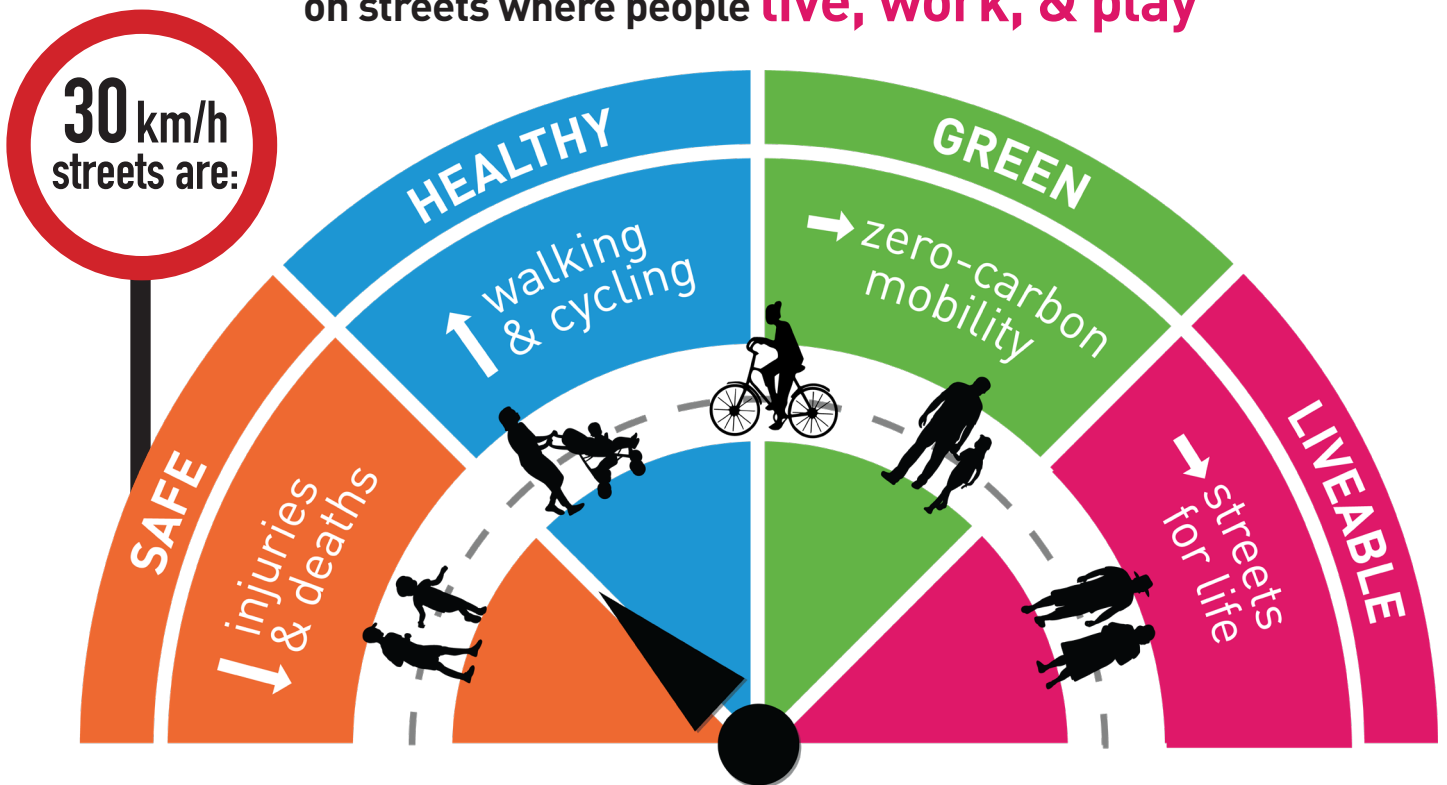
The lower the speed of the vehicle, the lower the **risk** of injury and death for pedestrians

**99%**  
likelihood of **surviving** at  
**30 km/h**

**80%**  
likelihood of **surviving** at  
**50 km/h**



**30 km/h** speed limits should be adopted as appropriate on streets where people **live, work, & play**





# 5 ACTIONS TO MAKE

## #StreetsforLife

1

Build or modify roads to include features that calm traffic



2

Establish speed limits appropriate to the function of each road



3

Enforce speed limits



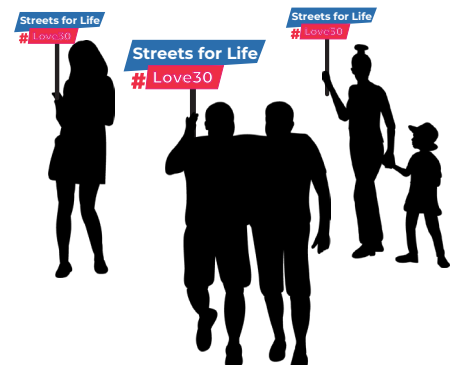
4

Install in-vehicle technologies



5

Raise awareness about the dangers of speeding



For more information:  
<https://www.who.int/teams/social-determinants-of-health/safety-and-mobility/united-nations-road-safety-week>