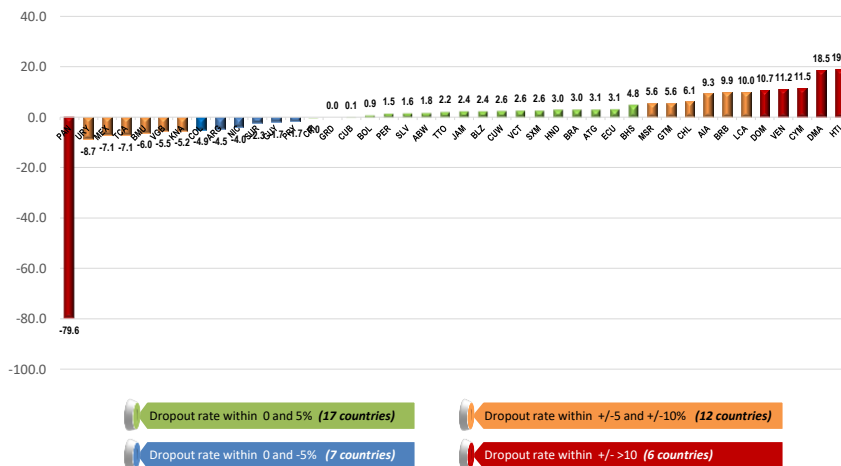




Dropout rate between DTP1 and MMR1 Latin America and the Caribbean, 2018



Source: Country reports through the PAHO-WHO/UNICEF Joint Reporting Form (JRF), 2019.

Table.1
Classification of Suspect Measles, Rubella, and Congenital Rubella Syndrome (CRS) Cases for Weeks 01-39, 2019

Subregion and Country	Susp. Cases 2019	Measles Confirmed 2019				Year/Week Last Conf. Measles case	Rubella Confirmed 2019			Year/Week Last Conf. Rubella Case	Diagnosis of Discarded Cases 2019		Congenital Rubella Syndrome			Year/Week Last Conf. CRS Case			
		Clin.	Lab.	EPI link	Total		Clin.	Lab.	Total		Dengue	Others	Susp.	Conf.	CRI*				
AND	BOL	72	0	0	...	0	0	0	2000-40	0	0	0	2006-03	1	30	8	0	0	...
	COL	3614	0	203	...	203 ^a	2019-37	0	0	0	2012-31	1	2937	253	0	0	0	2005-34	
	ECU	83	0	0	0	0	2018-33	0	0	0	2004-49	0	78	0	2011-14	
	PER	354	0	2	...	2	2019-17	0	0	0	2009-04	0	341	0	0	0	0	2007-16	
	VEN	461	32	394	23	449 ^b	2019-34	0	0	0	2007-51	9	186	19	0	0	0	...	
BRA	BRA	31650	259	4217	...	4476	2019-37	2014-40	0	5839	28	0	0	0	2009-34	
CAP	CRI	49	0	10	...	10	2019-13	0	0	0	2001-39	0	38	25	0	0	0	...	
	GTM	332	0	0	...	0	2018-03	0	0	0	2006-31	1	201	2	0	0	0	2005-00	
	HND	300	0	0	...	0	1998-16	0	0	0	2004-11	0	288	16	0	0	0	2001-00	
	NIC	636	0	0	...	0	1994-14	0	0	0	2004-19	9	593	24	0	0	0	2005-00	
	PAN	57	0	0	...	0	2011-20	0	0	0	2002-48	0	55	0	0	0	0	...	
	SLV	412	0	0	...	0	2001-19	0	0	0	2006-30	0	412	0	0	0	0	2001-00	
CAR	CAR	290	0	3	1	4	2019-07	0	0	0	2008-18	0	276	43	0	0	0	1999-00	
LAC	CUB	2397	0	1	...	1 ^b	2019-24	0	0	0	2004-06	0	2397	0	0	0	0	1989-10	
	DOM	140	0	0	...	0	2011-18	0	0	0	2007-45	7	123	0	0	0	0	...	
	HTI	183	0	0	...	0	2001-39	0	0	0	2006-21	0	70	18	0	0	0	...	
MEX	MEX	4131	0	17	...	17 ^b	2019-37	0	0	0	2018-14	0	3358	0	0	0	0	...	
NOA	CAN	92	...	103	9	112	2019-39	2016-06	0	0	0	2018-39	
	USA	0	...	42	1201	1243 ^c	2019-39	...	1	1	2019-03	0	0	0	2017-00	
SOC	ARG	164	0	24	...	24	2019-39	0	3	3	2019-16	0	135	0	0	0	0	2009-27	
	CHL	697	0	8	...	8	2019-36	0	1	1	2019-14	0	675	111	0	0	0	...	
	PRY	1112	0	0	...	0	1998-44	0	0	0	2005-21	88	841	3	0	0	0	2003-06	
	URY	67	0	9	...	9	2019-22	2001-37	0	56	0	0	0	
TOTAL		47293	291	5033	1232	6556	--	0	5	5	--	116	18929	550	0	0	0	--	

*Congenital Rubella Infection.

...No updated report received

(a) Boletín Epidemiológico Semanal, SE 37-2019, Instituto Nacional de Salud, Colombia; (b) PAHO/WHO. Epidemiological Update: Measles. 25 September 2019, Washington, D.C.: PAHO/WHO; 2019; (c) Centers for Disease Control and Prevention (<https://www.cdc.gov/measles/cases-outbreaks.html>). Cases as of 26 September 2019. Case count is preliminary and subject to change. Data are updated every Monday;



Table No.2
Infection Source of Measles and Rubella Confirmed Cases for the Period of Weeks 01-39, 2019

Subregion and Country		Measles				Rubella			
		I	IR	En.	U	I	IR	CAC	U
AND	BOL				17				
	COL	64	122						
	ECU								
	PER	1	1						
	VEN			449					
BRA	BRA	39		48	4389				
	CRI	1	9						
	GTM								
	HND								
	NIC								
CAP	PAN								
	SLV								
	CAR	4							
	LAC	1							
	CUB*								
MEX	DOM								
	HTI								
	MEX	5	12						
NOA	CAN	41	62		9				
	USA	57	1169		17	1			
	USA								
SOC	ARG	5	1		18	3			
	CHL	3	3		2	1			
	PRY								
	URY	2	6		1				
	URY								
TOTAL		223	1385	497	4453	5	0	0	0

Table No.3
Measles/Rubella Suspect Cases Under Investigation for the Period of Weeks 01-39, 2019

Country	Pending Cases 2018	Cumulative 2019	Week of Onset							% Pend. Cases
			1-34	35	36	37	38	39		
BOL	3	41	41	0	57
COL	184	115	111	2	2	0	0	0	0	3
ECU	84	1	1	0	0	0	0	0	0	1
PER	1	11	8	0	1	1	0	1	0	3
VEN	2	4	4	0	0	0	0	0	...	1
BRA	465	20873	14753	3248	2478	394	66
CRI	23	1	1	0	0	2
GTM	12	130	115	3	8	3	0	1	...	39
HND	0	12	12	0	0	0	0	0	0	4
NIC	0	34	21	1	5	2	5	0	0	5
PAN	0	2	1	0	0	0	1	0	0	4
SLV	0	0	0	0	0	0	0	0	0	0
CAR	0	10	6	1	1	1	1	0	0	3
LAC	0	0	0	0	0	0
CUB*	0	10	10	7
DOM	0	10	10	7
HTI	56	113	112	0	1	0	0	0	0	62
MEX	0	757	460	45	73	54	70	55	18	18
CAN
USA
ARG	206	2	2	0	0	0	0	0	0	1
CHL	0	12	5	0	1	3	2	1	2	2
PRY	9	183	138	8	6	5	11	15	16	16
URY	0	2	2	0	0	0	3
TOTAL		1045	22313	15803	3308	2576	463	90	73	47

I: Imported; IR: Import-related; En: Endemic case; U: Unknown.

... No updated report received

(a) PAHO/WHO. Epidemiological Update: Measles.7 August 2019, Washington, D.C.: PAHO/WHO; 2019

Table 4
Indicators of Integrated Measles/Rubella Surveillance for Period of Weeks 01-39, 2019

Subregion and Country		Sites Reporting Weekly		% Cases with Adequate Investigation	% Cases with Adequate Sample	% Blood Samples Received in Lab. ≤5 days	% Lab. Results ≤4 days	Rate of Suspected Cases Last 52 weeks (2018/40-2019/39)	
		Total Units	% This Week					Measles/Rubella (100,000 pop.)	CRS (10,000 lb)
AND	BOL	2657	...	63	81	77	77	1.0	0.3
	COL	5211	98	93	96	92	97	7.4	8.5
	ECU	2184	...	87	98	80	89	1.5	0.0
	PER	7781	...	87	97	85	48	2.1	0.0
	VEN	13092	...	100	57	10	17	1.9	0.3
CAP	BRA	14.8	0.1
	CRI	57	...	73	86	86	79	1.3	3.7
	GTM	1541	...	86	97	63	86	2.1	0.0
	HND	470	91	78	99	81	98	3.7	2.2
	NIC	185	100	96	94	93	82	11.3	6.0
CAR	PAN	324	...	96	95	75	96	1.7	0.0
	SLV	1281	92	74	99	97	94	8.1	0.0
	CAR	763	81	87	97	8	86	4.6	13.2
	LAC	CUB	168	...	100	100	100	28.8	0.0
	DOM	247	...	19	96	84	76	1.3	0.0
MEX	HTI	652	63	90	93	74	64	1.9	0.7
	MEX	20319	97	95	99	91	89	3.5	0.0
	CAN
NOA	USA
	ARG	784	...	20	95	81	60	0.8	0.0
	CHL	767	84	24	97	96	98	5.3	10.7
	PRY	1259	99	74	87	85	76	20.6	0.2
	URY	155	...	97	55	55	46	2.0	0.0
Total and Average*		59897	49	88	95	87	88	7.7	1.1

*Weighted

... No updated report received