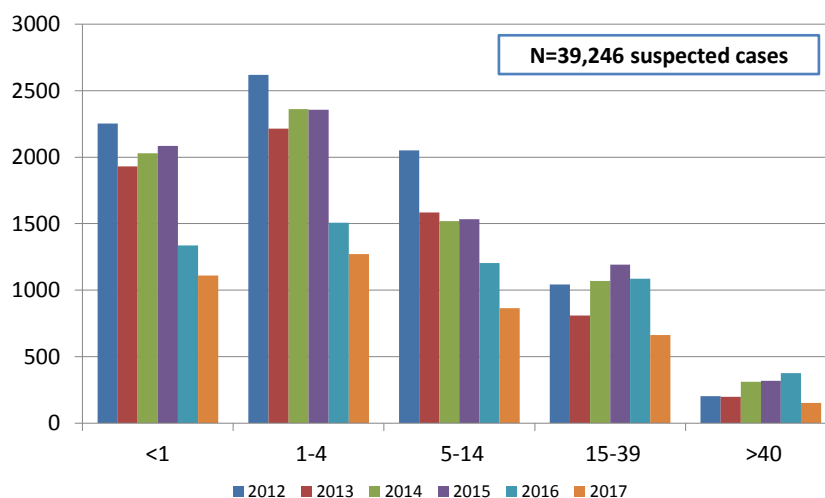


Measles/Rubella Weekly Bulletin



Distribution of suspected measles and rubella cases by age group. Latin America and the Caribbean, 2012-2017*



Source: SysVPD, MESS, and country reports to FGL-IM.
*Data as of 16 November 2017. Excluding countries with aggregated data.

Table.1
Classification of Suspect Measles, Rubella, and Congenital Rubella Syndrome (CRS) Cases for the Period of Weeks 01-45, 2017

Subregion and Country	Susp. Cases 2017	Measles Confirmed 2017			Year/Week Last Conf. Measles case	Rubella Confirmed 2017			Year/Week Last Conf. Rubella Case	Diagnosis of Discarded Cases 2017		Congenital Rubella Syndrome			Year/Week Last Conf. CRS Case	
		Clin.	Lab.	Total		Clin.	Lab.	Total		Dengue	Others	Susp.	Conf.	CRI*		
AND	BOL	54	0	0	0	2000-40	0	0	0	2006-03	0	49	0	0	0	...
	COL	993	0	0	0	2015-35	0	0	0	2012-31	1	978	380	0	0	2005/34
	ECU	205	0	0	0	2016-14	0	0	0	2004-49	0	191	0	0	0	2004/49
	PER	283	0	0	0	2015-25	0	0	0	2009-04	3	276	0	0	0	2007/16
	VEN	411	0	57	57	2017-41	0	0	0	2007-51	1	323	37	0	0	...
BRA	BRA	1413	0	0	0	2015-32	0	0	0	2014-40	0	1262	50	0	0	2009/34
CAP	CRI	87	0	0	0	2014-09	0	0	0	2001-39	0	82	148	0	0	...
	GTM	85	0	0	0	1998-05	0	0	0	2006-31	1	84	2	0	0	2005/00
	HND	139	0	0	0	1998-16	0	0	0	2004-11	0	134	32	0	0	2001/00
	NIC	216	0	0	0	1994/14	0	0	0	2004-19	0	209	30	0	0	2005/00
	PAN	45	0	0	0	2011-20	0	0	0	2002-48	0	45	1	0	0	...
	SLV	184	0	0	0	2001-19	0	0	0	2006-30	0	168	0	0	0	2001/00
CAR	CAR	159	0	0	0	2011/48	0	0	0	2008/18	0	151	66	0	0	1999/00
LAC	CUB	1307	0	0	0	1993/27	0	0	0	2004/06	0	1307	0	0	0	1989/10
	DOM	138	0	0	0	2011-18	0	0	0	2007-45	0	96	0	0	0	...
	HTI	121	0	0	0	2001-39	0	0	0	2006-21	0	104	17	0	0	...
MEX	MEX	3140	0	0	0	2015-02	0	1	1	2017-19	0	2627	0	0	0	...
NOA	CAN	...	0	46	46 ^a	2017/36	0	0	0	2016/06	0	0	0	2015/50
	USA	...	0	120	120 ^a	2017/40	0	3	3	2017/16	0	0	0	1	...	2017/00
SOC	ARG	274	0	3	3	2017-17	0	0	0	2014-22	0	166	111	0	0	2009/27
	CHL	145	0	0	0	2015-27	0	0	0	2011-25	0	139	118	0	0	...
	PRY	445	0	0	0	1998-44	0	0	0	2005-21	1	439	3	0	0	2003/06
	URY	0	0	0	0	1999/08	0	0	0	2001/37	0	0	0	0	0	...
TOTAL		9844	0	226	226	--	0	4	4	--	7	8830	995	1	0	--

*Congenital Rubella Infection; (a) Provisional data.
...No report received



Measles/Rubella Surveillance

Table No.2
Infection Source of Measles and Rubella Confirmed Cases for the Period of Weeks 01-45, 2017

Subregion and Country		Measles				Rubella			
		I	IR	CAC	U	I	IR	CAC	U
AND	BOL								
	COL								
	ECU								
	PER								
	VEN	1		54	2				
BRA	BRA								
	CRI								
	GTM								
	HND								
	NIC								
CAP	PAN								
	SLV								
	CAR								
	CUB								
	DOM								
MEX	HTI								
	MEX					1			
NOA	CAN	8	33		5				
	USA	74	43		3	3			
SOC	ARG	1	2						
	CHL								
	PRY								
	URY								
TOTAL		84	78	54	10	4	0	0	0

Table No.3
Measles/Rubella Suspect Cases Under Investigation for the Period of Weeks 01-45, 2017

Country	Pending Cases 2016	Cumulative 2017	Week of Onset							% Pend. Cases
			1-40	41	42	43	44	45		
BOL	0	5	5	0	9	
COL	8	14	12	0	1	1	0	0	1	
ECU	9	14	14	7	
PER	1	4	1	0	0	1	1	1	1	
VEN	0	29	24	0	1	3	1	0	7	
BRA	0	150	89	11	15	18	11	6	11	
CRI	1	5	4	1	0	0	0	...	6	
GTM	3	0	0	0	0	
HND	0	5	5	0	0	0	0	0	4	
NIC	0	7	2	0	2	2	1	0	3	
PAN	0	0	0	0	0	0	0	0	0	
SLV	1	16	13	2	0	0	1	0	9	
CAR	0	8	5	0	0	0	1	2	5	
CUB	0	0	0	0	0	0	0	0	0	
DOM	2	42	42	0	0	0	0	0	30	
HTI	0	17	17	0	0	0	0	0	14	
MEX	0	512	437	13	17	12	21	12	16	
CAN	
USA	
ARG	0	105	90	4	7	2	2	0	38	
CHL	0	6	2	1	0	0	0	3	4	
PRY	0	5	3	0	0	0	0	2	1	
URY	0	0	0	0	
TOTAL	25	944	765	32	43	39	39	26	10	

I: Imported; IR: Import-related; CAC: Country-acquired case
U: Unknown.

... No report received

Table 4
Indicators of Integrated Measles/Rubella Surveillance for the Period of Weeks 01-45, 2017

Subregion and Country	Sites Reporting Weekly		% Cases with Adequate Investigation	% Cases with Adequate Sample	% Blood Samples Received in Lab. ≤5 days	% Lab. Results ≤4 days	Rate of Suspected Cases Last 52 weeks (2017/46-2017/45)		
	Total Units	% This Week					Measles/Rubella (100,000 pop.)	CRS (10,000 lb)	
AND	BOL	3514	...	98	100	72	65	0.6	0.0
	COL	5212	96	76	97	86	95	2.4	12.7
	ECU	3208	...	96	100	83	86	1.4	0.0
	PER	7771	...	83	94	69	53	1.1	0.0
	VEN	13092	...	100	96	56	68	1.5	0.7
CAP	BRA	16906	68	62	58	58	55	0.7	0.2
	CRI	57	...	74	95	83	87	1.9	31.2
	GTM	1541	94	47	82	0.6	0.0
	HND	470	91	58	99	76	99	1.7	3.3
	NIC	185	100	86	100	94	89	3.7	6.6
CAR	PAN	348	...	87	100	84	93	1.3	0.1
	SLV	1256	...	70	91	97	90	3.4	0.0
	CAR	700	76	93	94	10	78	2.2	5.5
	CUB	168	...	100	100	100	100	13.3	0.0
	DOM	247	...	1	98	51	56	1.3	0.0
MEX	HTI	368	84	85	98	59	72	1.2	1.7
	MEX	20146	...	97	97	92	90	2.6	0.0
NOA	CAN
	USA
SOC	ARG	809	...	18	78	63	65	0.7	3.0
	CHL	783	84	34	82	82	98	0.9	8.0
	PRY	1159	96	80	98	90	96	7.7	0.2
	URY	335	...	0	0	0	0	0.0	0.0
Total and Average*		78275	25	83	91	81	83	1.8	1.4

*Weighted

... No report received