

HIV in Latin American and the Caribbean (LAC)

Estimated **2 million** people living with HIV (2015)

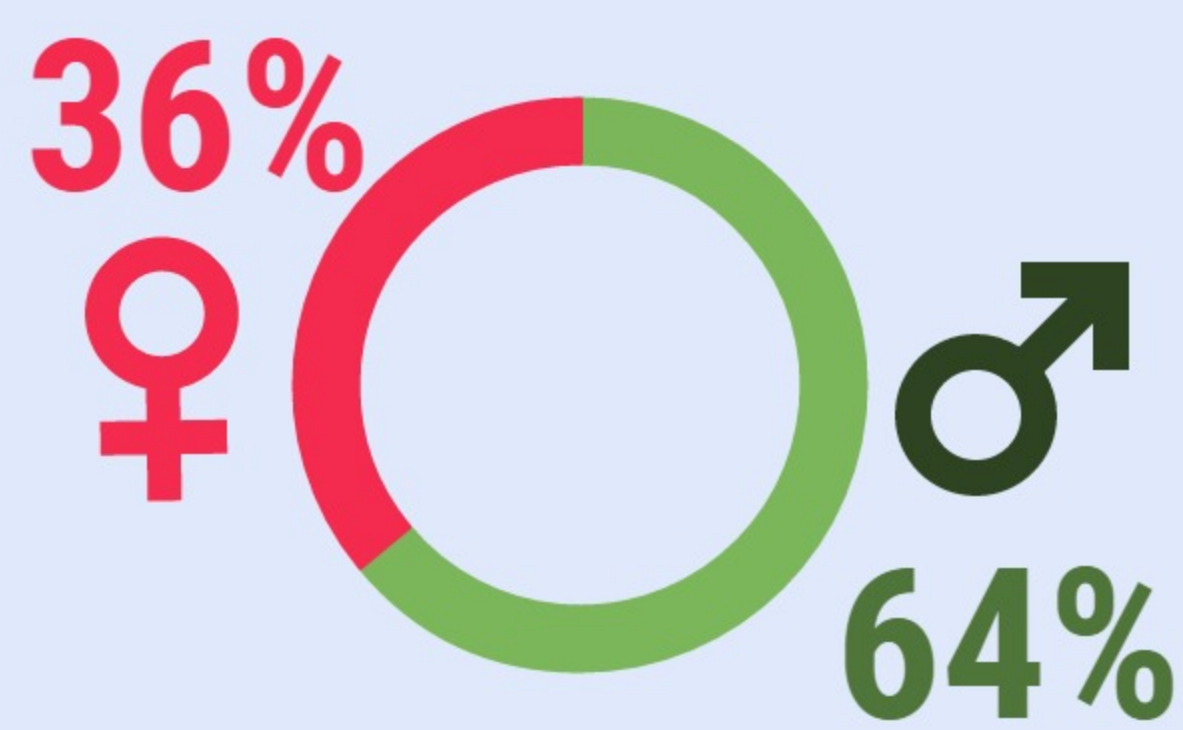
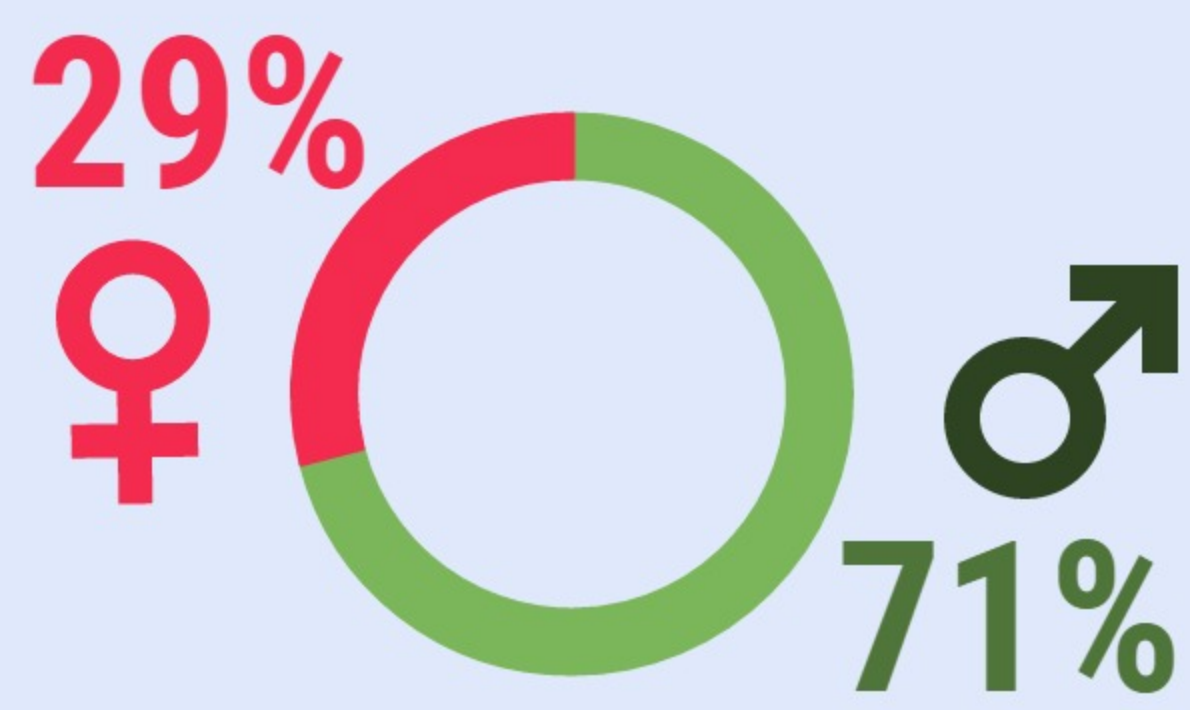
1,7 million in Latin America

300 thousand in the Caribbean

Over **100,000** new HIV infections (2015)

Latin American

the Caribbean



↓ **23%** new HIV infections from 2000 to 2015 (LAC)

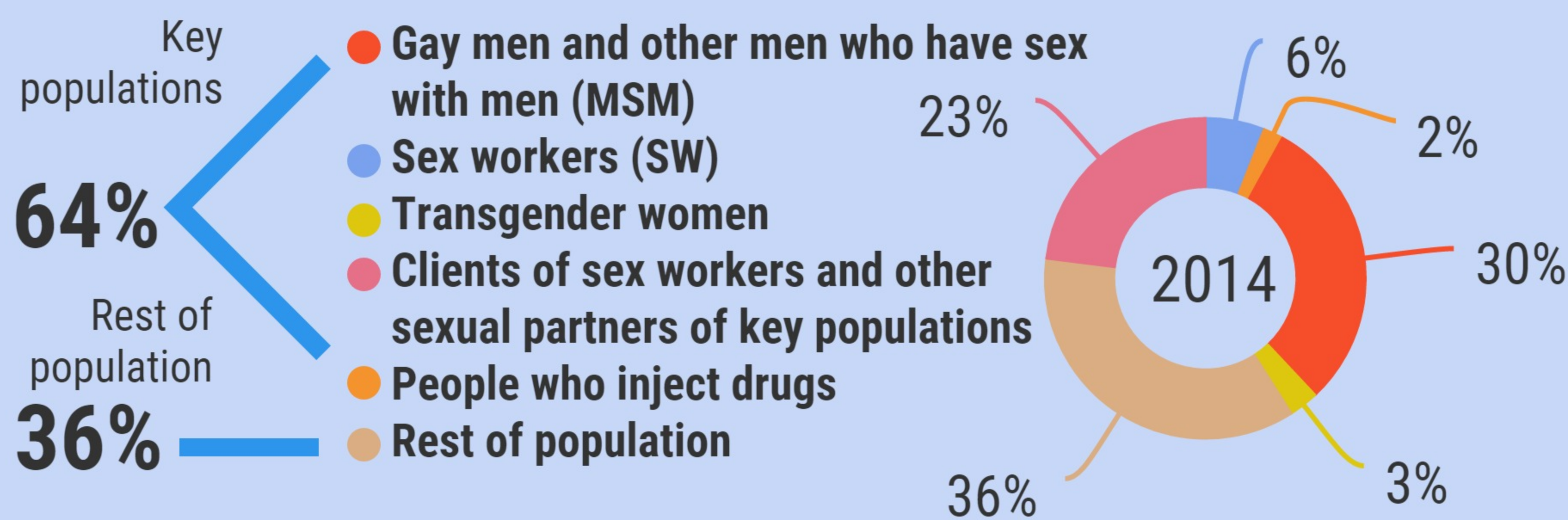
Adult men

↑ **17%** in Latin America and **3%** in the Caribbean 2010 to 2015

Adult women

▬ **stable** in Latin America and in the Caribbean 2010 to 2015

HIV concentrated in key populations



Stigma, discrimination and criminalization are day-to-day barriers to HIV prevention and care

50,000 estimated HIV deaths/year (2015)

↓ **25%** from 2000 to 2015 (LAC)



↓ **44%** in the Caribbean
↓ **16%** in Latin America

STIs are associated with higher HIV transmission

Chlamydia

the most common bacterial STI

♀ 18,805 and ♂ 4,451 thousand estimated infections in 2012 (the Americas)

Gonorrhea

high risk of antibiotic resistance

♀ 1,936 and ♂ 1,584 thousand estimated infections in 2012 (the Americas)

Syphilis

♀ 1,003 and ♂ 992 thousand estimated infections in 2012 (the Americas)

Syphilis prevalence (2015)

- median MSM 9.8%

- median SW 2.8%

- median pregnant women 0.7%

Human papillomavirus

83,200 estimated new cases of cervical cancer in 2012 (the Americas)

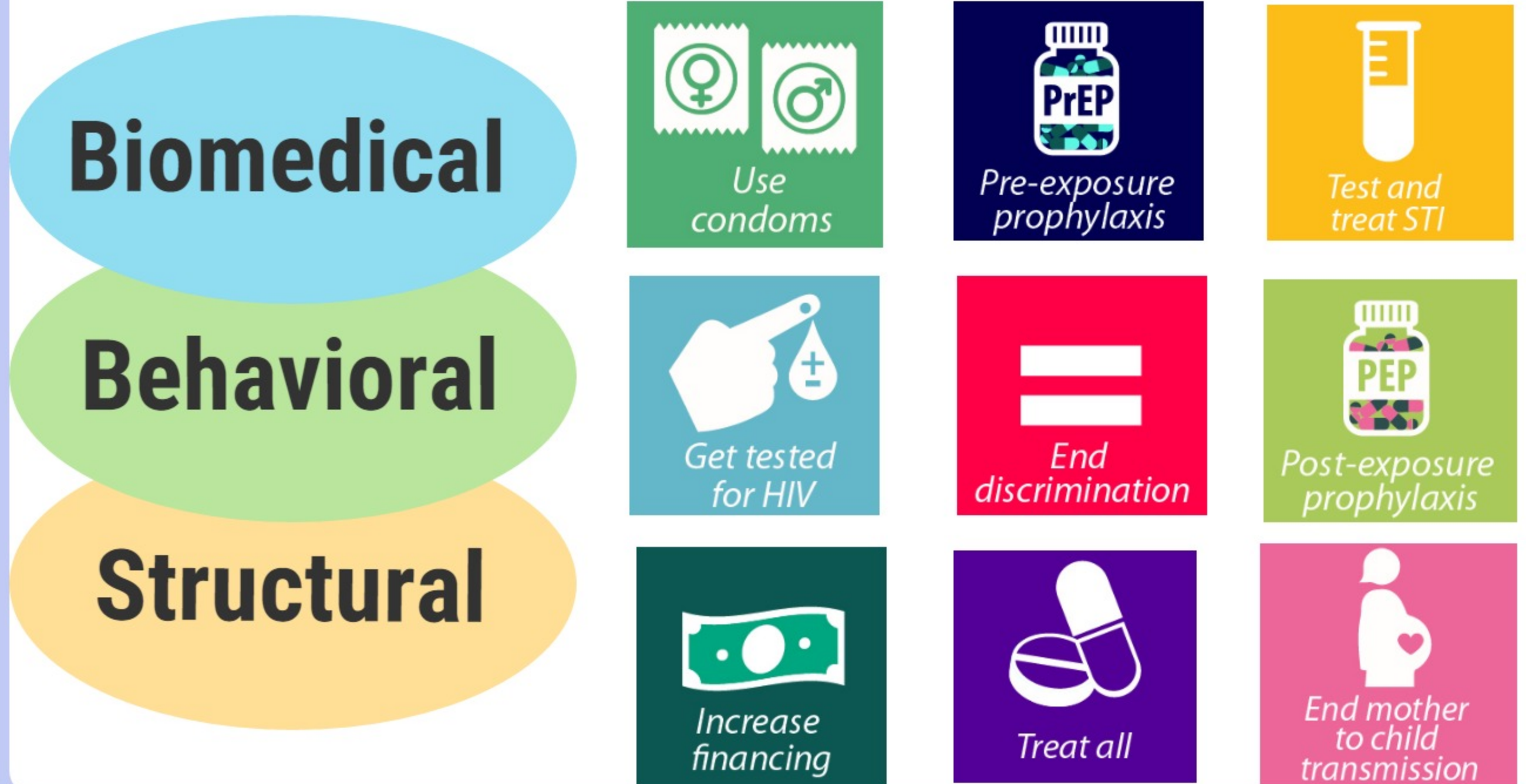
35,700 estimated cervical-cancer-related deaths in 2012 (the Americas)



HIV in Latin American and the Caribbean (LAC)

HIV Prevention

Combination Prevention Framework



HIV Testing

2015

25% of all persons with HIV do not know about their infection

27% are diagnosed very late (CD4 < 200)

72% of pregnant women are tested for HIV

Antiretroviral therapy (ART)

2015

55% Adults accessing ART

88% Pregnant women accessing ART to prevent mother-to-child transmission

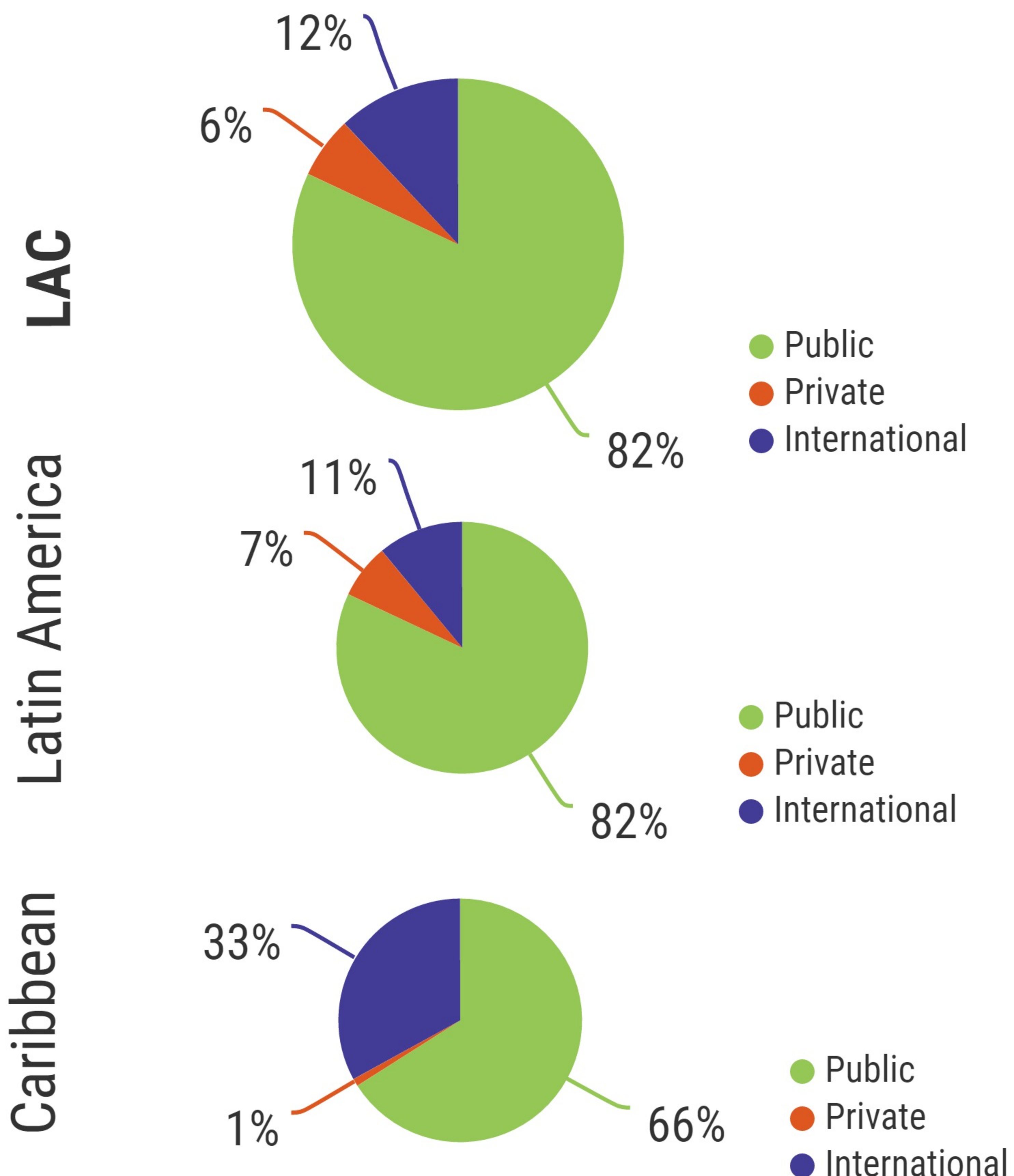
64% Children accessing ART (aged 0-14)

74% of people on ART had suppressed viral load and are unlikely to transmit HIV to others

Investment for HIV

2013

Sources of funding for HIV



Use of funds for HIV response

