

Burden of NCDs in LAC by subregions and selected countries: The role of social determinants of health

Washington DC meeting,

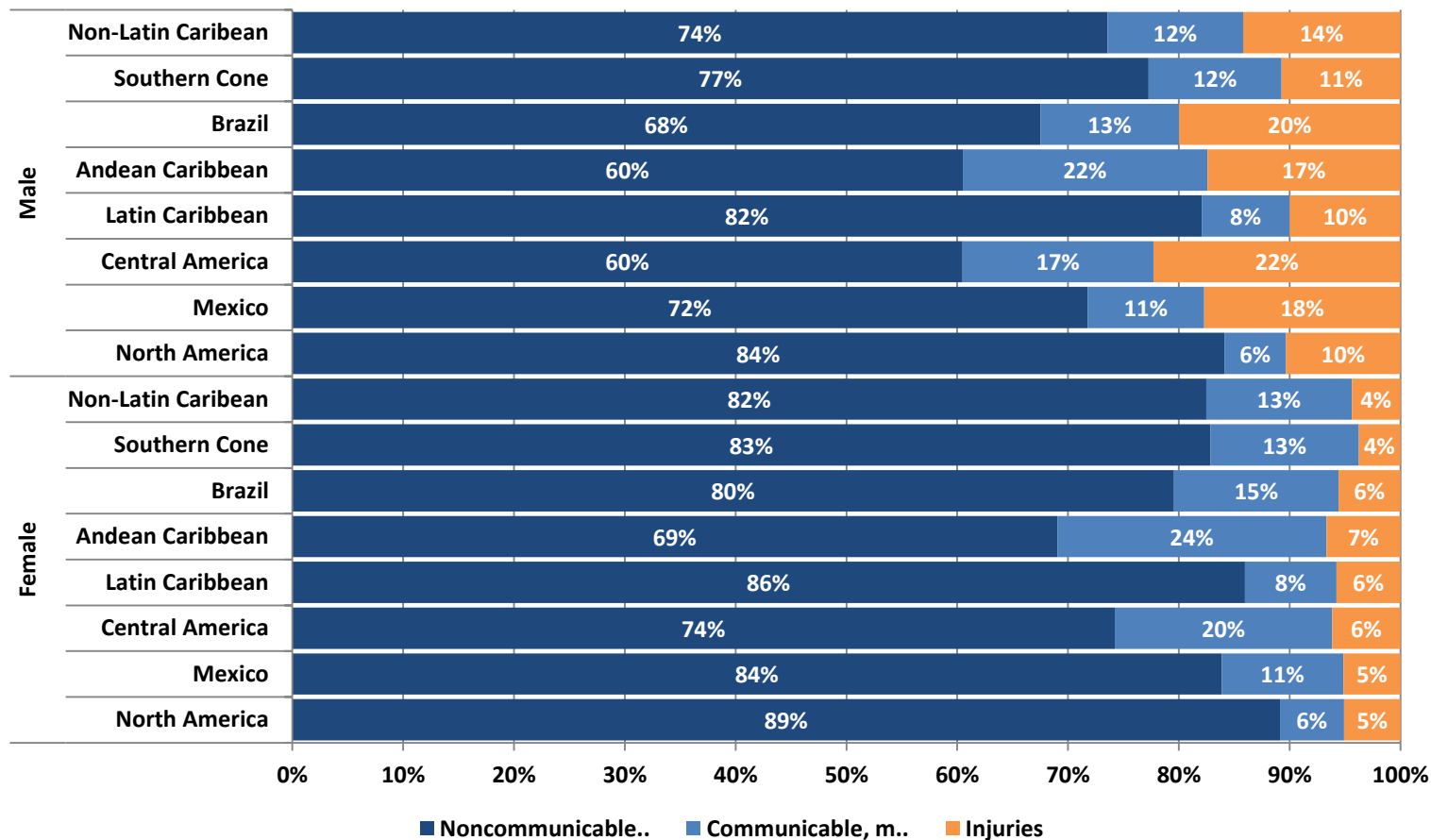
August 24, 2015

Participants: José A. Escamilla – Cejudo, Antonio Sanhueza, Carlos
Henriquez, Branka Legetic

Methods

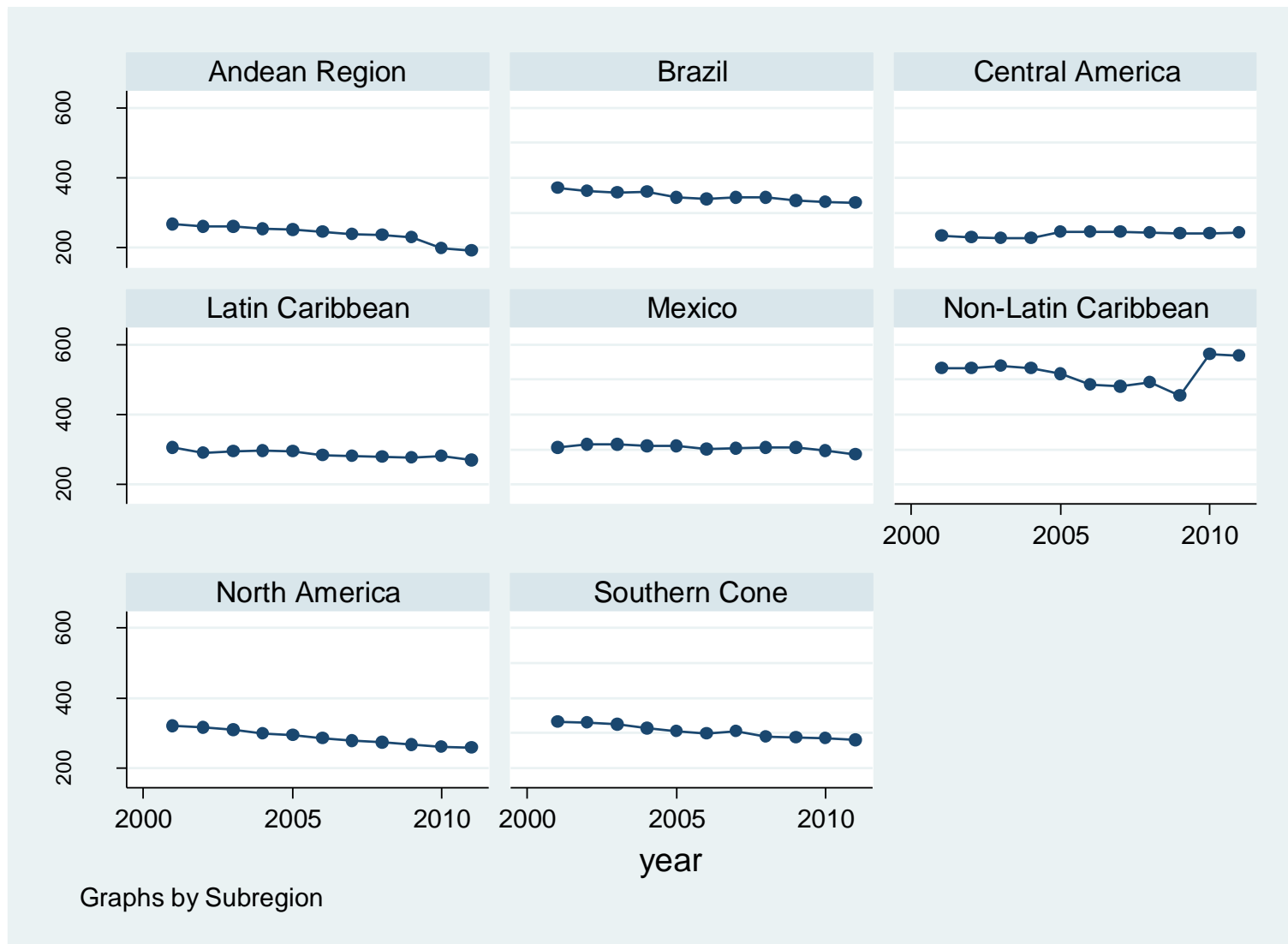
- Mortality data from 2001 – 2011 (23 countries)
 - Crude and age-adjusted rates (NCD: Cardiovascular, Cancer, Diabetes, Respiratory)
 - Proportional mortality, average % changes
 - Analysis by subregions and countries and sex
- WHO GBD selected indicators DALYS, YLL 2000-2012, region and 29 countries
- WB countries' income grouping
- Social determinants of health

Proportional mortality using the Global Burden of Disease (GBD) broad groups by subregion, Americas 2012



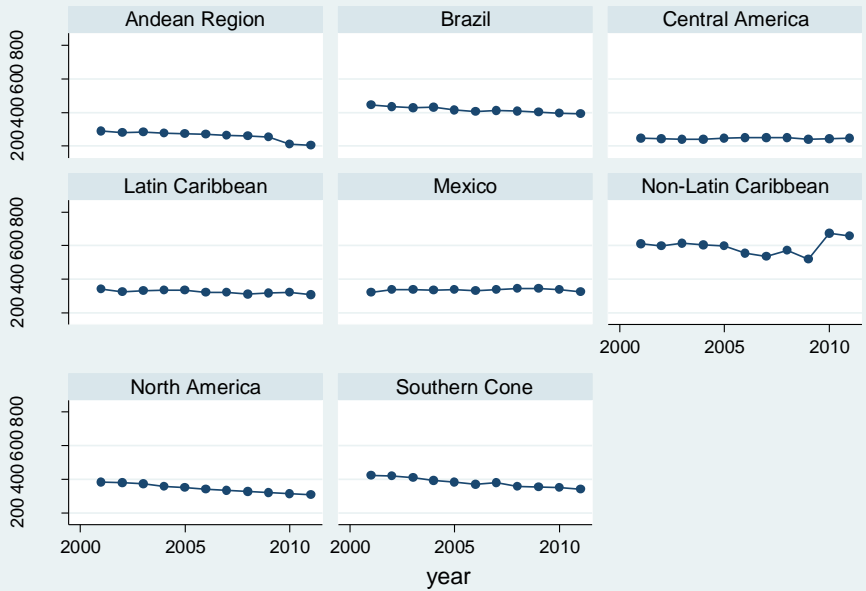
Source: PAHO/WHO Regional Mortality Information System, 2013.

Age-adjusted mortality rates from NCD by Subregion 2001 and 2011

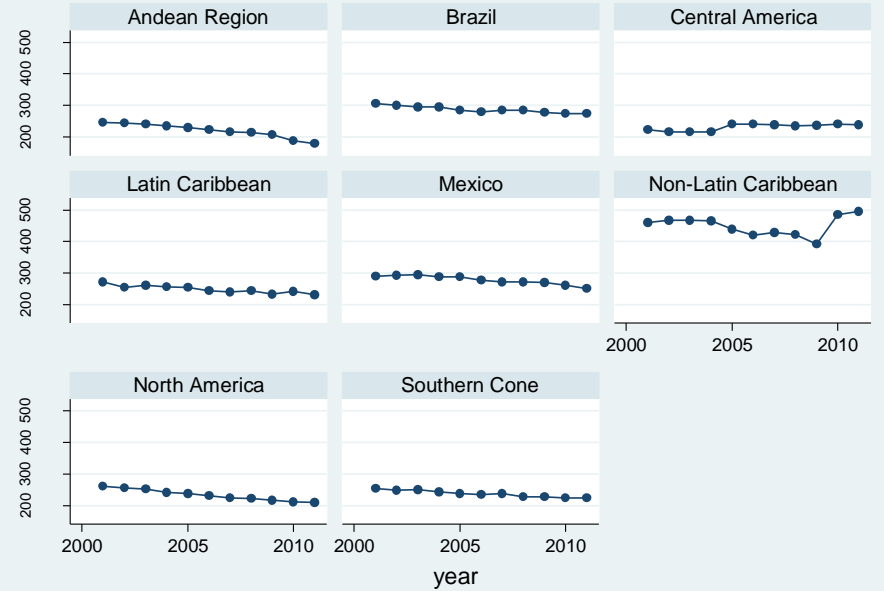


Age-adjusted mortality rates from NCD by sex

Subregion 2001 and 2011

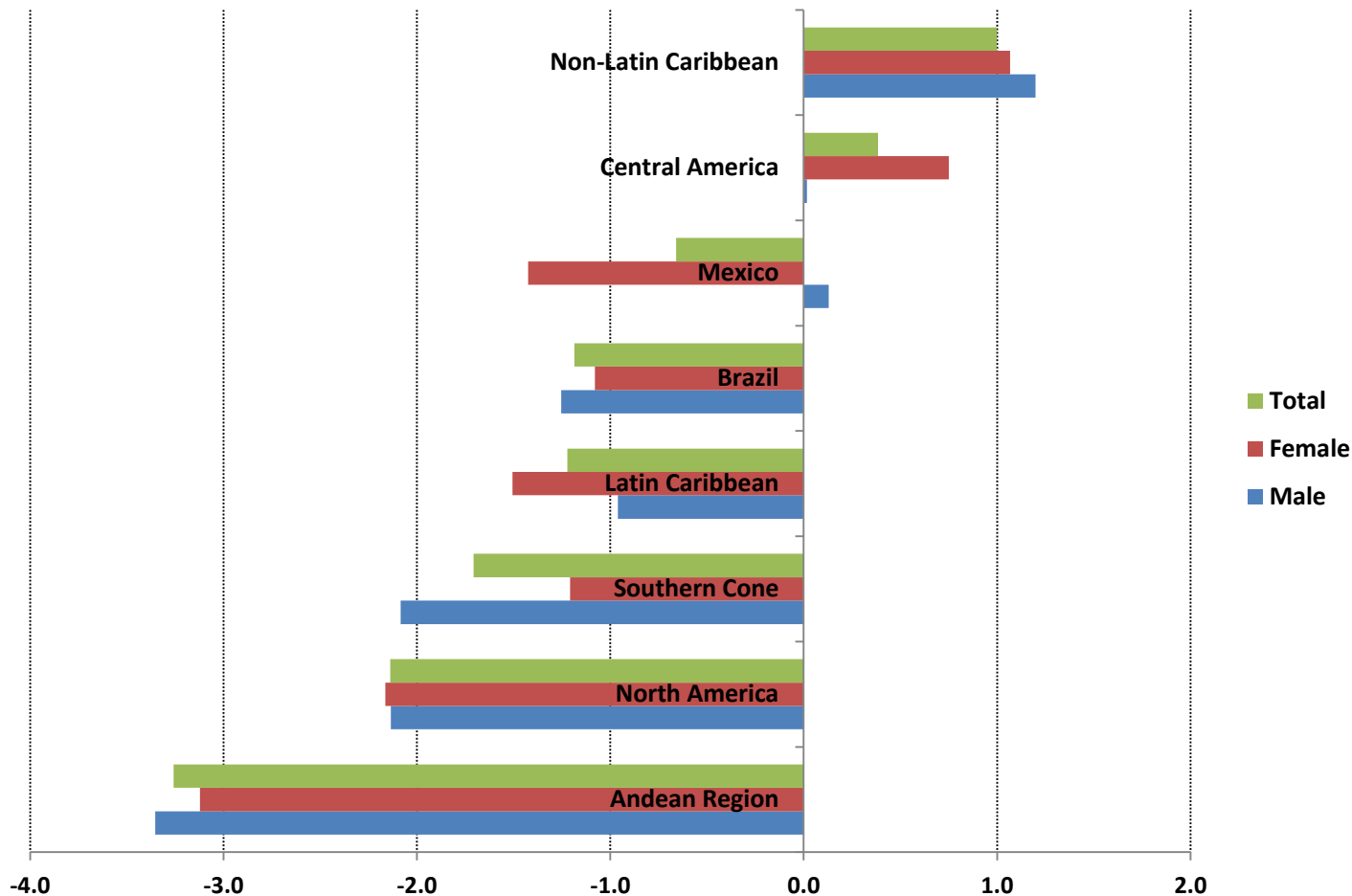


Graphs by Subregion

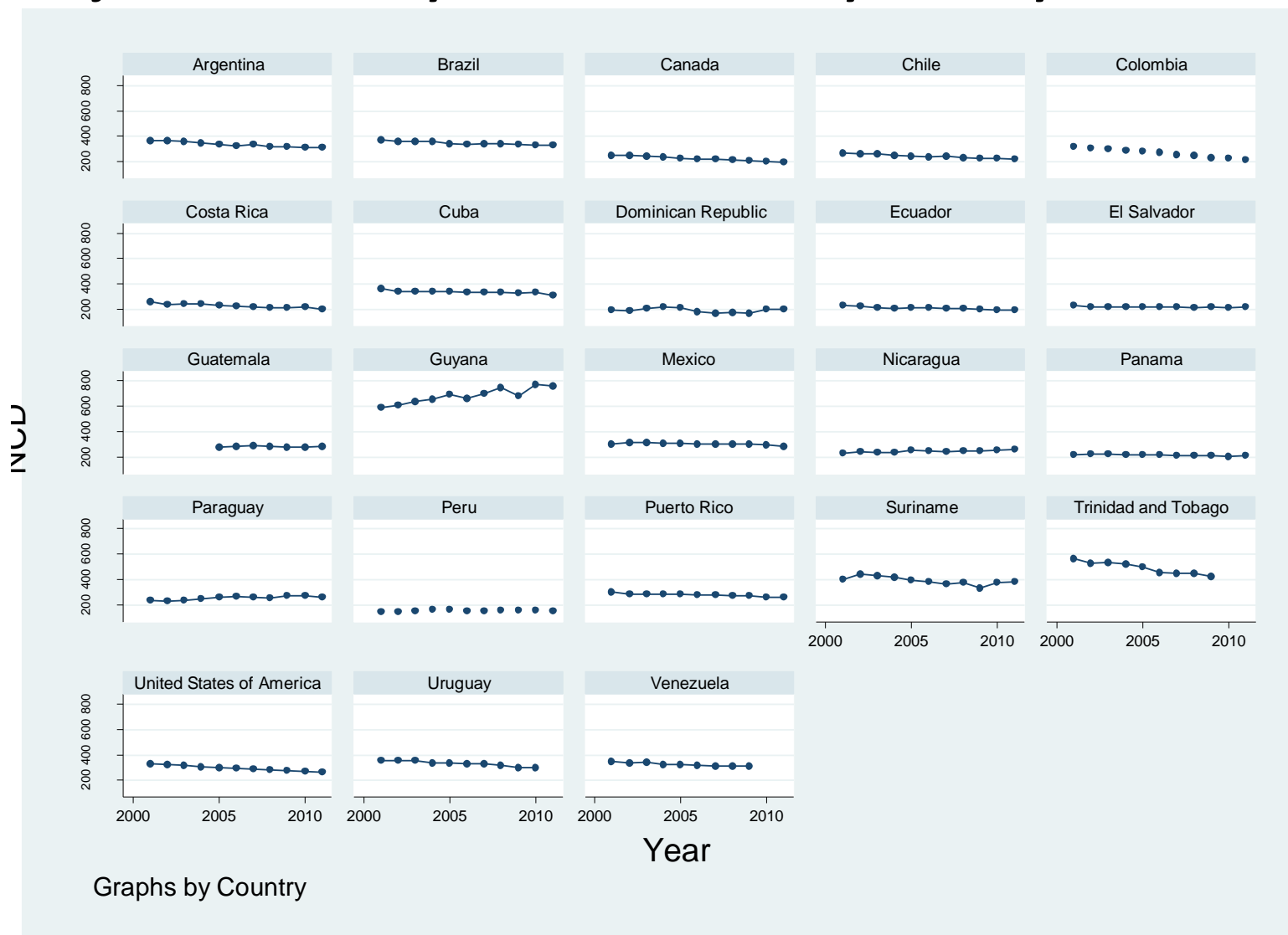


Graphs by Subregion

Percentage change (%) of mortality from NCD between 2001 and 2011 by Sex and Subregion

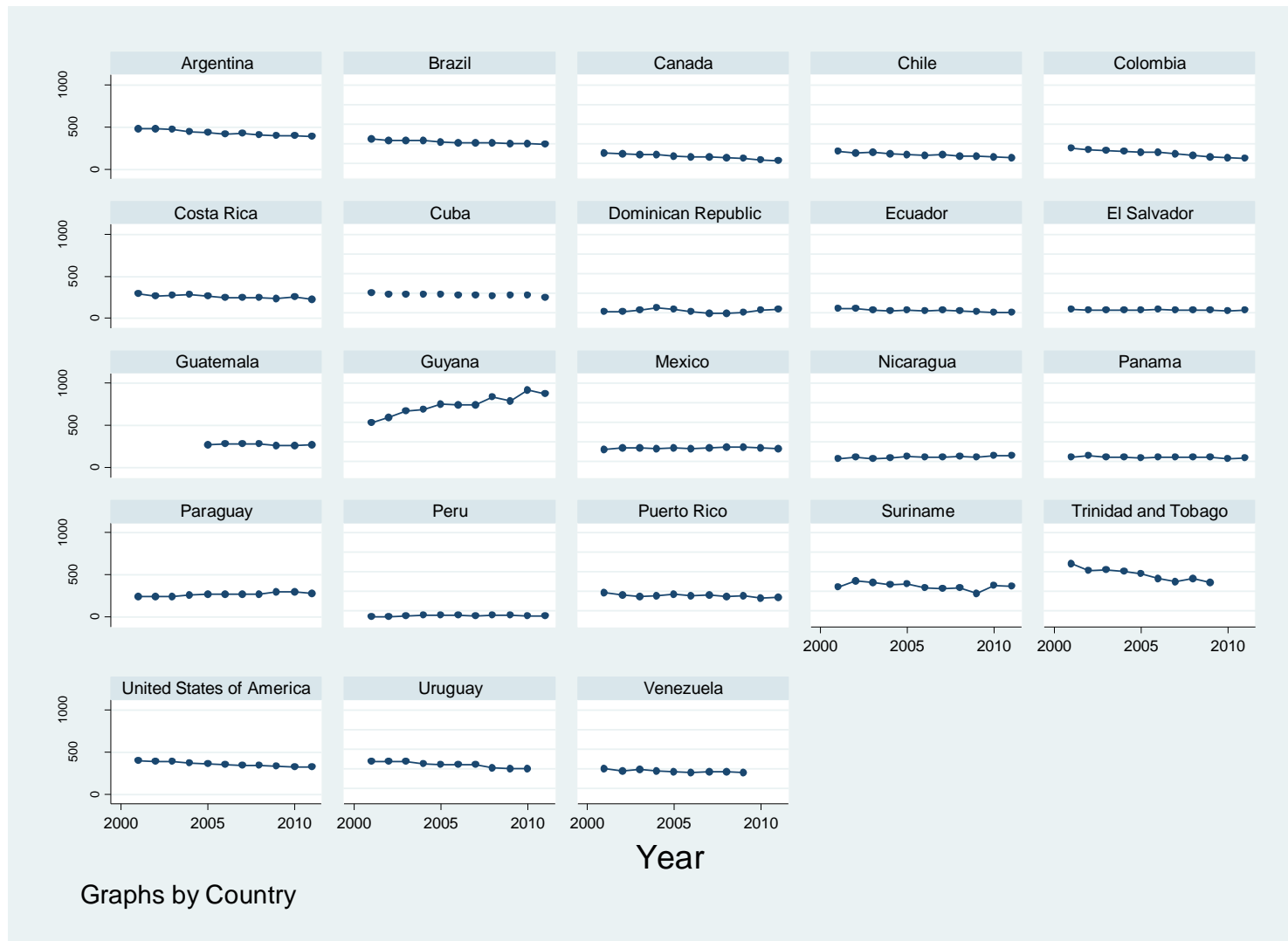


Age-adjusted mortality rates from NCD by Country 2001 and 2011

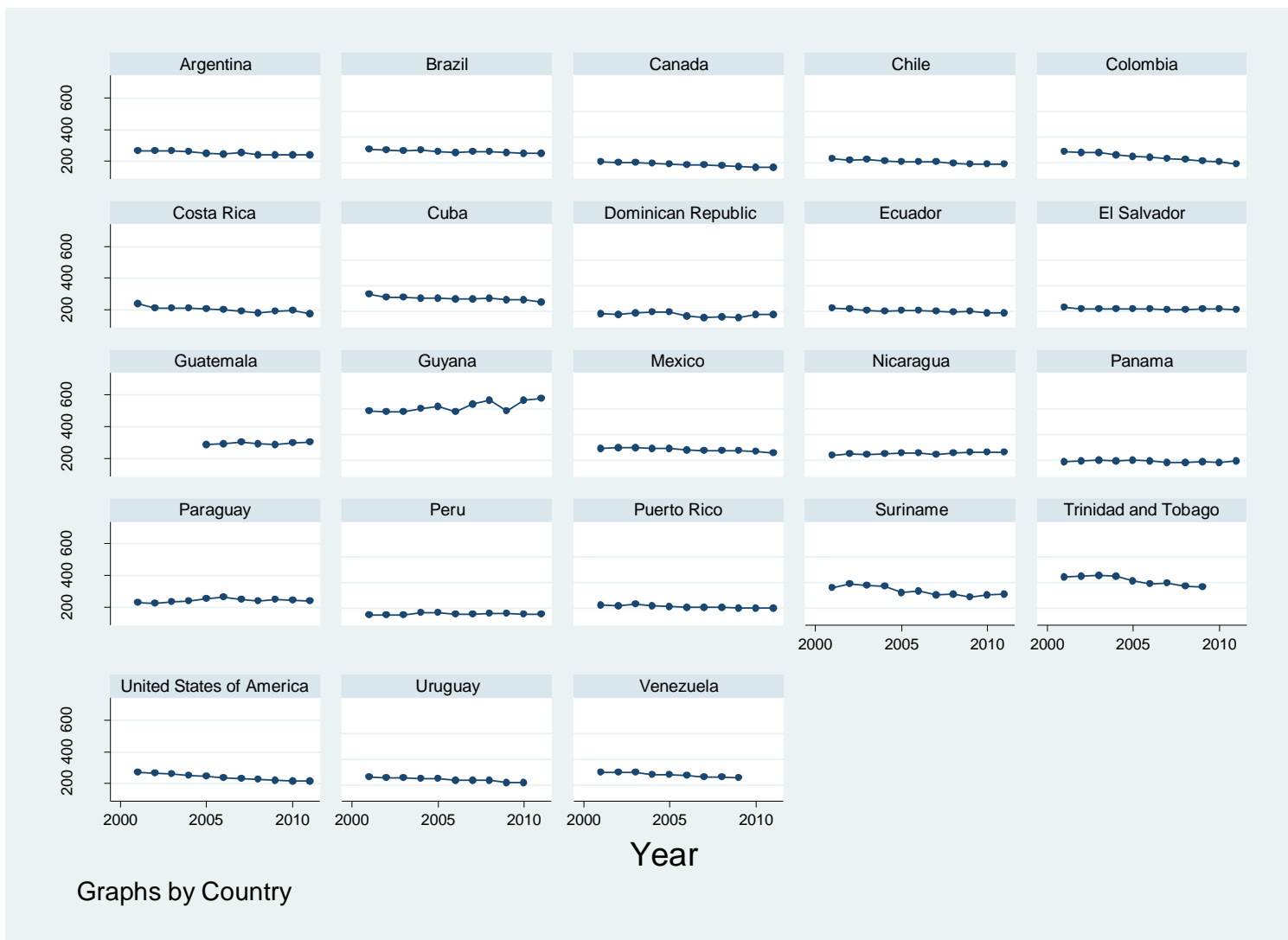


Source: PAHO/WHO Regional Mortality Information System, 2014.

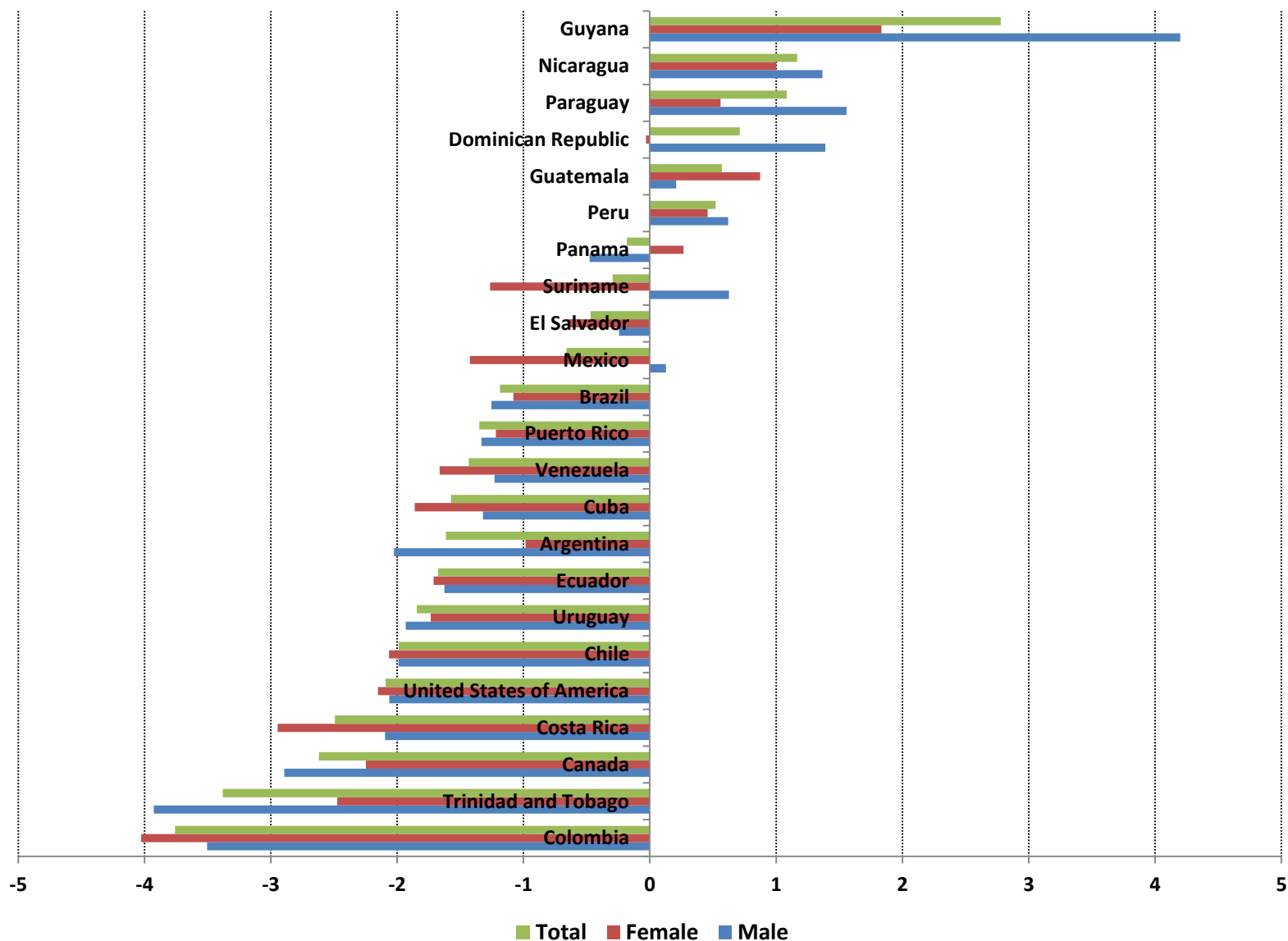
Age-adjusted mortality rates from NCD by sex (Male) Country 2001 and 2011



Age-adjusted mortality rates from NCD by sex (Female) Country 2001 and 2011

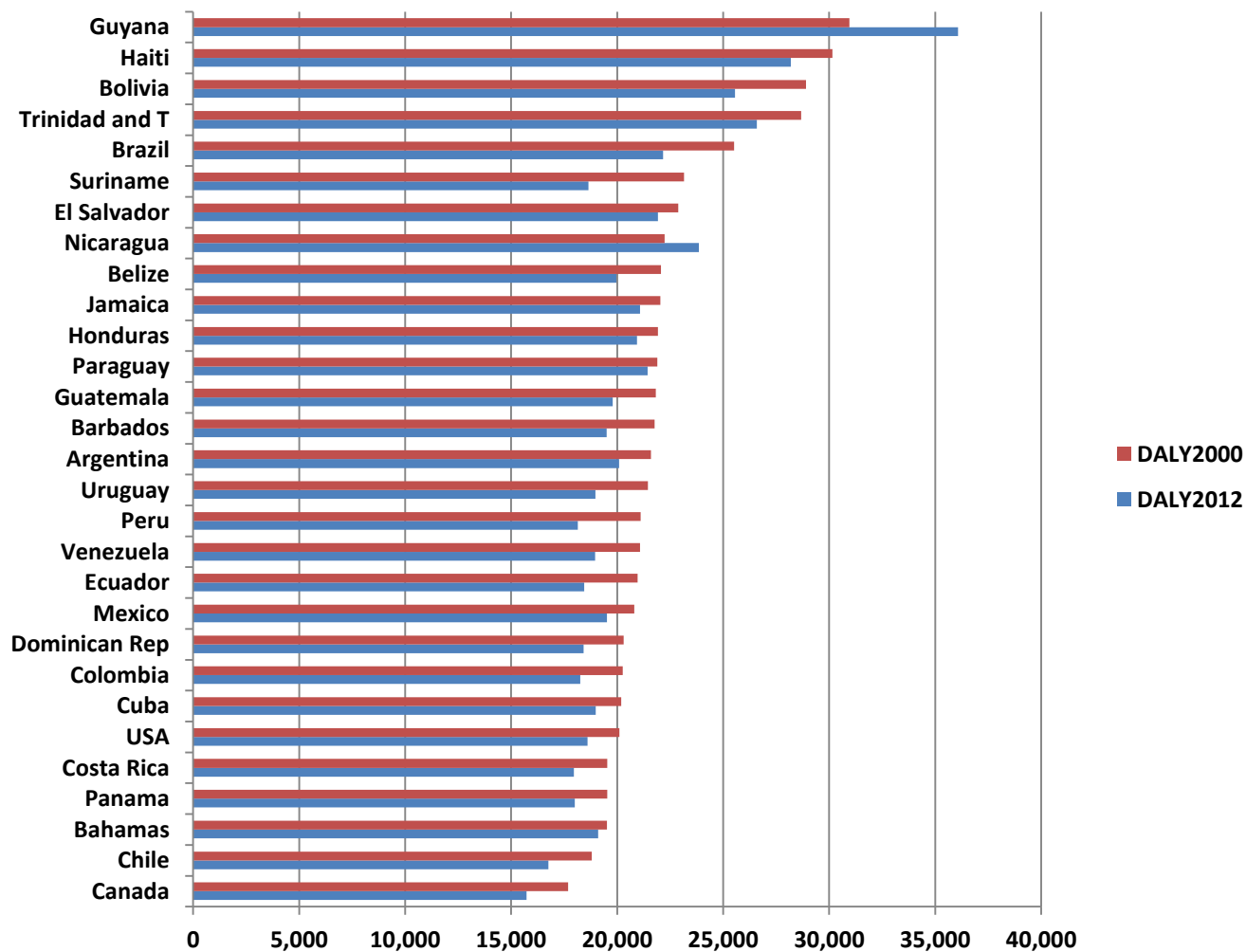


Percentage change (%) of mortality from NCD between 2001 and 2011 by Sex and Country



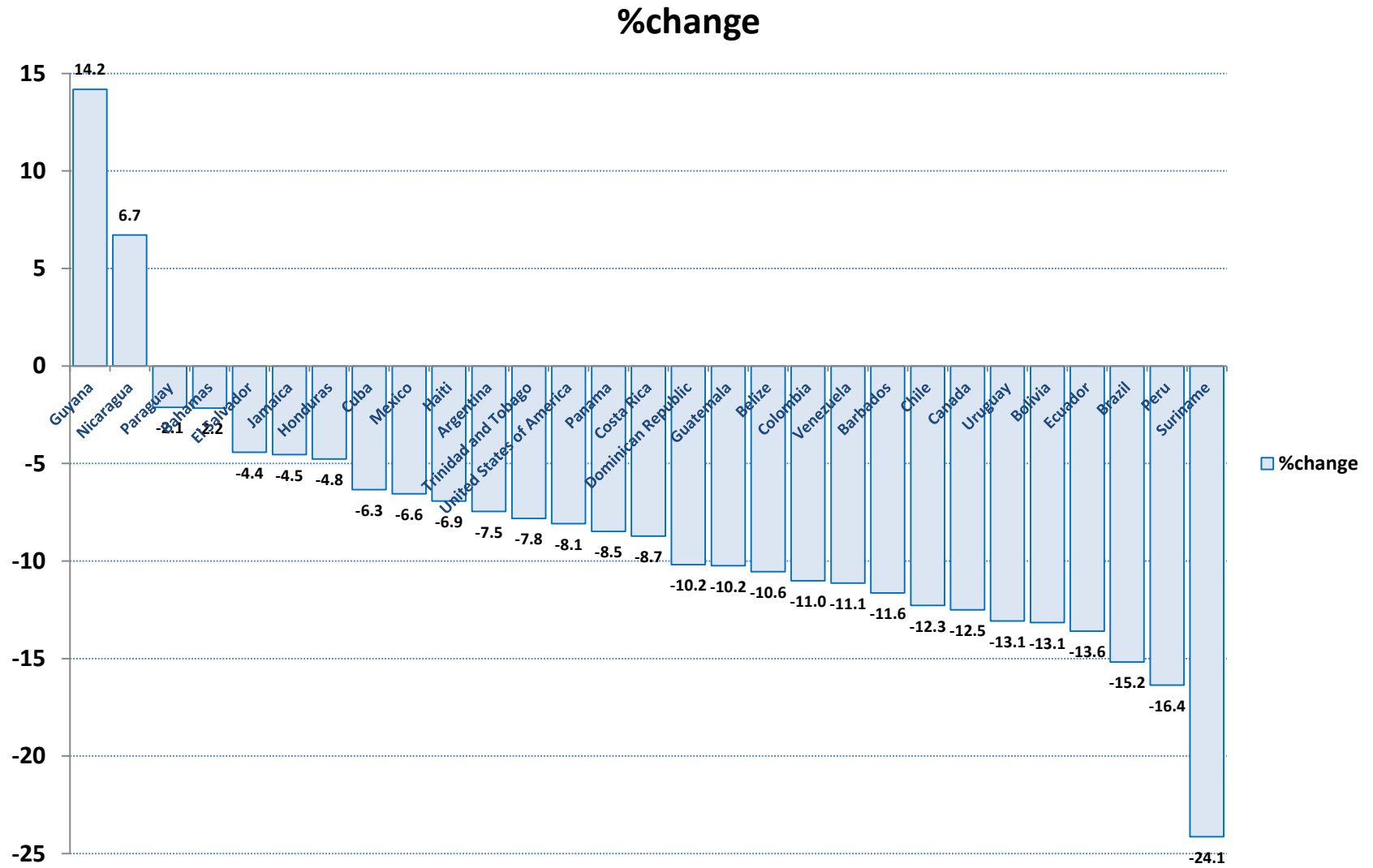
Source: PAHO/WHO Regional Mortality Information System, 2014.

Disability Adjusted Life Years* (DALY) due to NCD between 2000 and 2012 by country of the Americas



(*) Based on age-standardized DALY rates per 100,000

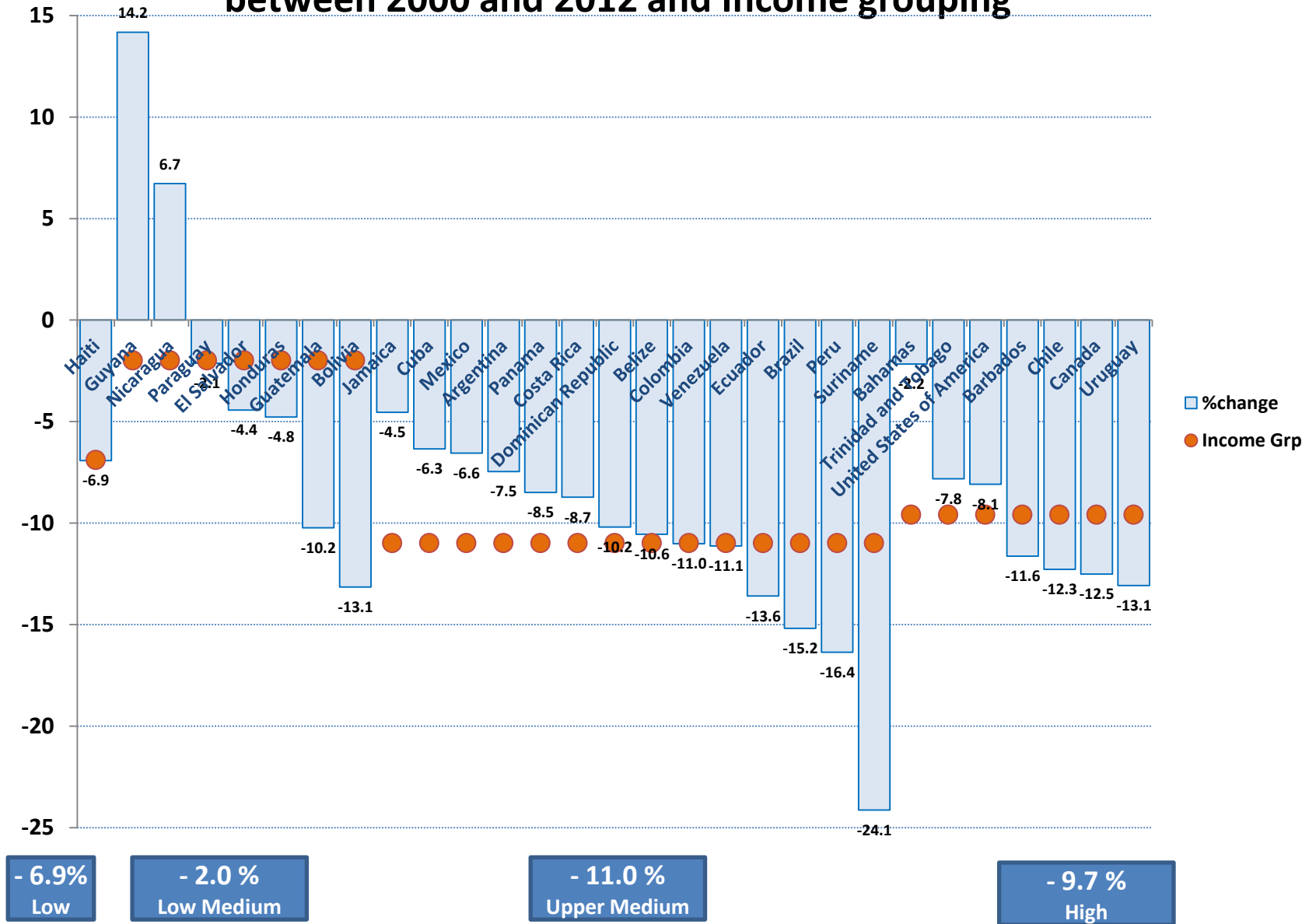
Percentage change (%) of Disability Adjusted Life Years* (DALY) due to NCD between 2000 and 2012



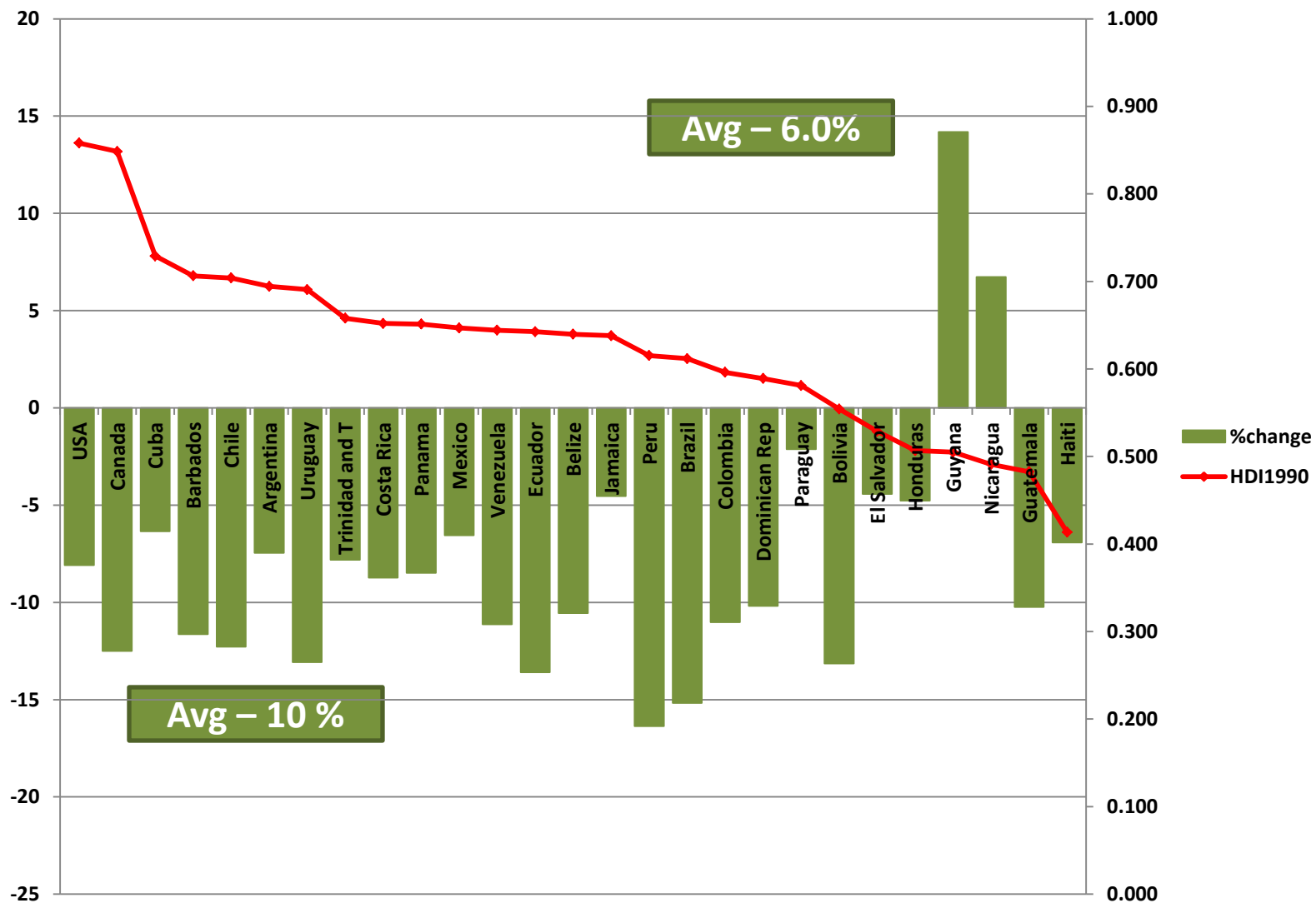
Regional change (%) in DALYs by gender between 2000 and 2012 , according to countries' income grouping

	low- and middle-income			High - Income		
	Total	Male	Female	Total	Male	Female
Communicable, maternal, perinatal and nutritional conditions	-32.8%	-32.5%	-33.3%	-3.6%	-2.9%	-4.2%
Noncommunicable diseases	13.6%	13.6%	13.5%	2.8%	4.3%	1.1%
Injuries	6.6%	7.7%	4.1%	-16.7%	-18.9%	-9.1%
All Causes	100.0%	100.0%	100.0%	100.0%	100.0%	100.0%

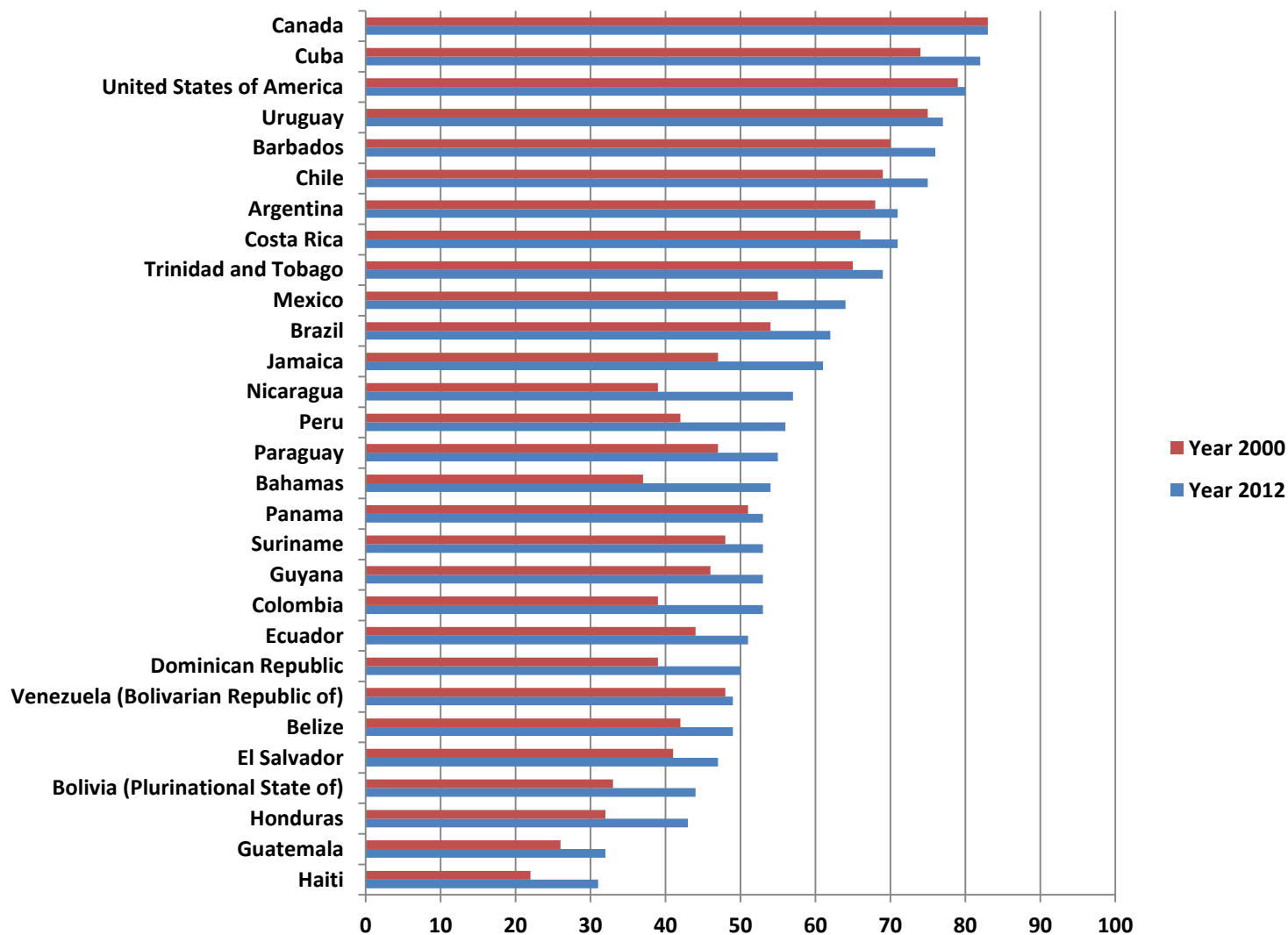
Percentage change (%) of Disability Adjusted Life Years* (DALY) due to NCD between 2000 and 2012 and Income grouping



% change of Disability Adjusted Life Years* (DALY) due to NCD between 2000 and 2012 and Human Development Index (1990) by country



Proportion of Years of Life Lost (YLL) due to NCD between 2000 and 2012 by country

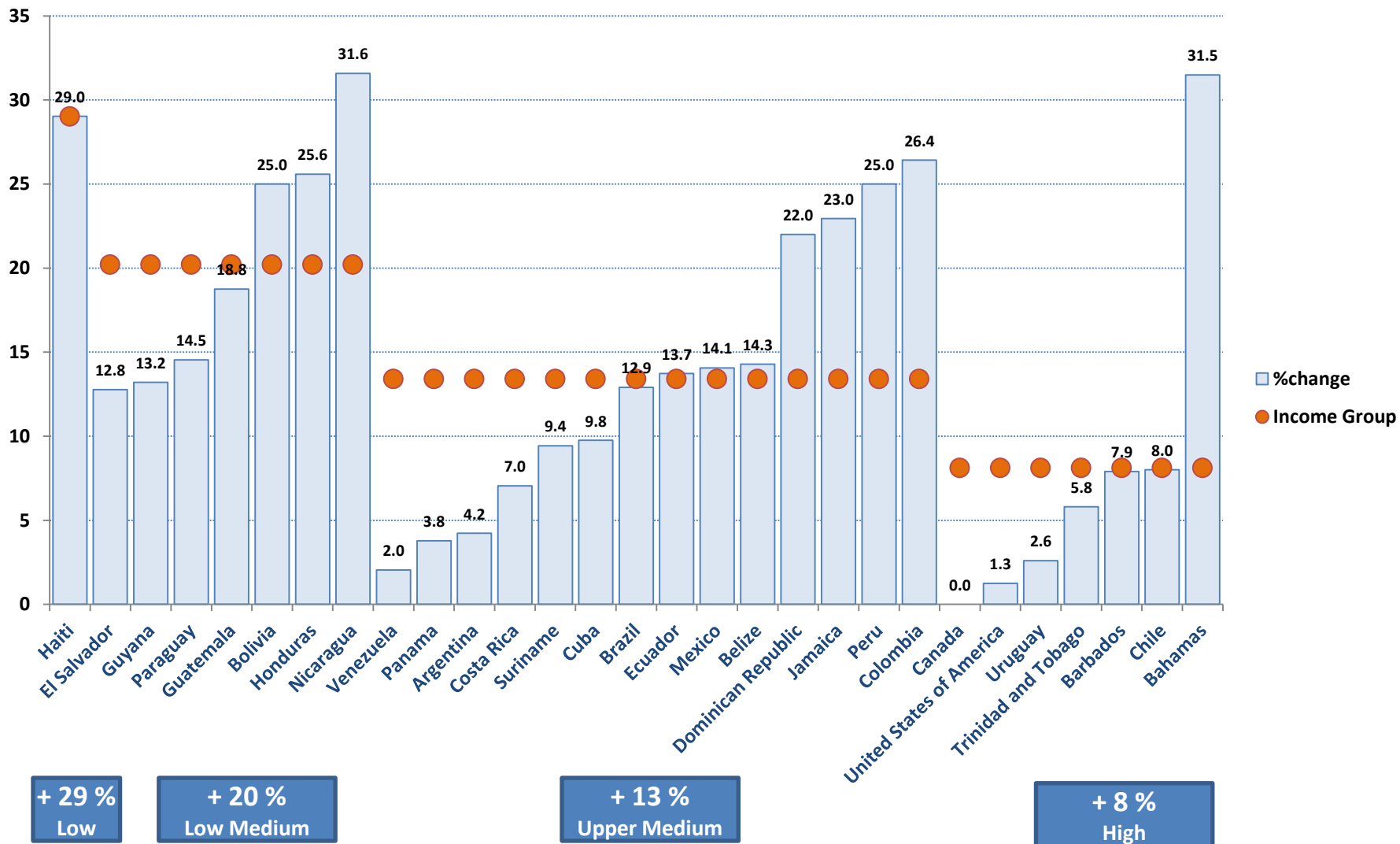


Source: WHO GBD indicators 2000 - 2012

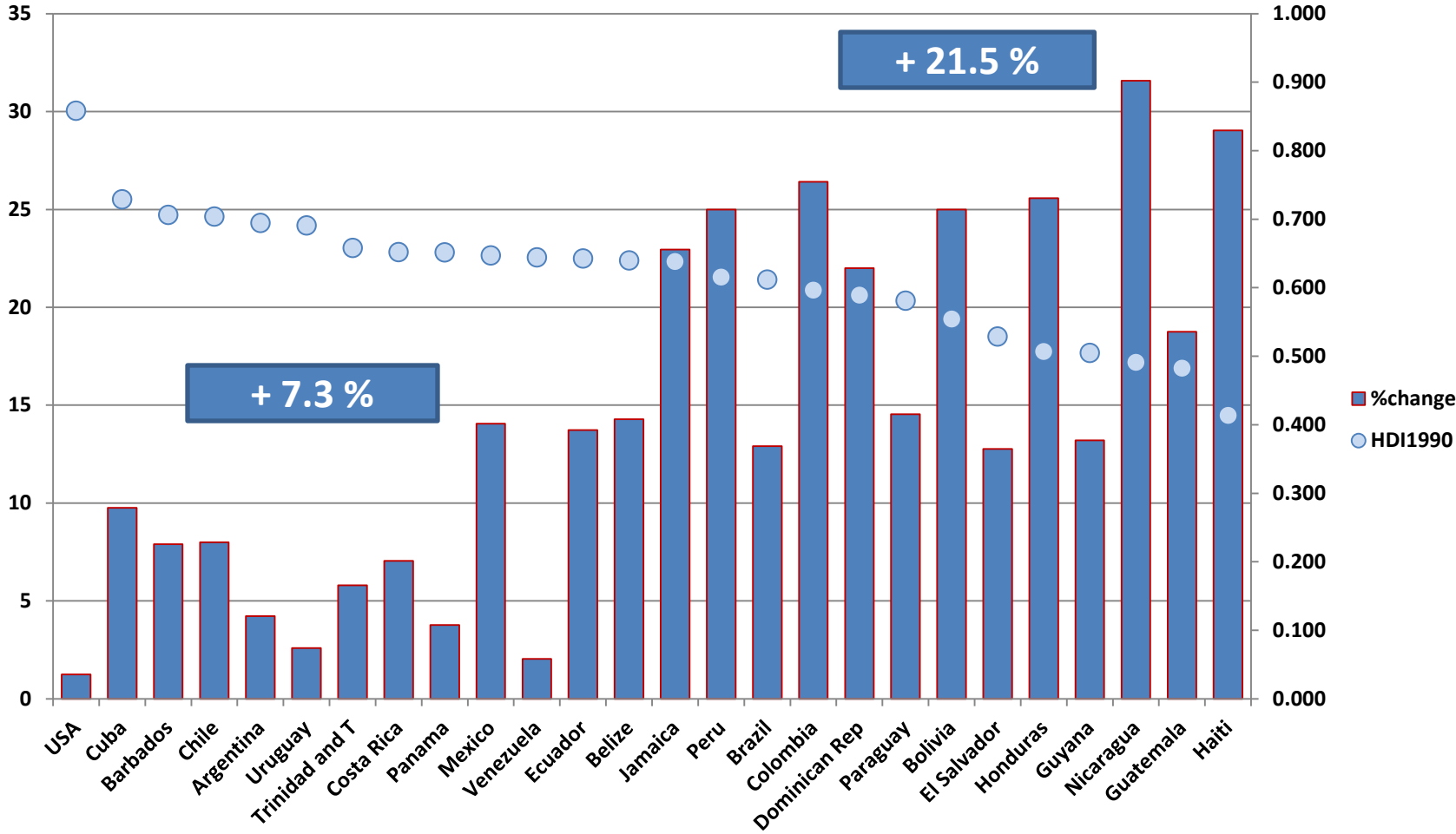
Regional change (%) in YLLs by gender between 2000 and 2012 , according to countries' income grouping

	low- and middle-income			High - Income		
	Total	Male	Female	Total	Male	Female
Communicable, maternal, perinatal and nutritional conditions	-34.7%	-35.1%	-34.0%	0.0%	0.4%	-0.5%
Noncommunicable diseases	18.8%	17.5%	20.7%	4.1%	5.9%	1.6%
Injuries	10.6%	11.0%	6.0%	-21.4%	-22.7%	-15.0%
All Causes	100.0%	100.0%	100.0%	100.0%	100.0%	100.0%

Percentage change (%) of the proportion of Years of Life Lost (YLL) due to NCD between 2000 and 2012 and Income grouping



Average change on the proportion of Years of Life Lost (YLL) due to NCD between 2000 and 2012 and Human Development Index 1990



Source: WHO GBD indicators 2000 - 2012