

Regional Update EW 43, 2014

Influenza and other respiratory viruses
(November 5, 2014)

Actualización Regional SE 43, 2014

Influenza y otros virus respiratorios
(5 de noviembre, 2014)

PAHO interactive influenza data
Datos interactivos de influenza de la OPS:

http://ais.paho.org/phis/viz/ed_flu.asp

Influenza Regional Reports:
Informes regionales de influenza:

www.paho.org/influenzareports
www.paho.org/reportesinfluenza

The information presented in this update is based on data provided by Ministries of Health and National Influenza Centers of Member States to the Pan American Health Organization (PAHO) or from updates on the Member States' Ministry of Health web pages.

La información presentada en esta actualización se obtiene a partir de los datos distribuidos por los Ministerios de Salud de los Estados Miembros y de los Centros Nacionales de Influenza de los Estados Miembros de la Organización Panamericana de la Salud (OPS) o de actualizaciones de los Ministerios de Salud de los Estados Miembros en sus páginas web.

WEEKLY SUMMARY (ENGLISH)

North America: Influenza activity remained low. In Canada, ILI activity has been above expected levels for the last nine weeks. Influenza detections have continued to increase since epidemiologic week (EW) 37 and influenza A(H3) has predominated among the circulating influenza viruses. Detections of rhinovirus increased this week after three weeks of decreasing activity. In the United States, ILI activity has been below the national baseline for the last four weeks; influenza A (not subtyped) and influenza B have predominated among the circulating influenza viruses. Other respiratory virus activity remain within expected levels and since EW 39 an increased trend in RSV detections has been recorded. From mid-August to November 5, 2014, 1,112 cases of Enterovirus D68 have been confirmed in 47 states and the District of Columbia; 39 states and the District of Columbia reported low or declining Enterovirus D68 activity and seven reported elevated activity. In Mexico, ARI activity continued within the endemic channel and the proportions of SARI/ILI consultations among all consultations remained below 2%; and there have been very few influenza detections in the last five weeks.

Caribbean: Respiratory virus activity remained low with exception of Cuba. In Cuba, SARI activity remained elevated. In Puerto Rico, ILI activity (as reported to CDC) was reported as minimal after being high and moderate in the last weeks. Influenza detections continued low and decreasing during the last three weeks. In CARPHA, SARI activity remained within expected levels with a decreasing trend in hospitalizations since EW 40 and with very few respiratory virus detections. Among respiratory viruses, RSV (Cuba, Dominican Republic) predominated.

Central America: Respiratory virus activity remained low with exception of Costa Rica and SARI/ARI activity remained within expected levels (Costa Rica, Honduras, Nicaragua). In Costa Rica, respiratory virus detections have been increased during the last five weeks with a predominance of RSV. Among respiratory virus, circulation of influenza A(H3N2) (Nicaragua) and RSV (Costa Rica, Guatemala) were observed.

Andean Sub-region: Respiratory virus activity and SARI/ARI activity remained low and within expected levels (Colombia, Ecuador, Peru, Venezuela). Among respiratory virus, circulation of parainfluenza (Ecuador) and RSV (Colombia) were observed. In Peru, there have been very few respiratory virus detections since EW 40.

Southern Cone: Respiratory virus activity and SARI/ARI activity have continued to decrease and remain within expected levels, and there have been few influenza and other respiratory virus detections (Argentina, Brazil, Chile, Paraguay, Uruguay).

Globally: As of EW 42 influenza activity was low, with the exception of some Pacific Islands. In Africa, eastern and western Asia, influenza activity was low. In tropical Asia, influenza activity continued to decrease or remained low with influenza B predominant in India and Viet Nam. In Europe overall influenza activity remained at inter-seasonal levels. In the southern hemisphere, influenza activity reached inter-seasonal levels except in several Pacific Islands where ILI activity remained high. During EW 41 and 42, National Influenza Centres (NICs) and other national influenza laboratories from 43 countries, areas or territories reported data. The WHO GISRS laboratories tested more than 31 820 specimens. 1318 were positive for influenza viruses, of which 778 (59%) were typed as influenza A and 540 (41%) as influenza B. Of the sub-typed influenza A viruses, 46 (11%) were influenza A(H1N1)pdm09 and 374 (89%) were influenza A(H3N2). Of the characterized B viruses, 28 (100%) belonged to the B-Yamagata lineage and 0 (0%) to the B-Victoria lineage.

RESUMEN SEMANAL (ESPAÑOL)

América del Norte: La actividad de influenza continúa baja. En Canadá, la actividad de ETI ha permanecido por encima de la línea basal durante las últimas nueve semanas. Las detecciones de influenza continúan aumentando desde la semana epidemiológica (SE) 37 e influenza A(H3) ha predominado entre los virus influenza circulantes. Las detecciones de rinovirus aumentaron esta semana después de tres semanas de actividad decreciente. En los Estados Unidos, la actividad de ETI ha estado por debajo de la línea basal nacional desde las últimas cuatro semanas; influenza A(no subtipificada) e influenza B han predominado entre los virus circulantes de influenza. La actividad de otros virus respiratorios se encuentra dentro de lo esperado y desde la SE 39 se observa una tendencia creciente en las detecciones de VSR. Desde mediados de agosto y al 5 de noviembre 2014, se han confirmado 1.112 casos de Enterovirus D68 en 47 estados y el Distrito de Columbia; 39 estados y el Distrito de Columbia han reportado actividad de Enterovirus D68 baja o en descenso y siete actividad elevada. En México, la actividad de IRA continúa dentro del canal endémico y entre todas las consultas, las proporciones de consultas por IRAG/ETI se mantienen por debajo del 2%, y durante las últimas cinco semanas ha habido pocas detecciones de influenza.

Caribe: La actividad de virus respiratorios continúa baja, con la excepción de Cuba. En Cuba, la actividad de IRAG continúa elevada. En Puerto Rico, la actividad de ETI (de acuerdo al CDC) se reporta como baja después de haber estado alta y moderada las semanas anteriores. Las detecciones de influenza continúan bajas y con tendencia decreciente desde las últimas tres semanas. En CARPHA, la actividad de IRAG se mantiene dentro de los niveles esperados, con una tendencia decreciente en las hospitalizaciones desde la SE 40 y con muy pocas detecciones de virus respiratorios. Entre los virus respiratorios, predomina la circulación de VSR (Cuba, República Dominicana).

América Central: La actividad de virus respiratorios continúa baja, con la excepción de Costa Rica y la actividad de IRAG/IRA continúa dentro de los niveles esperados (Costa Rica, Honduras, Nicaragua). En Costa Rica, las detecciones de virus respiratorios se han incrementado en las últimas cinco semanas con predominio de VSR. Entre los virus respiratorios, se observa la circulación de influenza A(H3N2) (Nicaragua) y VSR (Costa Rica, Guatemala).

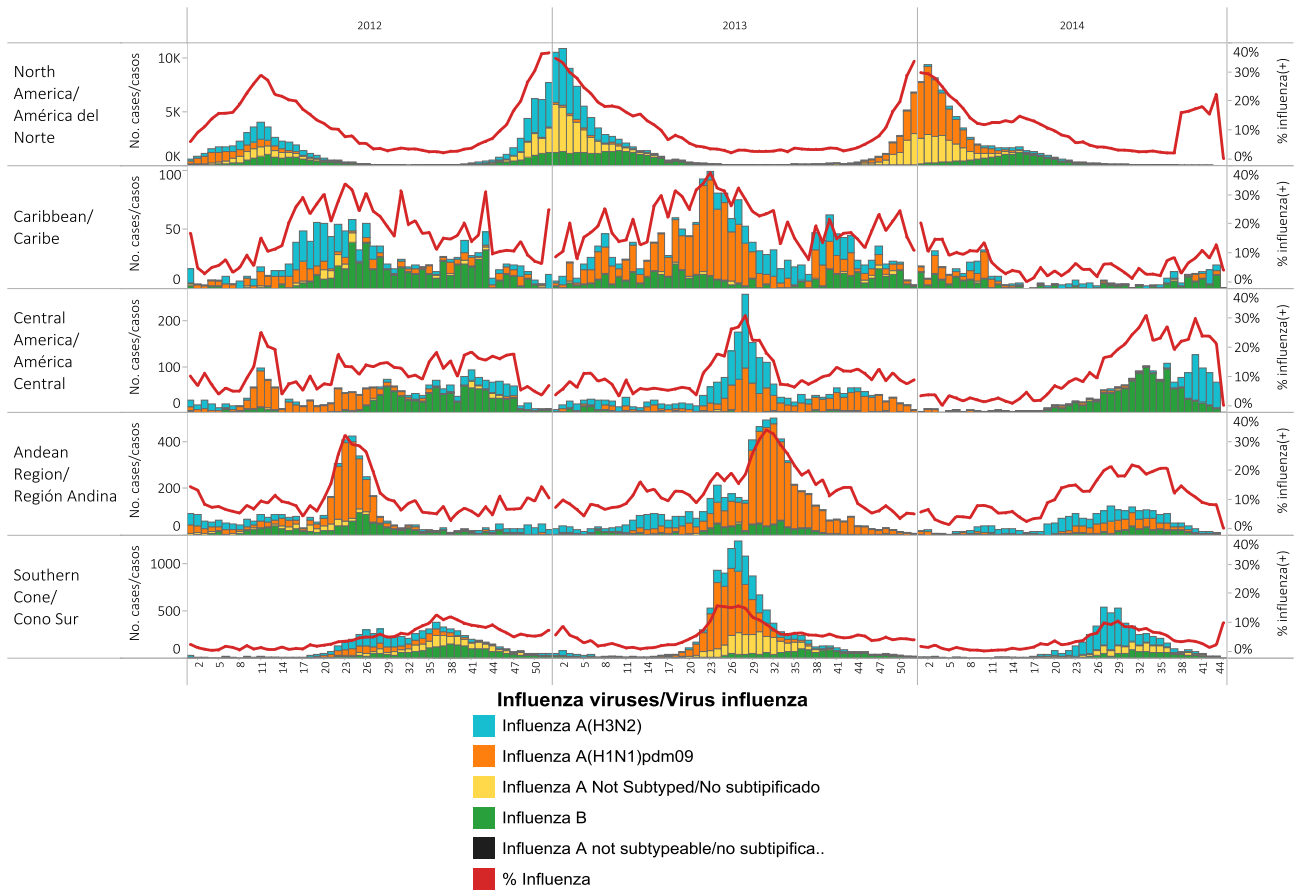
Sub-región Andina: La actividad de virus respiratorios y de IRAG/IRA continúa baja y dentro de los niveles esperados (Colombia, Ecuador, Perú, Venezuela). Entre los virus respiratorios, se observa la circulación de parainfluenza (Ecuador) y VSR (Colombia). En Perú, ha habido muy pocas detecciones de virus respiratorios desde la SE 40.

Cono Sur: La actividad de virus respiratorios y de IRAG/IRA continúa descendiendo y se mantiene dentro de los niveles esperados. Han habido pocas detecciones de influenza y otros virus respiratorios (Argentina, Brasil, Chile, Paraguay, Uruguay).

Nivel global: Durante la SE 42 la actividad de influenza fue baja, con la excepción de algunas islas del Pacífico. En África, el este y el oeste de Asia, la actividad de influenza fue baja. En Asia tropical, la actividad de influenza continúa disminuyendo o se mantiene baja, con circulación predominante de influenza B en India y Viet Nam. En Europa, en general la actividad de influenza se mantuvo en niveles inter-estacionales. En el hemisferio sur, la actividad de influenza alcanzó niveles inter-estacionales, con excepción de varias islas del Pacífico, donde la actividad de ETI continúa alta. Durante la SE 41 y 42, los Centros Nacionales de Influenza (CNI) y otros laboratorios nacionales de influenza de 43 países, zonas o territorios reportaron datos. Los laboratorios del sistema de vigilancia global de influenza y respuesta (G/SRS) de la OMS realizaron pruebas a más de 31.820 muestras. 1.318 fueron positivas a influenza, de las cuales 778 (59%) se tipificaron como influenza A y 540 (41%) como influenza B. De los virus sub-tipificados de influenza A, 46 (11%) fueron influenza A(H1N1)pdm09 y 374 (89%) influenza A(H3N2). De los virus influenza B caracterizados, 28 (100%) pertenecían al linaje B-Yamagata y 0 (0%) al linaje B-Victoria.

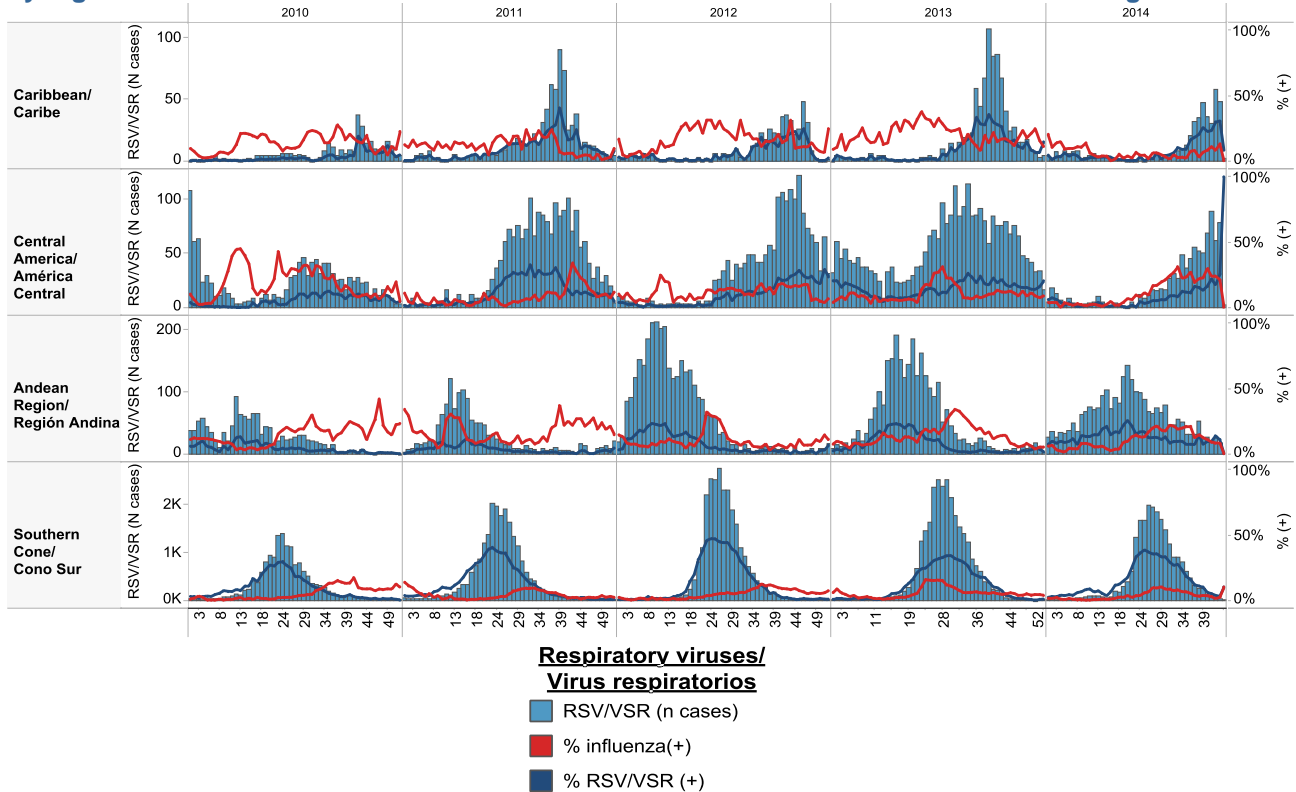
Influenza circulation by region. 2013-14

Circulación virus influenza por región. 2013-14



Respiratory syncytial virus (RSV) circulation by region. 2013-14

Circulación de virus sincitial respiratorio por región. 2013-14



ACRONYMS

ARI	Acute respiratory infection
CARPHA	Caribbean Public Health Agency
CENETROP	Centro de Enfermedades Tropicales (Santa Cruz, Bolivia)
EW	Epidemiological Week
ILI	Influenza-like illness
INLASA	Instituto Nacional de Laboratorios de Salud (La Paz, Bolivia)
INS	Instituto Nacional de Salud
ORV	Other respiratory viruses
SARI	Severe acute respiratory infection
SEDES	Servicio Departamental de Salud (Bolivia)
ICU	Intensive Care Unit
RSV	Respiratory Syncytial Virus

ACRÓNIMOS

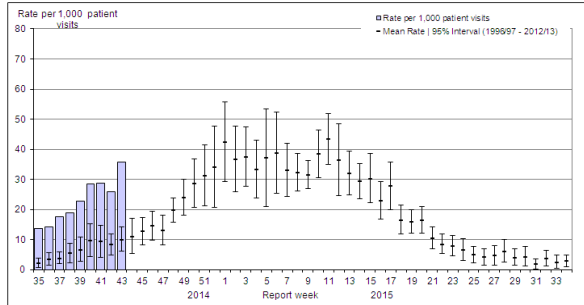
CARPHA	Caribbean Public Health Agency
CENETROP	Centro de Enfermedades Tropicales (Santa Cruz, Bolivia)
ETI	Enfermedad tipo influenza
INLASA	Instituto Nacional de Laboratorios de Salud (La Paz, Bolivia)
INS	Instituto Nacional de Salud
IRA	Infección respiratoria aguda
IRAG	Infección respiratoria aguda grave
OVR	Otros virus respiratorios
SE	Semana epidemiológica
SEDES	Servicio Departamental de Salud (Bolivia)
UCI	Unidad de Cuidados Intensivos
VSR	Virus sincitial respiratorio

North America/América del Norte:

Canada

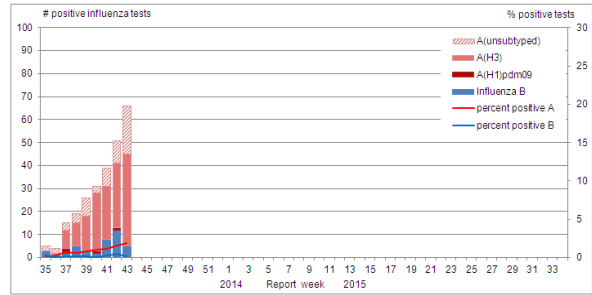
Canada: ILI Consultation Rates, by EW, 2014-15
Tasa de consultas de ETI, por SE, 2014-15

Figure 5. Influenza-like-illness (ILI) consultation rates by report week, compared to the 1996-97 through to 2012-13 seasons (with pandemic data suppressed), Canada, 2014-2015



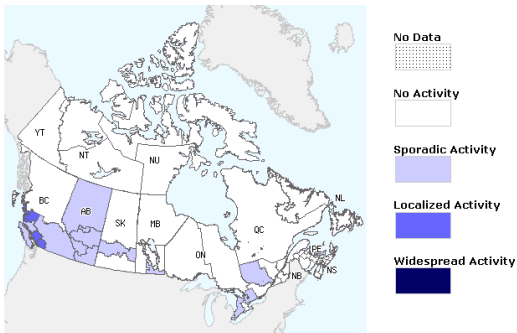
Canada: Influenza virus distribution by EW, 2014-15
Distribución de virus de influenza por SE, 2014 -15

Figure 2. Number of positive influenza tests and percentage of tests positive, by type, subtype and report week, Canada, 2014-15



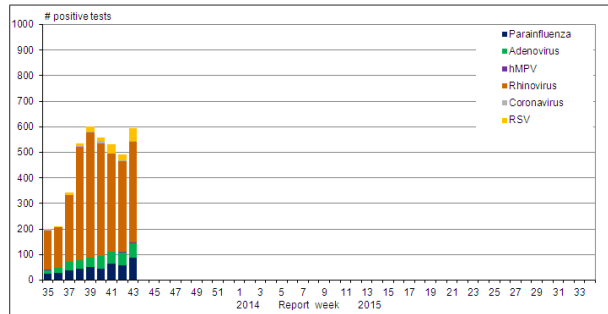
Canada: Influenza/ILI Activity by region, EW 43, 2014
Actividad de Influenza/ETI por provincia & territorio, SE 43, 2014

Figure 1. Map of overall influenza/ILI activity level by province and territory, Canada, Week 43



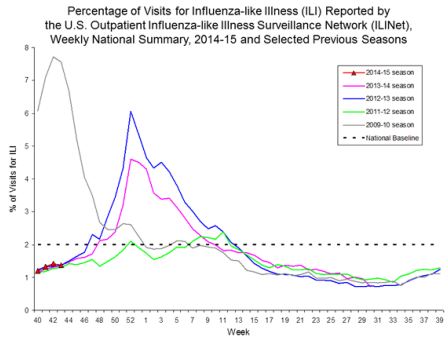
Canada: Other respiratory virus distribution by EW, 2014-15
Distribución de virus respiratorios por SE, 2014 -15

Figure 3. Number of positive laboratory tests for other respiratory viruses by report week, Canada, 2014-15

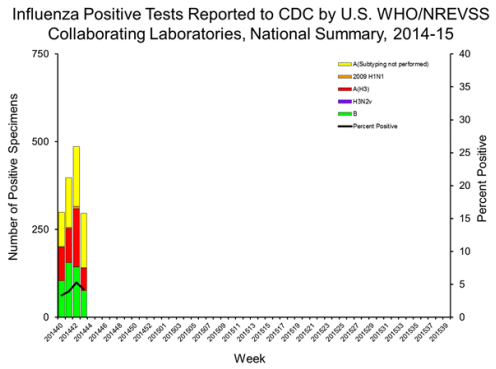


United States

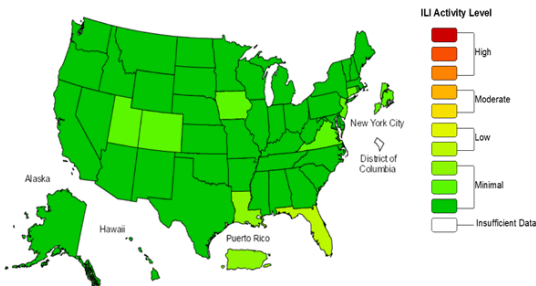
US: Percent of ILI visits by EW, 2014-15
Porcentaje de consultas ETI por SE, 2014-15



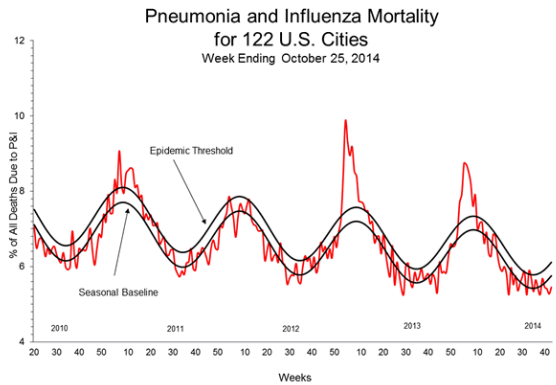
US: Influenza virus distribution by EW, 2014-15
Distribución de virus de influenza por SE, 2014-15



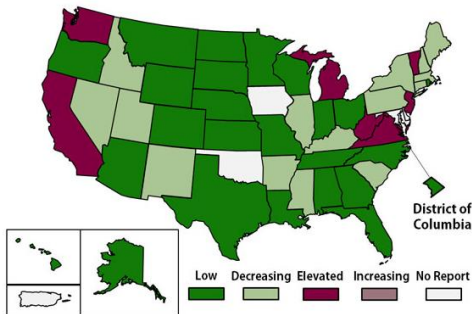
US: ILI activity by state, EW 43, 2014
Actividad ETI por estado, SE 43, 2014
Influenza-Like Illness (ILI) Activity Level Indicator Determined by Data Reported to ILINet
2014-15 Influenza Season Week 43 ending Oct 25, 2014



US: Pneumonia and influenza mortality
Mortalidad por neumonía e influenza



US: Activity of Enterovirus D68-like illness by state
Actividad de enfermedad tipo Enterovirus D68 por estado



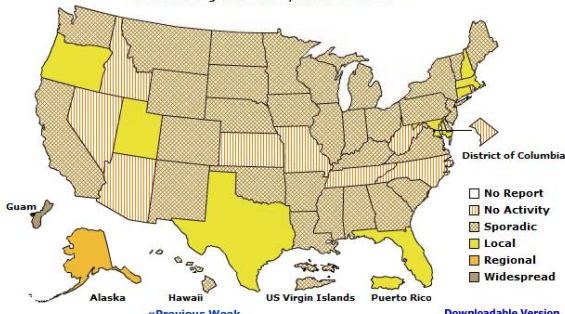
For the week of October 19-25, 2014, 46 states and the District of Columbia have submitted assessments to CDC of activity of EV-D68-like illness.

Para la semana del 19-25 de octubre 2014, 46 estados y el distrito de Columbia enviaron al CDC su evaluación de actividad de enfermedad tipo EV-D68.

- 39 states and the District of Columbia reported low or declining activity / 39 estados y el Distrito de Columbia reportaron actividad baja o en descenso
- 7 states reported elevated activity / 7 estados reportaron actividad elevada

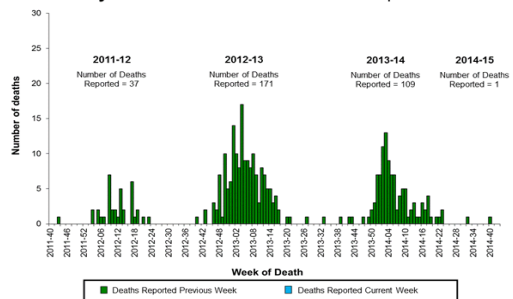
US: Weekly influenza activity reported by State and Territory
Actividad semanal de influenza reportado por estado y territorio

A Weekly Influenza Surveillance Report Prepared by the Influenza Division
Weekly Influenza Activity Estimates Reported by State and Territorial Epidemiologists*



US: Number of influenza-associated pediatric deaths by week: 2011 to present
Número de fallecidos pediátricos asociados a influenza por semana: 2011 al presente

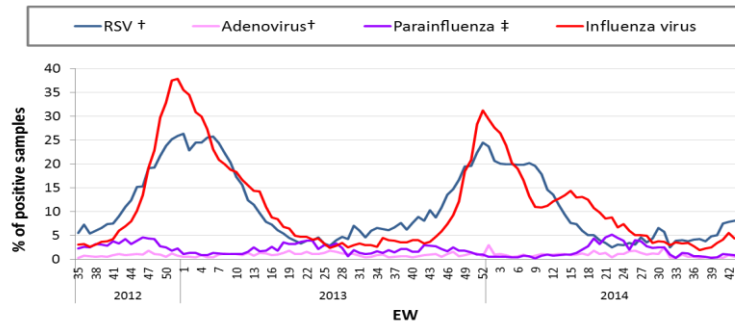
Number of Influenza-Associated Pediatric Deaths by Week of Death: 2011-12 season to present



United States

US: Percent positivity for respiratory virus under surveillance, by EW, 2012-14
 Porcentaje de positividad para virus respiratorios en vigilancia, por SE, 2012-14

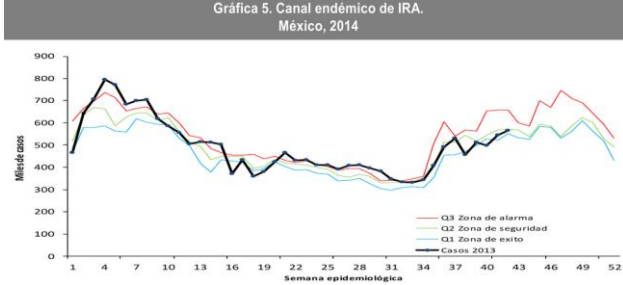
**Percent Positivity for Respiratory Viruses Under Surveillance*—
 United States, 2012/2013 - 2014/2015**



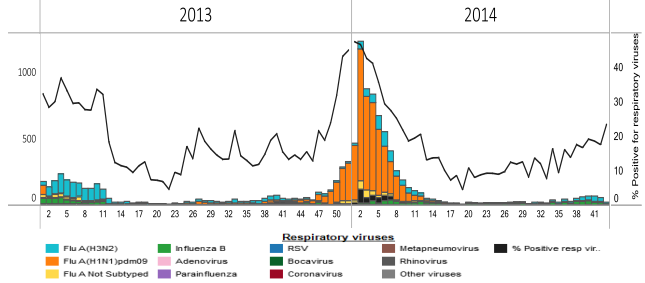
*For adenovirus, parainfluenza 1,2,3, and RSV, data are from NREVSS Laboratories (<http://www.cdc.gov/surveillance/nrevss/>); for influenza, data are from U.S. WHO/NREVSS Collaborating Laboratories (<http://www.cdc.gov/flu/weekly/>)
 †Antigen detection is reported
 ‡ Percent positive of Parainfluenza aggregates the % of positive samples from parainfluenza type 1, type 2 and type 3. Assuming that each samples were tested for the 3 sub-types.

Mexico

Mexico: ARI Endemic Channel, 2014
 Canal Endémico de IRA, 2014



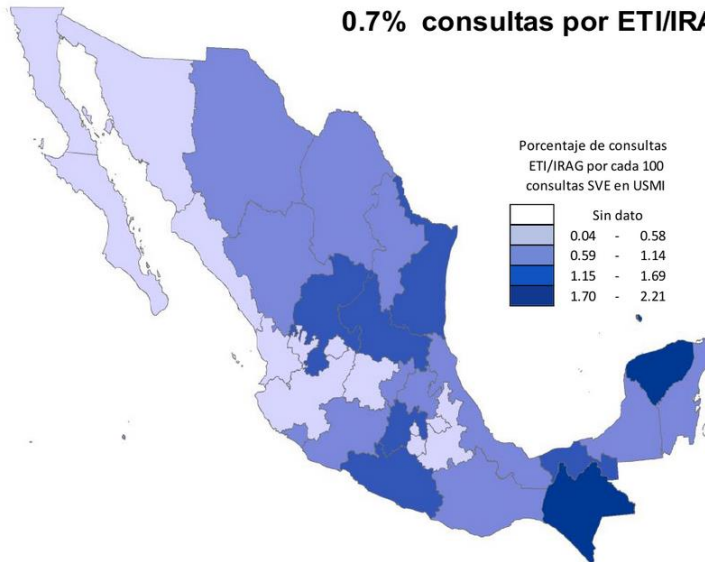
Mexico: Respiratory virus distribution by EW 2013-14
 Distribución de virus respiratorios por SE, 2013-14



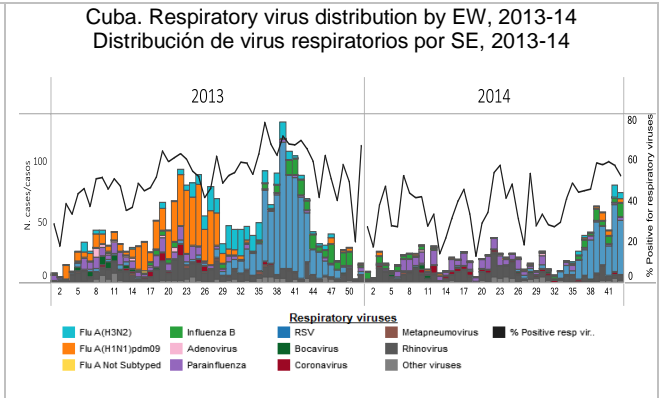
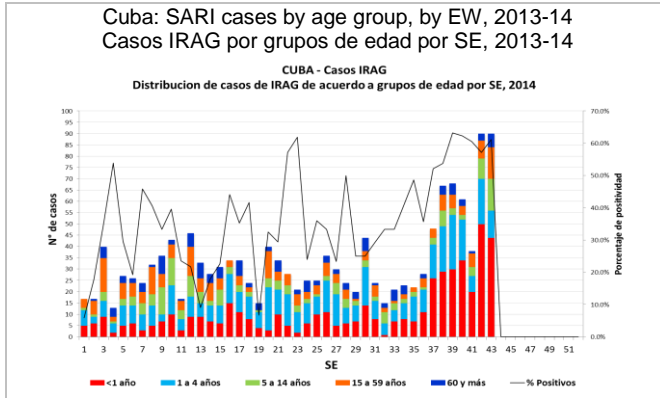
Mexico: Proportion of ILI/SARI visits, EW 44, 2014
 Proporción de consultas por ETI/IRAG, SE44, 2014

Figura 1. Proporción de consultas por ETI/IRAG en USMI según entidad federativa. México, 2014

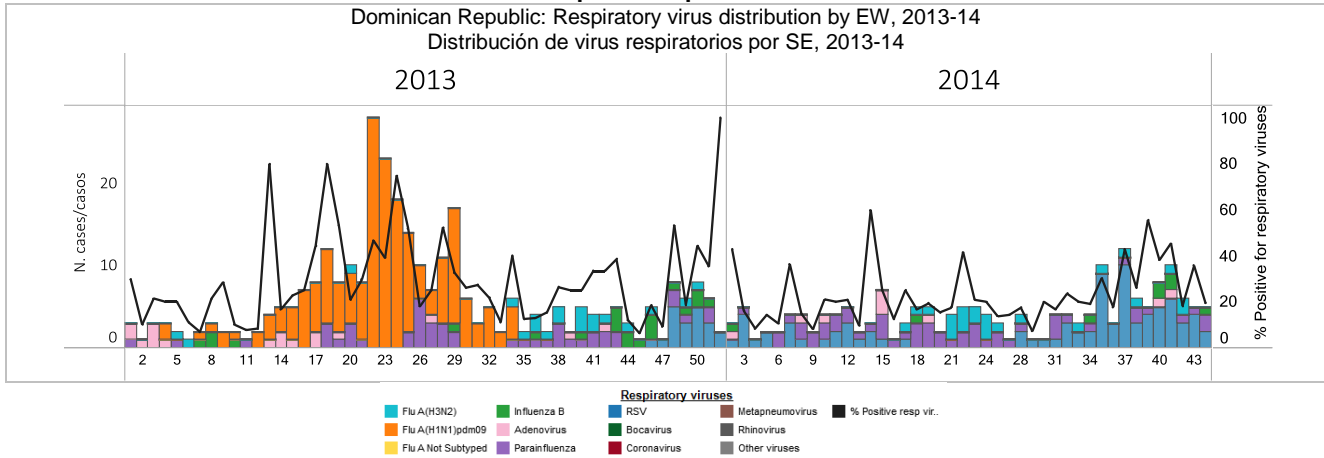
0.7% consultas por ETI/IRAG en USMI



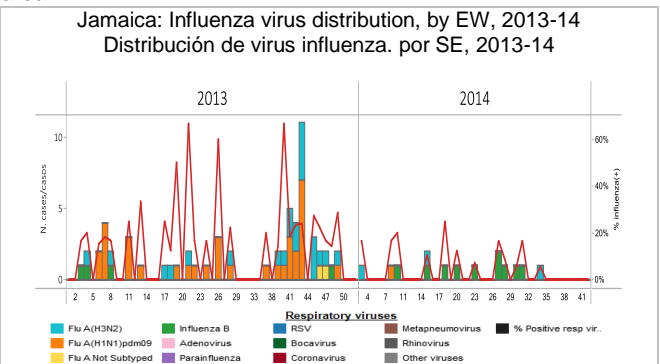
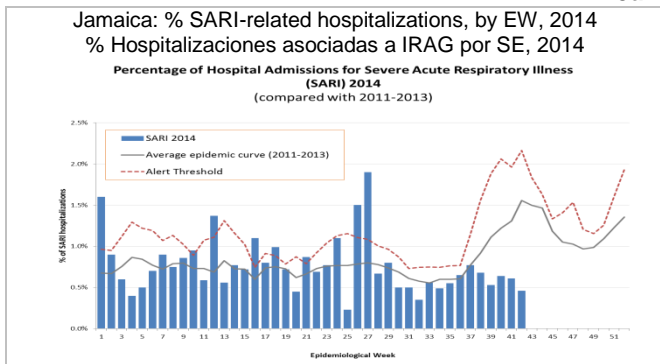
Cuba



Dominican Republic/República Dominicana



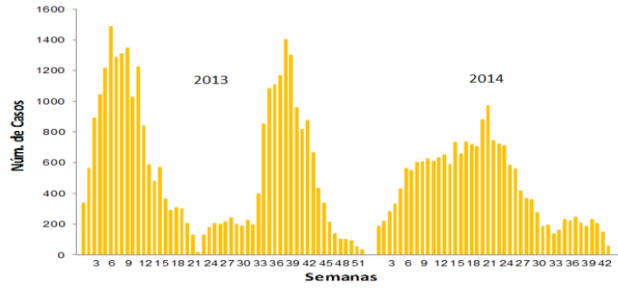
Jamaica



Puerto Rico

Puerto Rico: Influenza-positive cases by EW, 2013-14
Casos positivos a influenza por SE, 2013-14

GRÁFICA 1. Número de Casos Positivos a Influenza por Semanas, Puerto Rico 2013-2014

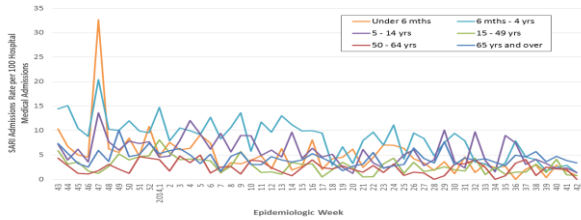


Datos actualizados hasta el 25 de octubre de 2014
 N (año 2013) = 32,162
 N (año 2014) = 19,418

CARPHA

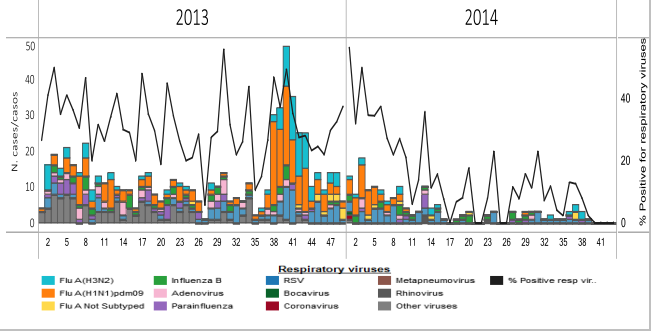
CARPHA: SARI hospitalizations per 100 medical admissions by age group, EW 43, 2013 – EW 42, 2014
Hospitalizaciones IRAG por 100 ingresos médicos por grupo de edad, SE 43, 2013 – SE 42, 2014

SARI Admissions Rate per 100 Hospital Medical Admissions by Age Group from Sentinel Sites in Select CARPHA Member States*
 EW 43, 2013 - EW 42, 2014



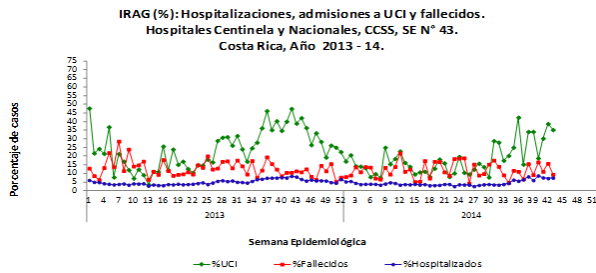
* Note: Graph includes data from Barbados, Belize, Dominica, Jamaica, St. Lucia, St. Vincent/Grenadines, Suriname and Trinidad/Tobago.

CARPHA: Respiratory virus distribution by EW, 2014
Distribución de virus respiratorios por SE, 2014

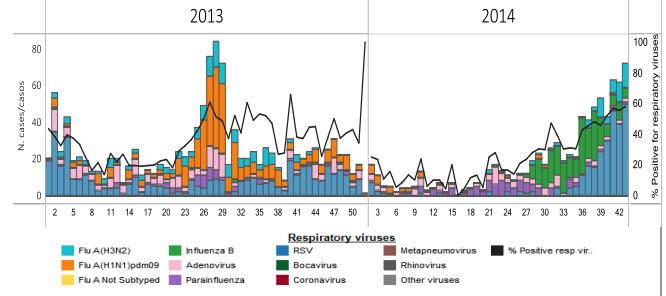


Costa Rica

Costa Rica: Proportion of SARI-Associated Hospitalizations, ICU Admissions and Deaths, by EW, 2013-14

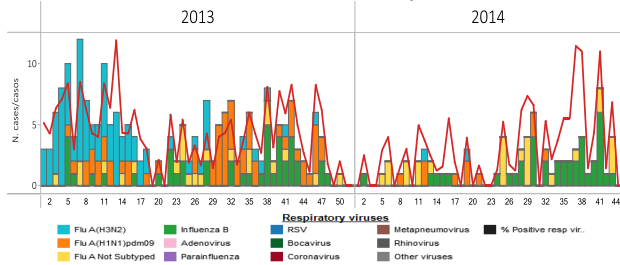


Costa Rica: Respiratory virus distribution, by EW, 2013-14
Distribución de virus respiratorios. por SE, 2013-14

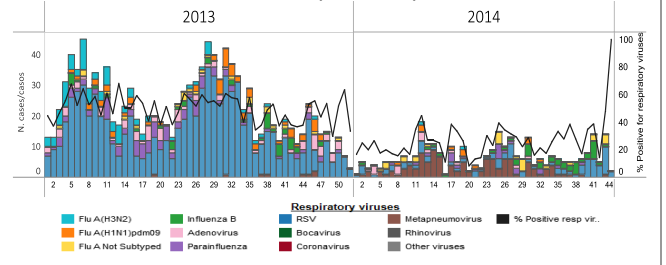


Guatemala

Guatemala: Influenza virus distribution, by EW, 2014
Distribución de virus influenza, por SE, 2014

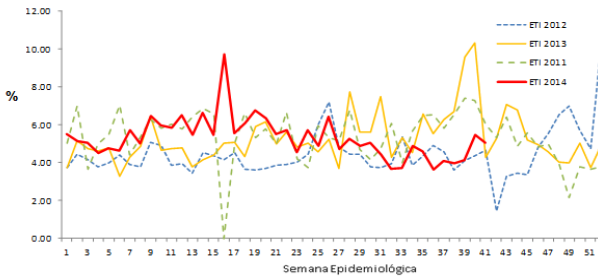


Guatemala: Respiratory virus distribution by EW, 2013-14
Distribución de virus respiratorios por SE, 2013-14

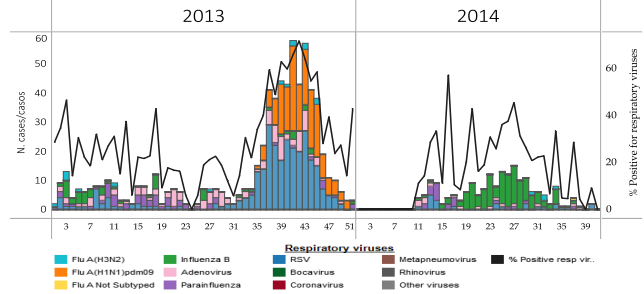


Honduras

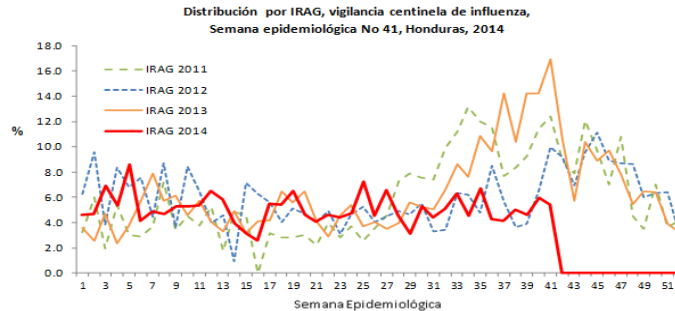
Honduras: Percent of Visits that are ILI by EW, 2011-14
Porcentaje de consultas por ETI, por SE, 2011-14
Distribución de las atenciones por ETI, Vigilancia centinela de influenza, Semana epidemiológica No. 41, Honduras, 2014



Honduras: Respiratory virus distribution by EW, 2013-14
Distribución de virus respiratorios por SE, 2013-14

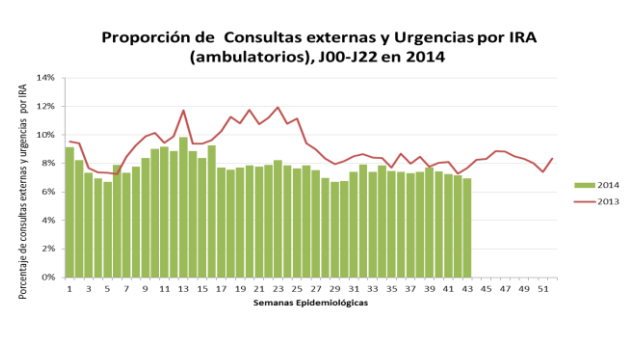


Honduras: % SARI-associated hospitalizations, by EW, 2011-14
% hospitalizaciones asociadas a IRAG, por SE, 2011-14
Distribución por IRAG, vigilancia centinela de influenza, Semana epidemiológica No 41, Honduras, 2014

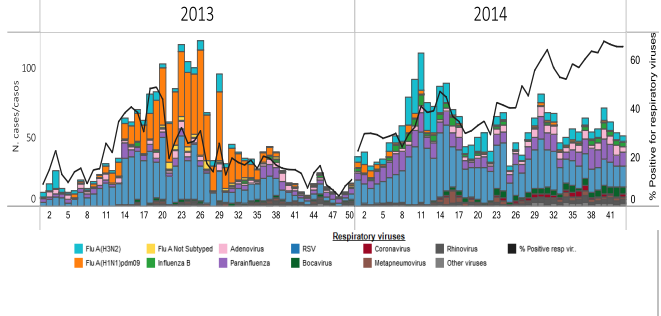


Colombia

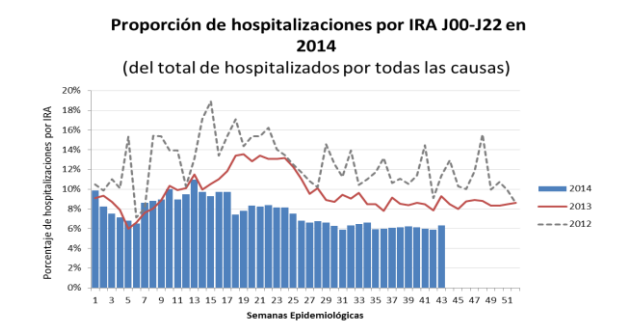
Colombia: ARI outpatient visits with J00-J20 codes, by EW, 2014



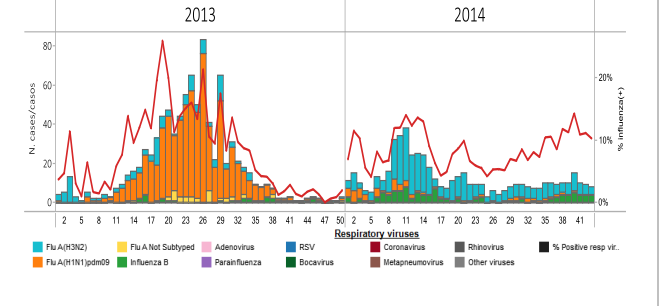
Colombia: Respiratory virus distribution by EW, 2013-14



Colombia: % Hospitalizations with J00 to J20 codes, by EW 2014

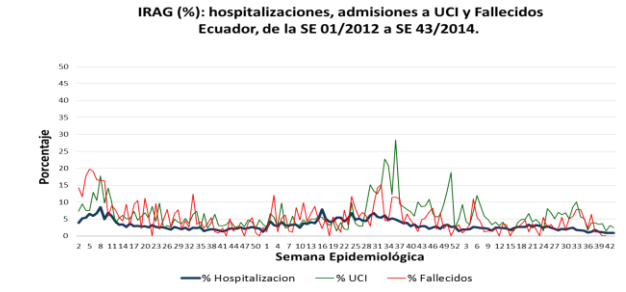


Colombia. Influenza virus distribution by EW, 2013-14

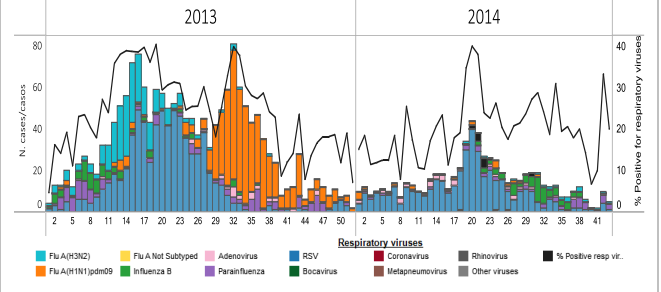


Ecuador

Ecuador: % SARI Hospitalizations, ICU Admissions & Deaths by EW 2013-14

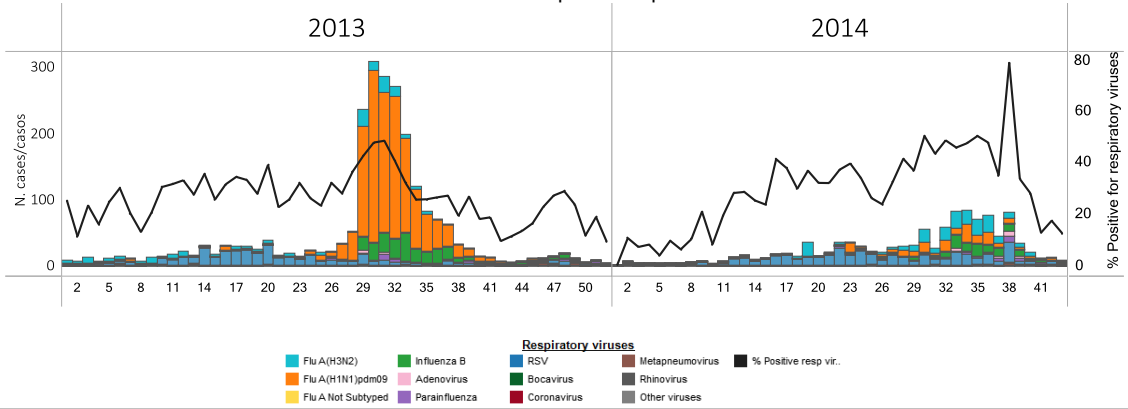


Ecuador (SARI): Respiratory virus distribution by EW, 2013-14



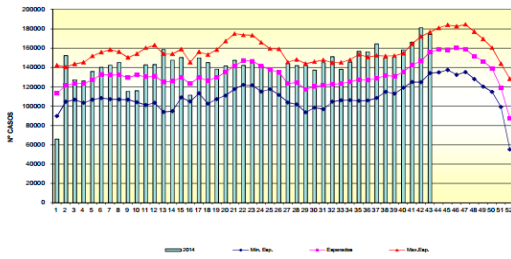
Peru

Peru. Respiratory virus distribution by EW, 2013-14
Distribución de virus respiratorios por SE 2013-14

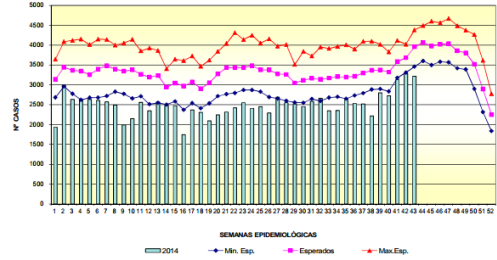


Venezuela

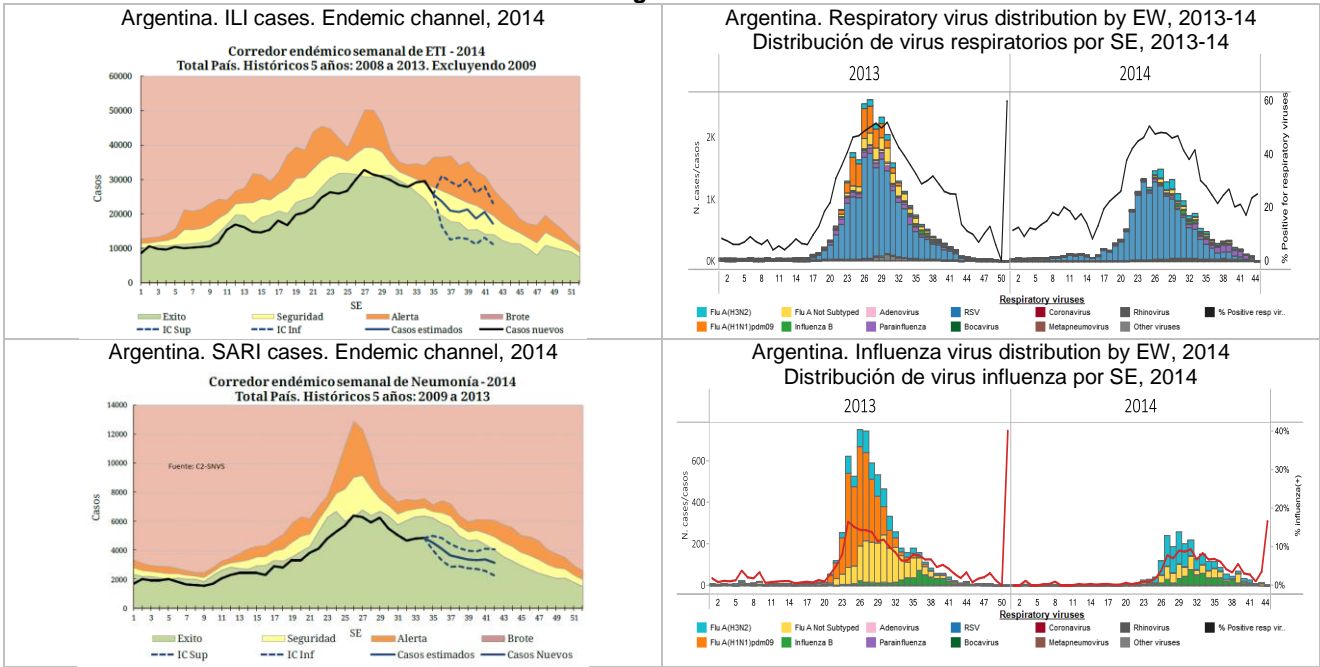
Venezuela: ARI endemic channel, 2006-2014
Canal endémico de IRA, 2006-2014
Infecciones respiratorias agudas
Canal endémico 2006 - 2014
República Bolivariana de Venezuela, 2014



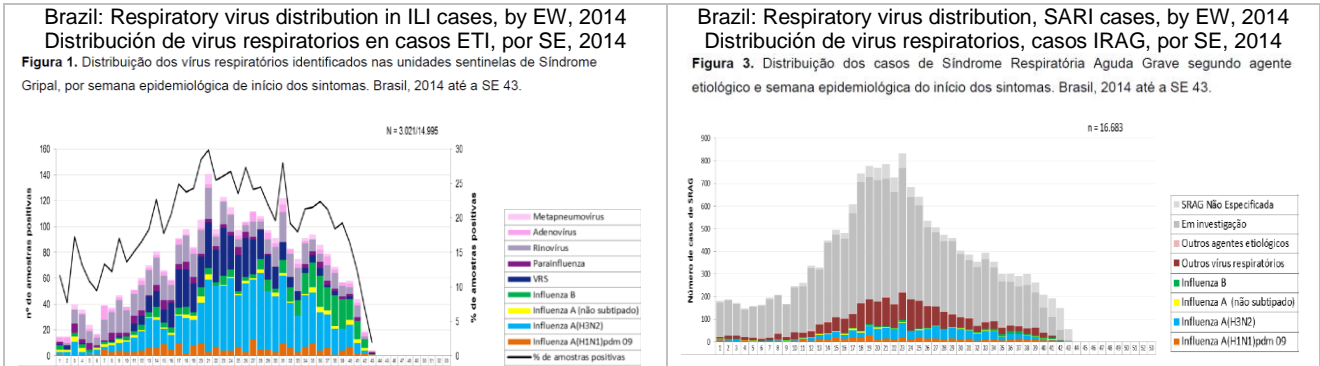
Venezuela: Pneumonia endemic channel, 2006-2014
Canal endémico de Neumonías, 2006-2014
Neumonías
Canal endémico 2006 - 2014
República Bolivariana de Venezuela 2014



Argentina

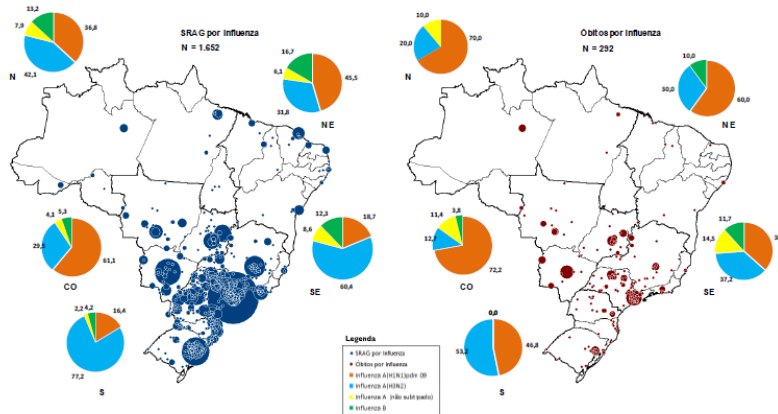


Brazil



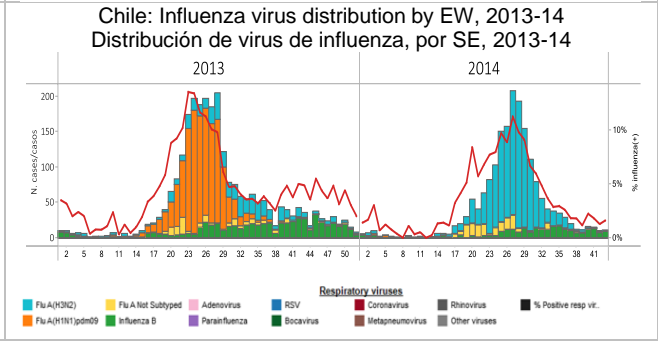
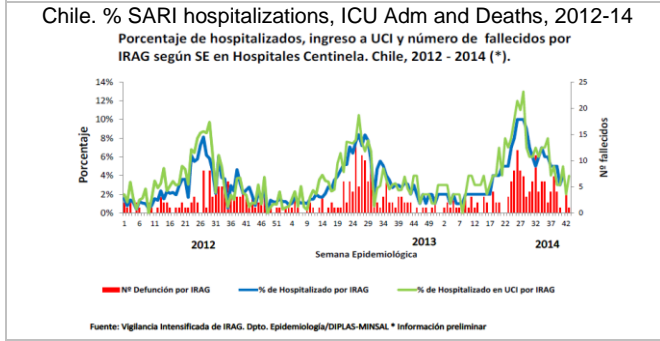
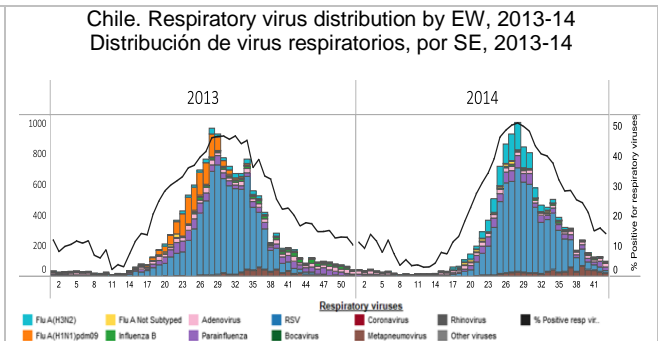
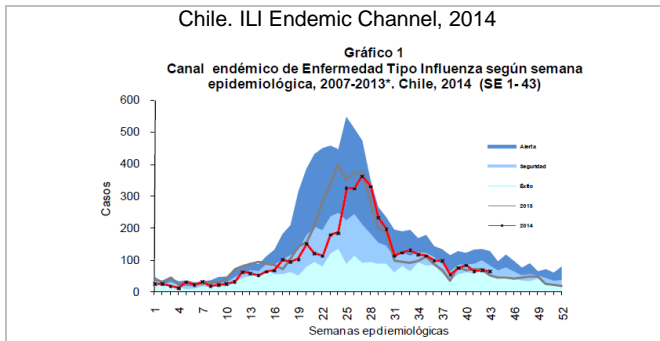
Brazil: Distribution of SARI hospitalizations and deaths by municipality and influenza type/subtype by region

Anexo 4. Distribuição espacial dos casos e óbitos por Síndrome Respiratória Aguda Grave confirmados para influenza por município de residência e percentual dos vírus influenza identificados por região. Brasil, 2014 até a SE 43.

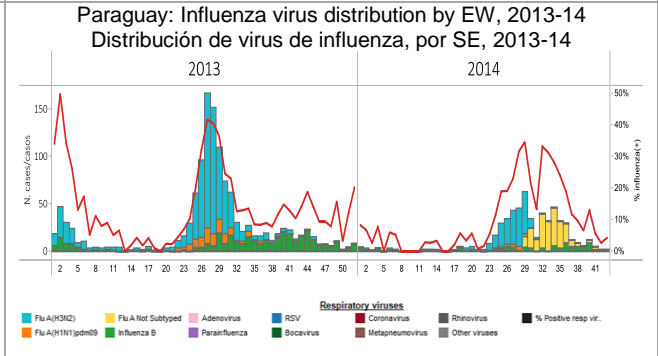
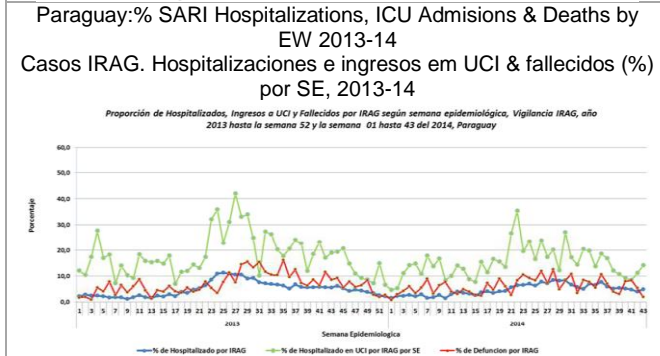
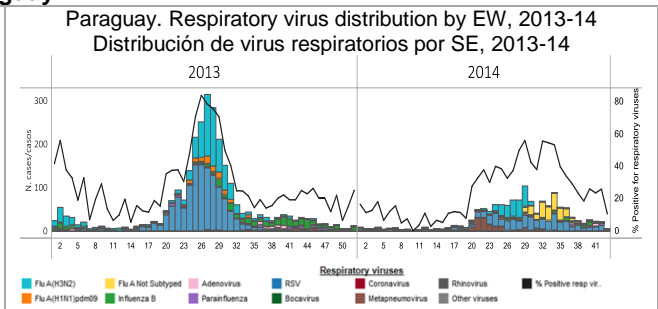
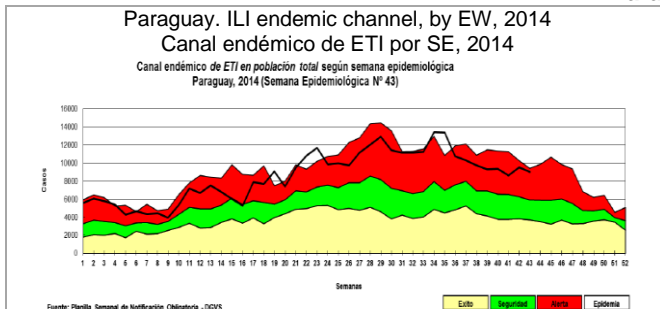


Fonte: SINAN Influenza Web. Dados atualizados em 28/10/2014, sujeitos a alteração.
 * O círculo é proporcional ao número de casos e óbitos. N = Norte; NE = Nordeste; SE = Sudeste; S = Sul; e CO = Centro-Oeste.

Chile

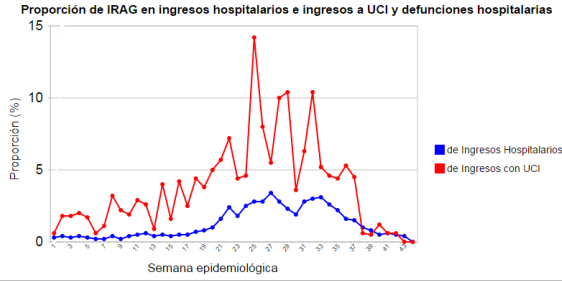


Paraguay

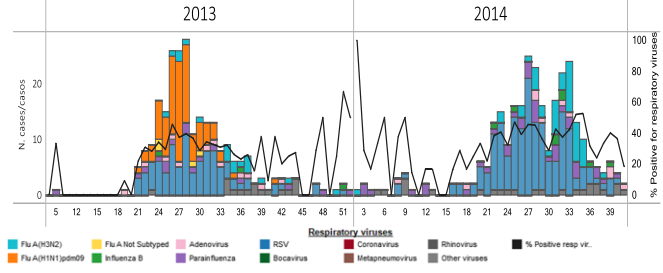


Uruguay

Uruguay: % SARI-associated hospitalizations & ICU admissions by EW, 2014



Uruguay: Respiratory virus distribution by EW, 2013-14
Distribución de virus respiratorios por SE 2013-14

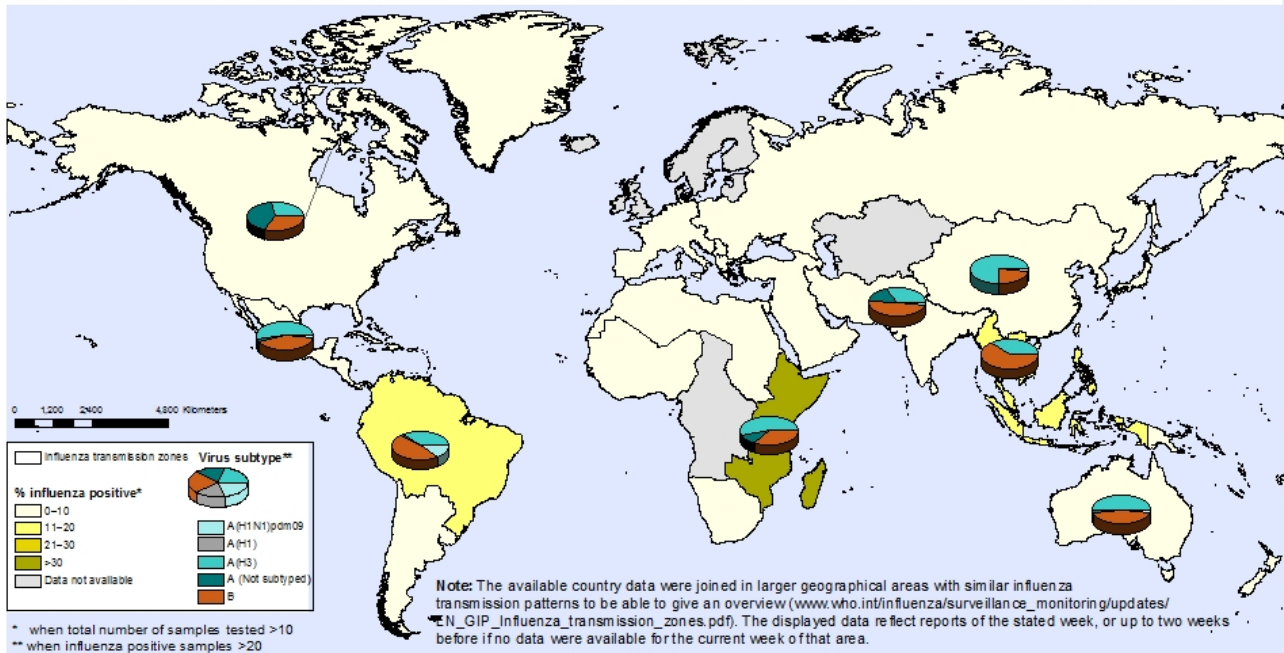


Influenza global update / Actualización de influenza a nivel global

Nivel global: Porcentaje de muestras respiratorias positivas a influenza por zona de transmisión de influenza, SE 42, 2014

Percentage of respiratory specimens that tested positive for influenza
By influenza transmission zone

Status as of week 42
12 -20 October 2014



The boundaries and names shown and the designations used on this map do not imply the expression of any opinion whatsoever on the part of the World Health Organization concerning the legal status of any country, territory, city or area or of its authorities, or concerning the delimitation of its frontiers or boundaries. Dotted and dashed lines on maps represent approximate border lines for which there may not yet be full agreement.

Data Source: WHO/GIP, data in HQ as of 22 August 2014. Data used are from FluNet (www.who.int/flu-net), 08:15 UTC snapshot, from WHO regional offices and/or ministry of health websites.

 **World Health Organization**
© WHO 2014. All rights reserved.