

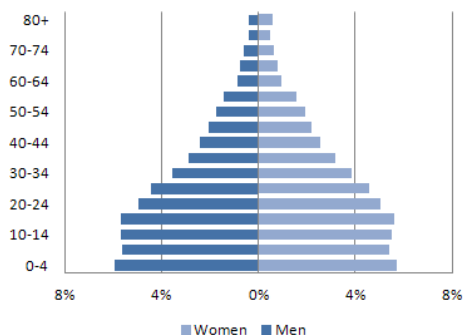


# NICARAGUA: CARDIOVASCULAR DISEASES PROFILE



## DEMOGRAPHIC AND SOCIOECONOMIC PROFILE

### (1) POPULATION PYRAMID (2011)



(2) Total population (2011): 5,869,859

(3) Percentage of population aged 30-69 years (2011): 32.7

(4) Life expectancy at birth (years) (2013):  
Total: 74.8 Male: 71.8 Female: 77.9

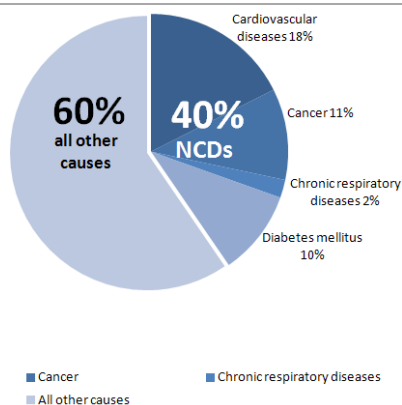
(5) Literate population (15+ years old) (%) (2011): ...

(6) Gross national income (2012):  
Current value (US\$ per capita): 1,650  
Purchasing power parity value (international dollars): 3,960

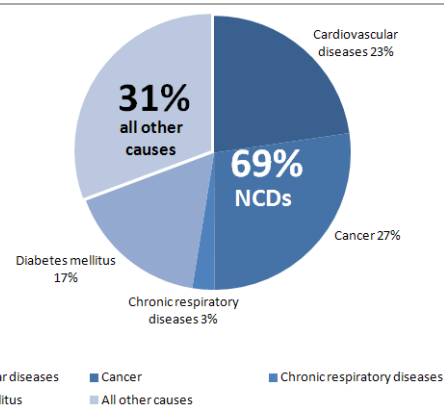
Sources: (1-2): United Nations Population Division. World Population Prospects: The 2010 Revision, New York, 2011; (3-6): PAHO/WHO. Health Situation in the Americas: Basic Indicators 2013. [Internet] Washington, D.C, United States of America, 2013. [Accessed on Feb 20, 2014]. Available from: <http://bit.ly/1jMhEzO>

## ALL CAUSE PREMATURE DEATHS (2011)

### MALE (30-69 yrs)



### FEMALE (30-69 yrs)

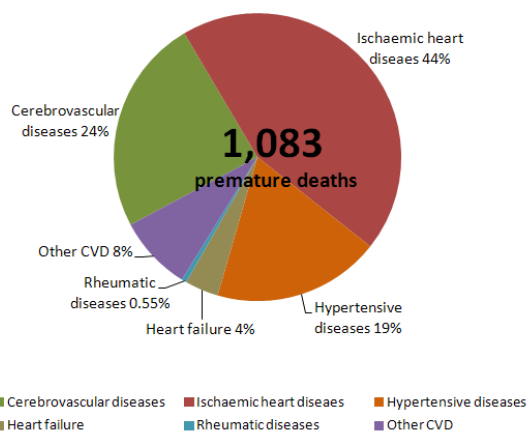


Total premature deaths: 6,167  
4 NCDs premature deaths: 2,493

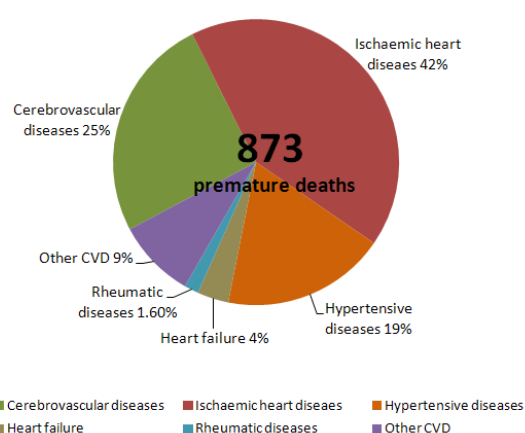
Total premature deaths: 3,848  
4 NCDs premature deaths: 2,667

## CARDIOVASCULAR DISEASES PREMATURE DEATHS (2011)

### MALE (30-69 yrs)



### FEMALE (30-69 yrs)

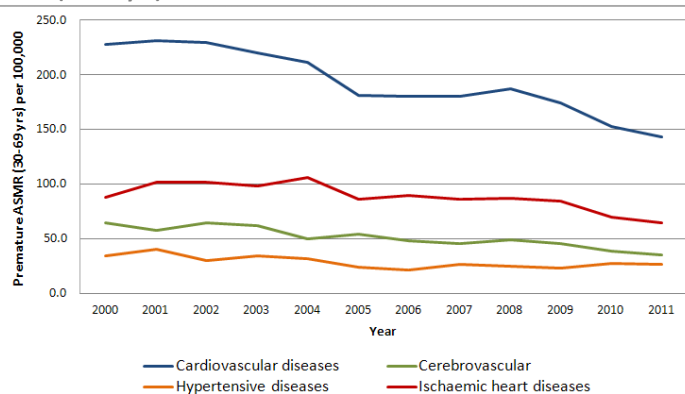


Notes: NCDs: Noncommunicable diseases; CVD: Cardiovascular diseases.

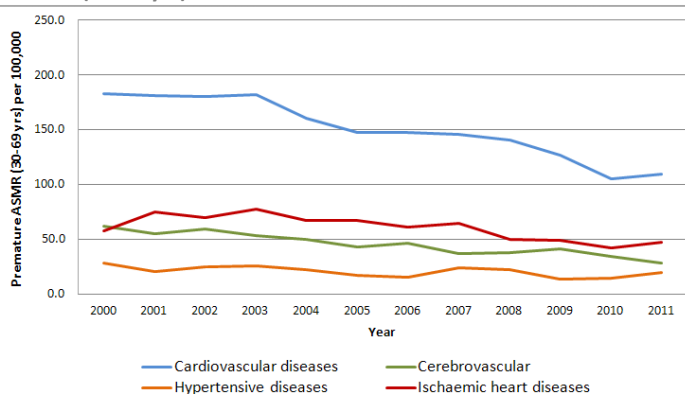
Source: PAHO/WHO Mortality information system 2014 (ICD-10: Cardiovascular diseases (I00-I99), cerebrovascular diseases (I60-I69), hypertensive diseases (I10-I15), ischaemic heart diseases (I20-I25), cancer (C00-99), diabetes (E10-14) and chronic respiratory diseases (J30-98)).

## CARDIOVASCULAR DISEASES AGE-STANDARDIZED PREMATURE MORTALITY RATES AND TRENDS (2000-2011)

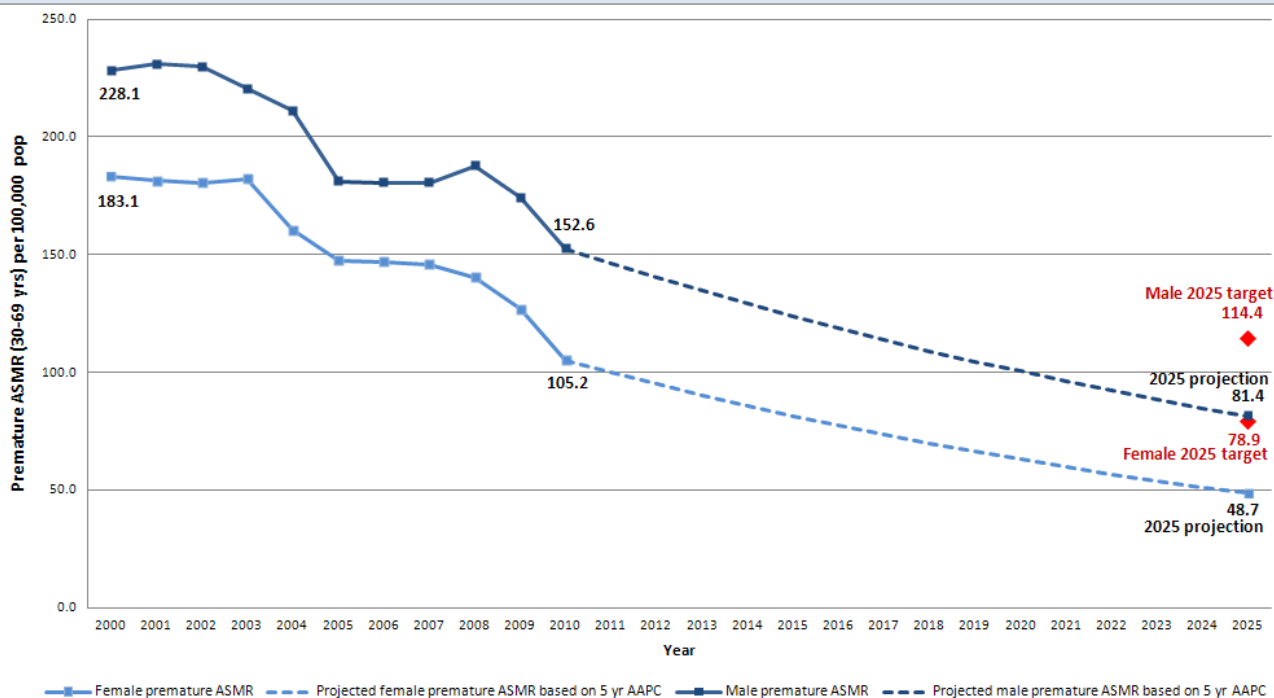
### MALE (30-69 yrs)



### FEMALE (30-69 yrs)



## CARDIOVASCULAR DISEASES AGE-STANDARDIZED PREMATURE MORTALITY TRENDS (2000-2010), 2025 TARGETS AND 2025 PROJECTIONS



Sex	Total CVD premature deaths (2010)	Premature ASMR (2010)	AAPC		2025 target (premature ASMR for a 25% reduction)	2025 projection (premature ASMR based on 5 years AAPC)	Difference between target and projection
			10 years (2002-11)	5years (2007-11)			
Male	1,107	152.6	-4.1*	-4.1*	114.4	81.4	-33.0
Female	829	105.2	-5.0*	-5.0*	78.9	48.7	-30.2

Notes: CVD: Cardiovascular diseases; Premature ASMR: Age-standardized premature mortality rate (30-69 years of age) per 100,000 pop.; AAPC: Average Annual Percentage Change; \*: The AAPC is significantly different from zero at  $p=0.05$ .

A complete description of the methodology used to produce this country profile is available from: <http://bit.ly/1pQtoU4>.

Source: PAHO/WHO Mortality information system 2014 (ICD-10: Cardiovascular diseases (I00-I99), cerebrovascular diseases (I60-I69), hypertensive diseases (I10-I15), ischaemic heart diseases (I20-I25)).