

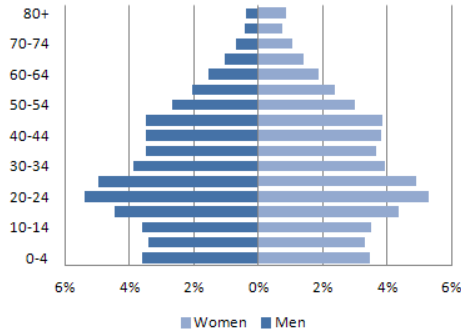


TRINIDAD AND TOBAGO: CARDIOVASCULAR DISEASES PROFILE



DEMOGRAPHIC AND SOCIOECONOMIC PROFILE

(1) POPULATION PYRAMID (2008)



(2) Total population (2008): 1,331,040

(3) Percentage of population aged 30-69 years (2008): 45.6

(4) Life expectancy at birth (years) (2013):
Total: 69.9 Male: 66.4 Female: 73.6

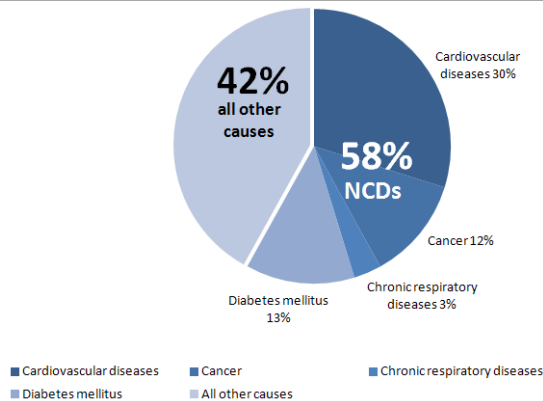
(5) Literate population (15+ years old) (%) (2011): 98.8

(6) Gross national income (2012):
Current value (US\$ per capita): 14,400
Purchasing power parity value (international dollars): 22,400

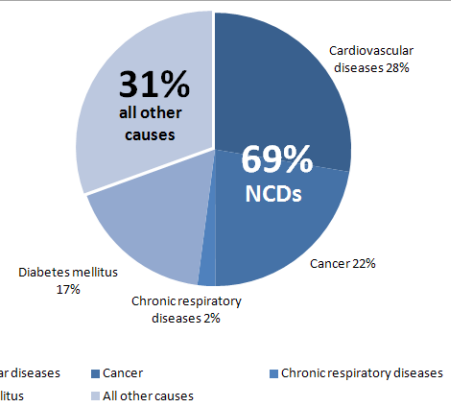
Sources: (1-2): United Nations Population Division. World Population Prospects: The 2010 Revision, New York, 2011; (3-6): PAHO/WHO. Health Situation in the Americas: Basic Indicators 2013. [Internet] Washington, D.C, United States of America, 2013. [Accessed on Feb 20, 2014]. Available from: <http://bit.ly/1jMhEzO>

ALL CAUSE PREMATURE DEATHS (2008)

MALE (30-69 yrs)



FEMALE (30-69 yrs)

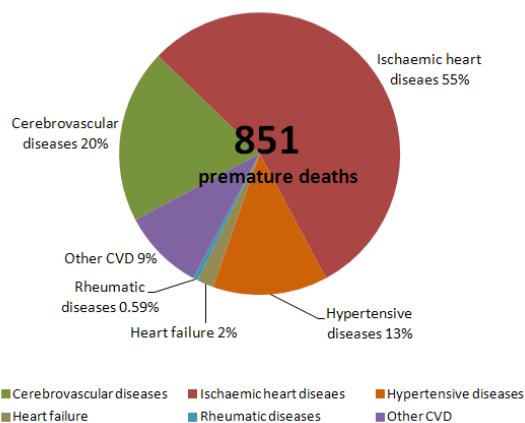


Total premature deaths: 2,851
NCDs premature deaths: 1,656

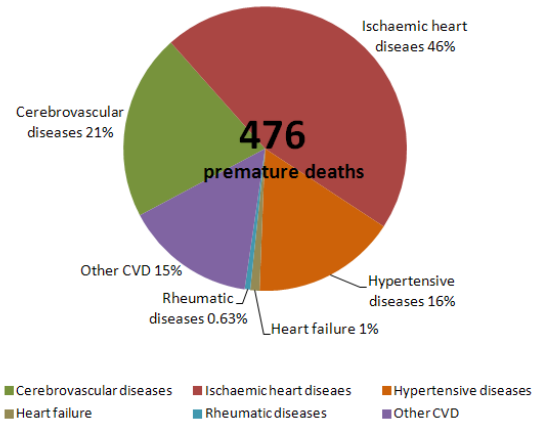
Total premature deaths: 1,723
NCDs premature deaths: 1,197

CARDIOVASCULAR DISEASES PREMATURE DEATHS (2008)

MALE (30-69 yrs)



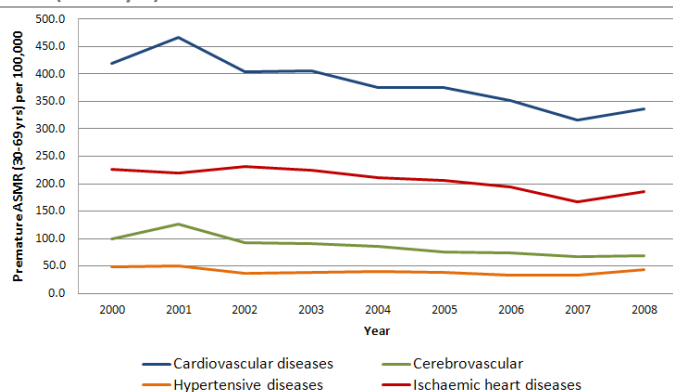
FEMALE (30-69 yrs)



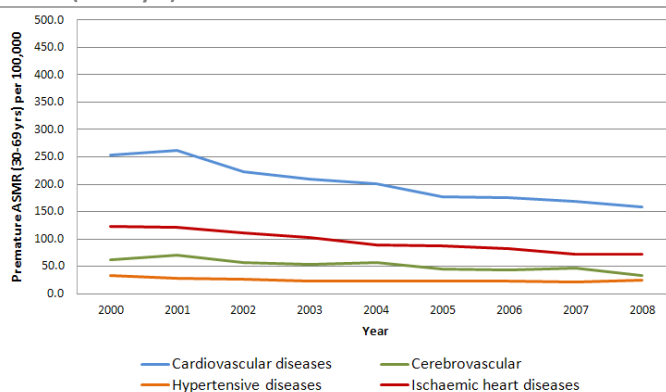
Notes: NCDs: Noncommunicable diseases; CVD: Cardiovascular diseases. Source: PAHO/WHO Mortality information system 2014 (ICD-10: Cardiovascular diseases (I00-I99), cerebrovascular diseases (I60-I69), hypertensive diseases (I10-I15), ischaemic heart diseases (I20-I25), cancer (C00-99), diabetes (E10-14) and chronic respiratory diseases (J30-98)).

CARDIOVASCULAR DISEASES AGE-STANDARDIZED PREMATURE MORTALITY RATES AND TRENDS (2000-2008)

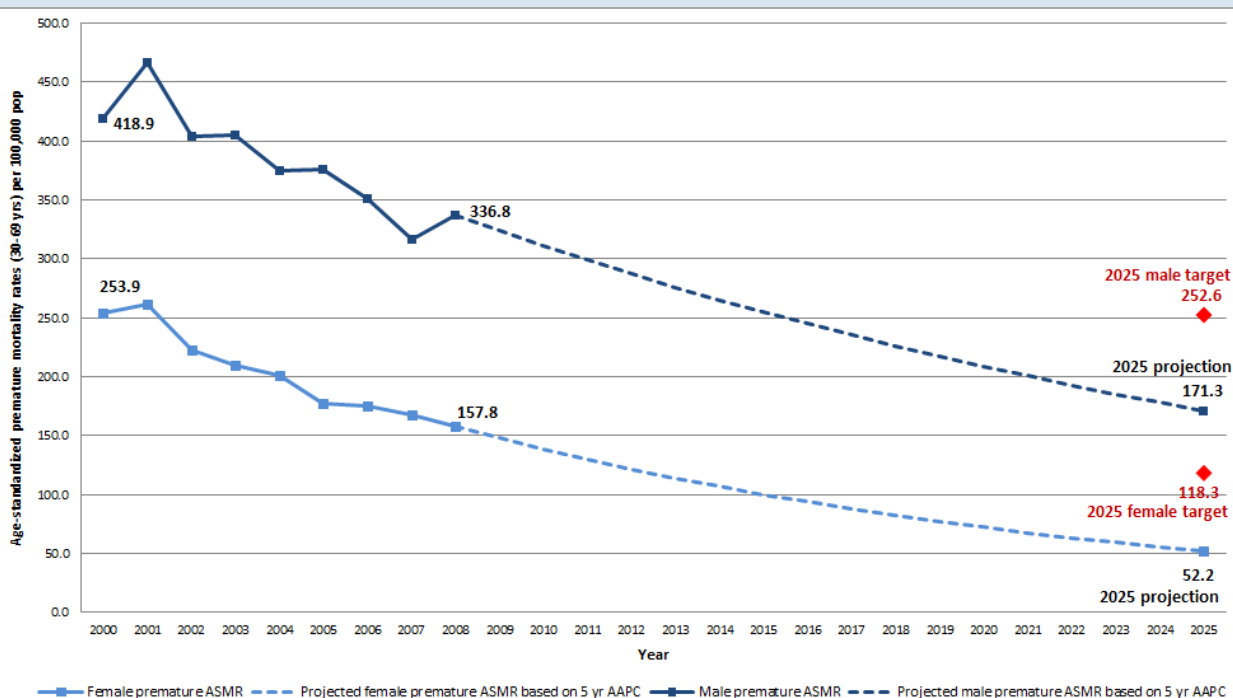
MALE (30-69 yrs)



FEMALE (30-69 yrs)



CARDIOVASCULAR DISEASES AGE-STANDARDIZED PREMATURE MORTALITY TRENDS (2000-2008), 2025 TARGETS AND 2025 PROJECTIONS



Sex	Total CVD premature deaths (2008)	Premature ASMR (2008)	AAPC		2025 target (premature ASMR for a 25% reduction)	2025 projection (premature ASMR based on 5 years AAPC)	Difference between target and projection
			10 years	5 years (2004-08)			
Male	851	336.8	N.C.	-3.9*	252.6	178.2	-74.4
Female	476	157.8	N.C.	-6.3*	118.3	55.7	-62.6

Notes: CVD: Cardiovascular diseases; Premature ASMR: Age-standardized premature mortality rate (30-69 years of age) per 100,000 pop.; AAPC: Average Annual Percentage Change; *: The AAPC is significantly different from zero at $p=0.05$; N.C.: Not possible to calculate (mortality data wasn't available to PAHO for a sufficient number of years to enable a 10 year mortality trend analysis).

A complete description of the methodology used to produce this country profile is available from: <http://bit.ly/1pQtoU4>.

Source: PAHO/WHO Mortality information system 2014 (ICD-10: Cardiovascular diseases (I00-I99), cerebrovascular diseases (I60-I69), hypertensive diseases (I10-I15), ischaemic heart diseases (I20-I25)).