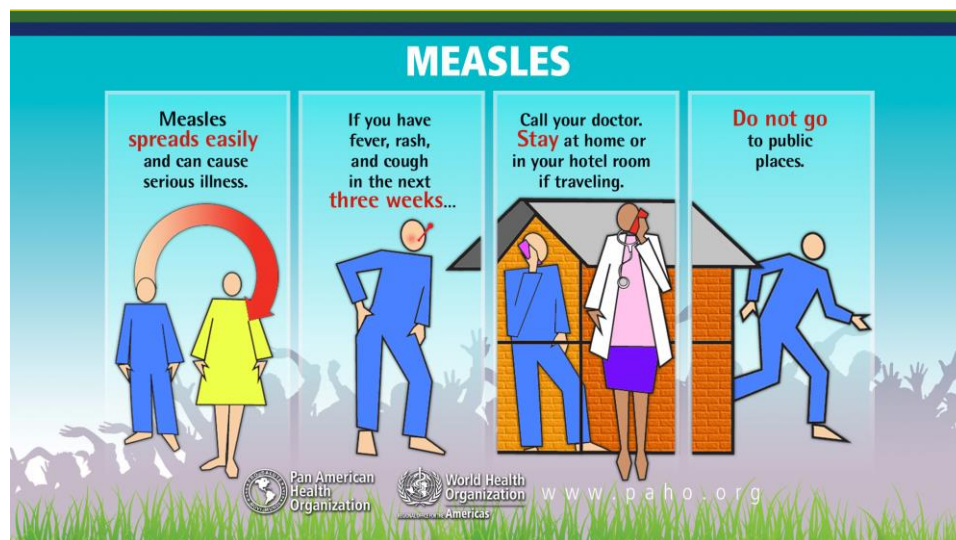


Measles/Rubella Weekly Bulletin



Return Safely from the 2014 FIFA World Cup, Free of Measles and Rubella!

With just two days remaining before the final 2014 FIFA World Cup champion is known, the Pan American Health Organization (PAHO) reissues a health alert to encourage the early detection of measles and rubella in travelers returning to their countries of origin.

Table.1
Classification of Suspect Measles, Rubella, and Congenital Rubella Syndrome (CRS) Cases for the Period of Weeks 01-27, 2014

Subregion and Country	Susp. Cases 2014	Measles Confirmed 2014			Year/Week Last Conf. Measles case	Rubella Confirmed 2014			Year/Week Last Conf. Rubella Case	Diagnosis of Discarded Cases 2014		Congenital Rubella Syndrome			Year/Week Last Conf. CRS Case		
		Clin.	Lab.	Total		Clin.	Lab.	Total		Dengue	Others	Susp.	Conf.	CRI*			
AND	BOL	61	0	0	0	2000/40	0	0	0	2006/03	0	55	0	
	COL	915	0	0	0	2013/25	0	0	0	2012/42	0	839	136	0	0	2005/34	
	ECU	2012/28	2004/45	...	0	
	PER	204	0	0	0	2008/18	0	0	0	2006/45	0	164	0	0	...	2007/16	
	VEN	273	0	0	0	2012/16	0	0	0	2007/51	25	209	6	
BRA	BRA	2962	25	209	234	2014/24	0	0	0	2009/41	0	2324	32	0	...	2009/34	
	CAP	CRI	19	0	0	0	2005/22	0	0	0	2001/42	1	16	0	0	...	
	GTM	103	0	0	0	0	1998/05	0	0	0	2006/30	7	95	2	...	2005/00	
	HND	47	0	0	0	0	1997/29	0	0	0	2004/11	6	39	6	0	0	2001/00
	NIC	59	0	0	0	0	1994/14	0	0	0	2004/19	2	57	10	0	...	2005/00
	PAN	153	0	0	0	0	2011/20	0	0	0	2002/48	1	150	0	
	SLV	270	0	0	0	0	2001/19	0	0	0	2006/30	0	221	0	0	...	2001/00
	CAR	CAR	188	0	0	0	0	2011/48	0	0	0	2008/18	0	176	0	...	1999/00
	LAC	CUB	507	0	0	0	0	1993/27	0	0	0	2004/06	0	507	0	0	...
	DOM	30	0	0	0	0	2011/18	0	0	0	2006/44	0	28	0	
	GLP	0	0	0	0	0	2011/28	0	0	0	...	0	0	...	0	...	2005/00
	GUF	0	0	0	0	0	2011/26	0	0	0	2010/06	0	0	...	0	...	
	HTI	81	0	0	0	0	2001/39	0	0	0	2006/21	0	79	8	0	0	...
	MTQ	1	0	0	0	0	2011/27	0	0	0	...	0	1	...	0	...	
	PRI	
MEX	MEX	2258	0	2	2	2014/04	0	0	0	2012/49	0	1840	0	0	0	...	
NOA	CAN	...	385 ^a	123	508 ^b	2014/26	0	1	1	2014/10	0	0	0	0	...	2011/12	
	USA	539	539 ^b	2014/22	0	1	1	2014/16	0	0	0	2012/44	
SOC	ARG	105	0	0	0	2012/20	0	1	1	2014/22	2	66	48	2009/27	
	CHL	38	0	0	0	2011/25	0	0	0	2011/25	0	25	46	0	0	...	
	PRY	211	0	0	0	1998/44	0	0	0	2005/21	0	201	2	0	0	2003/06	
	URY	1999/08	2001/37	
TOTAL	8484	410	873	1283	--	0	3	3	--	44	7092	296	0	0	--		

*Congenital Rubella Infection; (a) Provisional data and subject to change. Cases are epidemiologically linked and pending investigation. (b) Provisional data.

...No report received



Measles/Rubella Surveillance

Table No.2
Infection Source of Measles and Rubella Confirmed Cases for the Period of Weeks 01-27, 2014

Subregion and Country	Measles				Rubella			
	I	IR	CAC	U	I	IR	CAC	U
AND								
BOL								
COL								
ECU								
PER								
VEN				234				
BRA								
CAP								
CRI								
GTM								
HND								
NIC								
PAN								
SLV								
CAR								
LAC								
CUB								
DOM								
GLP								
GUF								
HTI								
MTQ								
PRI								
MEX				2				
NOA				438	1			
CAN	23	50			1			
USA	92	440		7	1			
SOC					1			
ARG								
CHL								
PRY								
URY								
TOTAL	115	490		681	3	0	0	0

Table No.3
Measles/Rubella Suspect Cases Under Investigation for the Period of Weeks 01-27, 2014

Country	Pending Cases 2013	Cumulative 2014	Week of Onset						% Pend.Cases
			1-22	23	24	25	26	27	
BOL	1	6	6	10
COL	11	76	55	6	3	8	4	0	8
ECU
PER	15	39	28	3	1	2	3	2	19
VEN	0	39	38	1	0	0	0	0	14
BRA	214	404	0	0	0	0	404	0	14
CRI	0	2	2	0	0	0	0	0	11
GTM	0	1	1	0	0	0	0	0	1
HND	0	2	2	0	0	0	0	0	4
NIC	0	0	0	0	0	0	0	0	0
PAN	0	2	2	0	0	0	0	0	1
SLV	48	49	39	0	6	1	2	1	18
CAR	0	12	3	0	1	5	3	0	6
LAC	0	0	0	0	0	0
CUB	0	0	0	0	0	0	0	0	7
DOM	17	2	2	0	0	0	0	0	0
GLP	0	0	0	0	0	0	0	0	0
GUF	0	0	0	0	0	0	0	0	0
HTI	0	2	2	0	0	0	0	0	2
MTQ	0	0	0	0	0	0	0	0	0
PRI
MEX	35	8	8	0	0	0	0	0	0
CAN
USA
ARG	84	36	36	0	0	0	0	0	34
CHL	0	13	13	0	0	0	0	0	34
PRY	6	10	6	0	0	1	1	2	5
URY
TOTAL	431	703	243	10	11	17	417	5	8

I: Imported; IR: Import-related; CAC: Country-acquired case
U: Unknown.

... No report received

Table 4.
Indicators of Integrated Measles/Rubella Surveillance for the Period of Weeks 01-27, 2014

Subregion and Country	Sites Reporting Weekly		% Cases with Adequate Investigation	% Cases with Adequate Sample	% Blood Samples Received in Lab. ≤5 days	% Lab. Results ≤4 days	Rate of Suspected Cases Last 52 weeks (2013/28-2014/27)		
	Total Units	% This Week					Measles/Rubella (100,000 pop.)	CRS (10,000 lb)	
AND	BOL	3127	...	98	97	75	84	1.3	0.1
	COL	5459	...	73	92	89	98	4.6	3.9
	ECU	2184	0.0	...
	PER	76	86	70	36	1.5	0.0
	VEN	13092	...	92	97	63	47	1.9	0.2
BRA	BRA	9991	92	...	75	75	53	2.8	0.2
CAP	CRI	57	...	42	95	68	58	0.7	0.0
	GTM	1506	75	15	91	55	76	1.9	0.1
	HND	469	91	57	100	81	100	2.2	0.8
	NIC	185	...	95	100	97	95	2.5	2.3
	PAN	223	75	95	97	83	88	6.6	0.1
	SLV	1218	...	70	95	89	67	7.1	3.8
CAR	CAR	628	60	14	88	6	92	4.6	0.0
LAC	CUB	150	100	100	100	100	100	10.3	0.0
	DOM	10	100	65	70	0.8	0.0
	GLP	0.4	...
	GUF	0.4	...
	HTI	136	99	91	99	89	67	2.1	1.2
	MTQ	0.0	...
	PRI	0.0	...
MEX	MEX	11138	...	98	98	89	81	3.6	0.0
NOA	CAN
	USA
SOC	ARG	779	...	15	94	59	26	0.7	1.4
	CHL	792	97	61	86	92	96	0.8	3.5
	PRY	988	92	50	94	94	82	5.7	0.3
	URY	155	0.0	0.0
Total and Average*		52277	90	82	89	81	71	2.9	0.6

*Weighted