

# Measles/Rubella Weekly Bulletin



Comprehensive Family Immunization/Family, Gender and Life Course  
Measles and Rubella Surveillance in the Americas

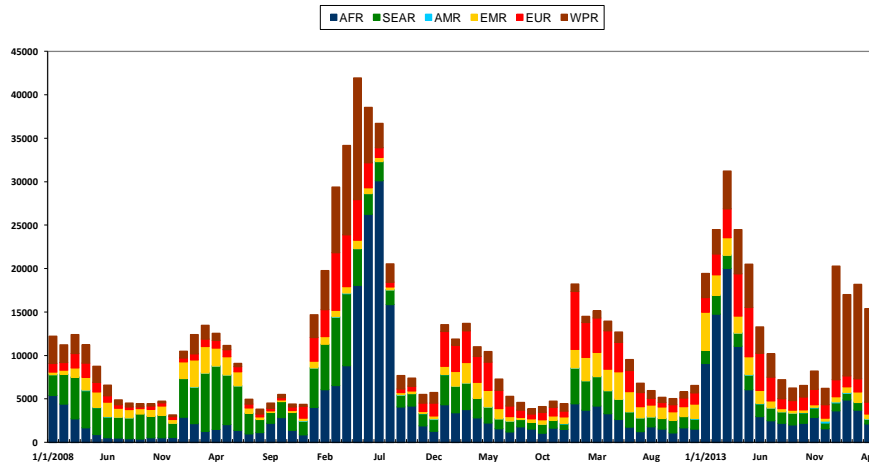


Vol. 20, No. 24

Week ending 14 June 2014

## Measles Case Distribution by Month and WHO Regions, 2008-2014\*

During 2000-2012, the annual number of measles cases reported worldwide decreased by 73%, from 853 480 to a historic low of 226 722. Measles incidence decreased by 77%, from 146 to 33 cases per million population per year. The decrease in 2012 occurred in all Regions. In 2013, there was a resurgence of measles cases due to large scale measles outbreaks in several African countries (n=177,963 cases). In 2014, 62% of the cases have been reported in the Western Pacific Region (WPR), mainly from a large scale outbreak in the Philippines, which has been associated to several imported cases to the United States (n=22) and Canada (n=18).



This is surveillance data, hence for the last month, the data may be incomplete.  
SEAR, India is not included in this graph.  
As of 27 May 2013, South Sudan has reassigned to the Africa region (AFR) from the Eastern Mediterranean region (EMR).

Data source: surveillance DEF file  
\*Data in HQ as of 10 June 2014

Table.1  
Classification of Suspect Measles, Rubella, and Congenital Rubella Syndrome (CRS) Cases for the Period of Weeks 01-24, 2014

Subregion and Country	Susp. Cases 2014	Measles Confirmed 2014			Year/Week Last Conf. Measles case	Rubella Confirmed 2014			Year/Week Last Conf. Rubella Case	Diagnosis of Discarded Cases 2014		Congenital Rubella Syndrome			Year/Week Last Conf. CRS Case		
		Clin.	Lab.	Total		Clin.	Lab.	Total		Dengue	Others	Susp.	Conf.	CR1*			
AND	BOL	61	0	0	0	2000/40	0	0	0	2006/03	0	55	...	...	...	...	
	COL	824	0	0	0	2013/25	0	0	0	2012/42	0	747	120	0	0	2005/34	
	ECU	...	...	...	...	2012/28	...	...	...	2004/45	...	...	...	...	...	...	
	PER	150	0	0	0	2008/18	0	0	0	2006/45	0	126	0	0	...	2007/16	
	VEN	239	0	0	0	2012/16	0	0	0	2007/51	25	186	6	...	...	...	
BRA	BRA	2636	25	197	222	2014/23	0	0	0	2009/41	0	1668	29	0	...	2009/34	
	CRI	18	0	0	0	2005/22	0	0	0	2001/42	1	9	0	0	...	...	
	GTM	92	0	0	0	1998/05	0	0	0	2006/30	7	84	2	...	...	2005/00	
	HND	38	0	0	0	1997/29	0	0	0	2004/11	2	15	6	0	0	2001/00	
	NIC	41	0	0	0	1994/14	0	0	0	2004/19	1	7	9	0	...	2005/00	
CAR	PAN	141	0	0	0	2011/20	0	0	0	2002/48	1	138	0	...	...	...	
	SLV	246	0	0	0	2001/19	0	0	0	2006/30	0	246	0	0	...	2001/00	
	CAR	170	0	0	0	2011/48	0	0	0	2008/18	0	164	0	...	...	1999/00	
	LAC	CUB	507	0	0	0	1993/27	0	0	0	2004/06	0	507	0	0	...	...
	DOM	30	0	0	0	2011/18	0	0	0	2006/44	0	28	0	...	...	...	
MEX	GLP	0	0	0	0	2011/28	0	0	0	...	...	...	...	0	...	2005/00	
	GUF	0	0	0	0	2011/26	0	0	0	2010/06	...	...	...	0	...	...	
	HTI	79	0	0	0	2001/39	0	0	0	2006/21	0	76	8	0	0	...	
	MTQ	0	0	0	0	2011/27	0	0	0	...	...	...	...	0	...	...	
	PRI	...	...	...	...	...	...	...	...	...	...	...	...	...	...	...	
NOA	MEX	1573	0	2	2	2014/04	0	0	0	2012/49	0	1244	0	0	0	...	
	CAN	...	385 <sup>a</sup>	119	504 <sup>b</sup>	2014/24	0	1	1	2014/10	0	0	0	0	...	2011/12	
SOC	USA	...	...	477	477 <sup>b</sup>	2014/19	0	1	1	2014/16	...	...	...	...	...	2012/44	
	ARG	100	0	0	0	2012/20	0	1	1	2011/20	2	63	48	...	...	2009/27	
	CHL	38	0	0	0	2011/25	0	0	0	2011/25	0	25	46	0	0	...	
	PRY	119	0	0	0	1998/44	0	0	0	2005/21	0	109	2	0	0	2003/06	
	URY	...	...	...	...	1999/08	...	...	...	2001/37	0	0	0	...	...	...	
<b>TOTAL</b>	<b>7102</b>	<b>410</b>	<b>795</b>	<b>1205</b>	<b>--</b>	<b>0</b>	<b>3</b>	<b>3</b>	<b>--</b>	<b>39</b>	<b>5497</b>	<b>276</b>	<b>0</b>	<b>0</b>	<b>--</b>		

\*Congenital Rubella Infection; (a) Provisional data and subject to change. Cases are epidemiologically linked and pending investigation. (b) Provisional data.

...No report received



# Measles/Rubella Surveillance

**Table No.2**  
Infection Source of Measles and Rubella Confirmed Cases for the Period of Weeks 01-24, 2014

Subregion and Country	Measles				Rubella			
	I	IR	CAC	U	I	IR	CAC	U
AND								
BOL								
COL								
ECU								
PER								
VEN				222				
BRA								
CAP								
CRI								
GTM								
HND								
NIC								
PAN								
SLV								
CAR								
LAC								
CUB								
DOM								
GLP								
GUF								
HTI								
MTQ								
PRI								
MEX				2				
NOA				436	1			
CAN	23	45		7	1			
USA	91	379			1			
SOC					1			
ARG								
CHL								
PRY								
URY								
<b>TOTAL</b>	<b>114</b>	<b>424</b>		<b>667</b>	<b>3</b>	<b>0</b>	<b>0</b>	<b>0</b>

**Table No.3**  
Measles/Rubella Suspect Cases Under Investigation for the Period of Weeks 01-24, 2014

Country	Pending Cases 2013	Cumulative 2014	Week of Onset						% Pend.Cases
			1-19	20	21	22	23	24	
BOL	1	6	4	1	1	0	...	...	10
COL	11	77	42	11	13	7	4	0	9
ECU	...	...	...	...	...	...	...	...	...
PER	15	24	18	2	2	2	0	...	16
VEN	0	28	25	3	0	0	0	0	12
BRA	214	509	0	0	0	0	509	0	19
CRI	0	8	4	2	1	0	1	0	44
GTM	0	1	0	0	0	1	0	0	1
HND	0	21	12	5	0	2	2	0	55
NIC	0	33	26	4	3	0	0	0	80
PAN	0	2	0	0	1	1	0	0	1
SLV	0	0	0	0	0	0	0	0	0
CAR	0	6	2	0	0	3	1	0	4
LAC	0	0	0	0	0	0	0	0	0
CUB	0	2	2	0	0	0	0	0	7
DOM	0	0	0	0	0	0	0	0	0
GLP	0	0	0	0	0	0	0	...	0
GUF	0	0	0	0	0	0	0	...	0
HTI	0	3	2	1	0	0	0	0	4
MTQ	0	0	0	0	0	0	0	0	0
PRI	...	...	...	...	...	...	...	...	...
MEX	35	6	6	0	0	0	0	0	0
CAN	...	...	...	...	...	...	...	...	...
USA	...	...	...	...	...	...	...	...	...
ARG	84	34	29	4	0	1	0	0	34
CHL	0	13	13	0	0	0	0	0	34
PRY	6	10	10	0	0	0	0	0	8
URY	...	...	...	...	...	...	...	...	...
<b>TOTAL</b>	<b>366</b>	<b>783</b>	<b>195</b>	<b>33</b>	<b>21</b>	<b>17</b>	<b>517</b>	<b>0</b>	<b>11</b>

I: Imported; IR: Import-related; CAC: Country-acquired case  
U: Unknown.

... No report received

**Table 4.**  
Indicators of Integrated Measles/Rubella Surveillance for the Period of Weeks 01-24, 2014

Subregion and Country	Sites Reporting Weekly		% Cases with Adequate Investigation	% Cases with Adequate Sample	% Blood Samples Received in Lab. ≤5 days	% Lab. Results ≤4 days	Rate of Suspected Cases Last 52 weeks (2013/25-2014/24)		
	Total Units	% This Week					Measles/Rubella (100,000 pop.)	CRS (10,000 lb)	
AND	BOL	3127	...	98	97	75	84	1.4	...
	COL	5437	...	70	92	91	98	4.7	3.8
	ECU	2184	...	...	...	...	...	0.0	...
	PER	...	...	83	89	78	44	1.4	0.0
	VEN	13092	...	92	98	64	44	1.8	0.2
BRA	BRA	12876	85	99	76	76	55	2.7	0.2
CAP	CRI	57	...	28	94	67	56	0.7	0.0
	GTM	1506	55	16	91	56	77	1.9	0.1
	HND	469	91	55	100	84	100	2.1	1.0
	NIC	185	...	41	95	82	79	2.6	2.2
	PAN	223	79	95	99	82	88	6.4	0.1
	SLV	893	90	69	96	89	66	6.9	-2.5
CAR	CAR	759	37	10	91	6	92	4.6	0.0
LAC	CUB	150	100	100	100	100	100	10.3	0.0
	DOM	...	...	10	100	65	70	0.8	0.0
	GLP	...	...	...	...	...	...	0.4	...
	GUF	...	...	...	...	...	...	0.4	...
	HTI	133	95	91	99	90	64	2.3	1.5
	MTQ	...	...	...	...	...	...	0.0	...
	PRI	...	...	...	...	...	...	0.0	...
MEX	MEX	11138	...	98	98	90	81	3.2	0.0
NOA	CAN	...	...	...	...	...	...	...	...
	USA	...	...	...	...	...	...	...	...
SOC	ARG	779	0	16	94	59	27	0.7	1.5
	CHL	801	0	61	86	92	96	0.8	6.0
	PRY	988	0	54	94	94	97	4.4	0.3
	URY	155	...	...	...	...	...	0.0	0.0
<b>Total and Average*</b>		<b>54962</b>	<b>83</b>	<b>87</b>	<b>89</b>	<b>81</b>	<b>72</b>	<b>2.7</b>	<b>0.7</b>

\*Weighted