

Measles/Rubella Weekly Bulletin



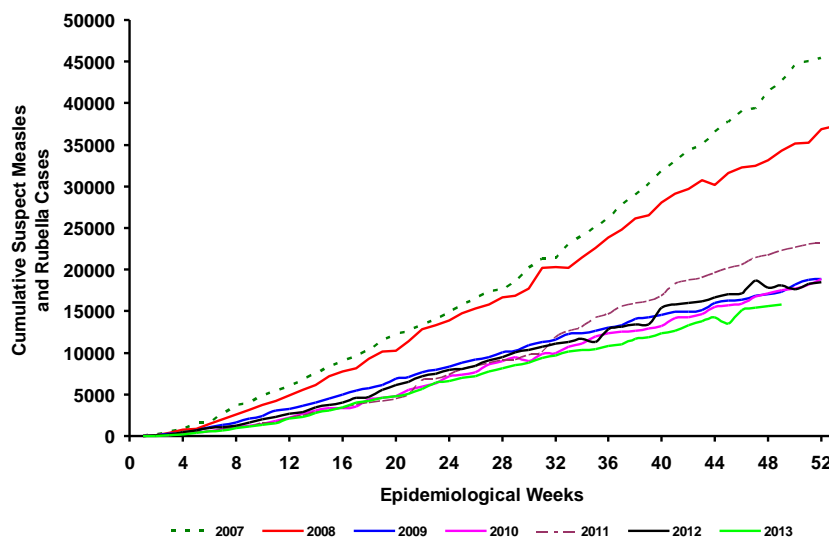
Comprehensive Family Immunization/Family, Gender and Life Course
Measles and Rubella Surveillance in the Americas



Vol. 19, No. 49

Week ending 7 December 2013

Cumulative suspected measles and rubella cases by epidemiological week, the Americas, 2007–2013*



Source: ISIS, MESS and country reports

* Data as of week 49, 2013.

Table.1
Classification of Suspect Measles, Rubella, and Congenital Rubella Syndrome (CRS) Cases for the Period of Weeks 01-49, 2013

Subregion and Country	Susp. Cases 2013	Measles Confirmed 2013			Year/Week Last Conf. Measles case	Rubella Confirmed 2013			Year/Week Last Conf. Rubella Case	Diagnosis of Discarded Cases 2013		Congenital Rubella Syndrome			Year/Week Last Conf. CRS Case	
		Clin.	Lab.	Total		Clin.	Lab.	Total		Dengue	Others	Susp.	Conf.	CRI*		
AND	BOL	141	0	0	0	2000/40	0	0	0	2006/03	1	135	22
	COL	1953	0	1	1	2013/25	0	0	0	2012/42	8	1867	281	0	0	2005/34
	ECU	2012/28	2004/45
	PER	411	0	0	0	2008/18	0	0	0	2006/45	1	385	0	2007/16
	VEN	321	0	0	0	2012/16	0	0	0	2007/51	28	140	3	0	0	...
BRA	BRA	4618	0	138	138	2013/48	0	0	0	2009/41	0	3951	120	0	0	2009/34
	CRI	26	0	0	0	2005/22	0	0	0	2001/42	3	21	0	0
	GTM	300	0	0	0	1998/05	0	0	0	2006/30	73	212	5	0	0	2005/00
	HND	146	0	0	0	1997/29	0	0	0	2004/11	90	46	65	0	0	2001/00
	NIC	176	0	0	0	1994/14	0	0	0	2004/19	5	171	36	0	...	2005/00
CAR	PAN	139	0	0	0	2011/20	0	0	0	2002/48	0	130	2	0
	SLV	275	0	0	0	2001/19	0	0	0	2006/30	0	0	0	0	0	2001/00
	CAR	327	0	0	0	2011/48	0	0	0	2008/18	1	226	0	1999/00
	CUB	998	0	0	0	1993/27	0	0	0	2004/06	0	998	0	0
	DOM	62	0	0	0	2011/18	0	0	0	2006/44	0	41	0
LAC	GLP	2	0	0	0	2011/28	0	0	0	...	0	0	0	2005/00
	GUF	1	0	0	0	2011/26	0	0	0	2010/06	0	0	0
	HTI	350	0	0	0	2001/39	0	0	0	2006/21	0	253	47	0
	MTQ	0	0	0	0	2011/27	0	0	0
	PRI
MEX	MEX	4723	0	0	0	2011/12	0	0	0	2012/49	0	4697	0	0
	NOA	82	82 ^a	2013/48	0	1	1	2013/15	0	0	0	0	...	2011/12
SOC	USA	172	172 ^a	2013/45	0	6	6	2013/04	0	0	0	0	...	2012/44
	ARG	278	0	0	0	2012/20	0	0	0	2011/20	1	191	104	2009/27
	CHL	153	0	0	0	2011/25	0	0	0	2011/25	0	123	114	0	0	...
	PRY	438	0	0	0	1998/44	0	0	0	2005/21	151	280	2	0	0	2003/06
	URY	0	0	0	0	1999/08	0	0	0	2001/37	0	0	0	0	0	...
TOTAL	15838	0	393	393	--	0	7	7	--	362	13867	801	0	0	--	

*Congenital Rubella Infection; (a) Provisional data;

...No report received



Measles/Rubella Surveillance

Table No.2
Infection Source of Measles and Rubella Confirmed Cases for the Period of Weeks 01-49, 2013

Subregion and Country	Measles				Rubella			
	I	IR	CAC	U	I	IR	CAC	U
AND								
BOL	1							
COL								
ECU								
PER								
VEN								
BRA	4	5		129				
CAP								
CRI								
GTM								
HND								
NIC								
PAN								
SLV								
CAR								
LAC								
CUB								
DOM								
GLP								
GUF								
HTI								
MTQ								
PRI								
MEX								
NOA								
CAN	11	64		7	1			
USA	55	114		3	4			2
SOC								
ARG								
CHL								
PRY								
URY								
TOTAL	71	183		139	5			2

Table No.3
Measles/Rubella Suspect Cases Under Investigation for the Period of Weeks 01-49, 2013

Country	Pending Cases 2012	Cumulative 2013	Week of Onset							% Pend.Cases
			1-44	45	46	47	48	49		
BOL	1	5	4	0	0	0	1	0	4	
COL	0	76	72	4	0	0	4	
ECU	0	
PER	0	25	12	2	7	2	2	...	6	
VEN	0	146	143	1	2	0	45	
BRA	0	529	11	
CRI	0	2	1	0	1	0	0	...	8	
GTM	0	15	9	3	3	0	0	0	5	
HND	0	0	0	0	0	0	0	0	0	
NIC	0	0	0	0	0	0	0	...	0	
PAN	0	9	9	0	0	0	6	
SLV	0	275	275	0	0	100	
CAR	0	99	95	2	1	1	0	0	30	
CUB	0	0	0	0	0	0	0	...	0	
DOM	0	21	21	0	0	0	0	0	34	
GLP	0	0	0	0	0	0	0	0	0	
GUF	0	0	0	0	0	0	0	0	0	
HTI	0	97	96	1	0	0	0	0	28	
MTQ	0	0	0	0	0	0	0	0	0	
PRI	
MEX	0	26	25	0	1	0	0	0	1	
CAN	
USA	
ARG	247	84	84	0	0	0	0	...	30	
CHL	0	30	6	6	4	7	5	2	20	
PRY	1	7	7	0	0	0	0	0	2	
URY	0	0	0	
TOTAL	249	1446	859	19	19	10	8	2	9	

I: Imported; IR: Import-related; CAC: Country-acquired case
U: Unknown.

... No report received

Table 4.
Indicators of Integrated Measles/Rubella Surveillance for the Period of Weeks 01-49, 2013

Subregion and Country	Sites Reporting Weekly		% Cases with Adequate Investigation	% Cases with Adequate Sample	% Blood Samples Received in Lab. ≤5 days	% Lab. Results ≤4 days	Rate of Suspected Cases Last 52 weeks (2012/50-2013/49)		
	Total Units	% This Week					Measles/Rubella (100,000 pop.)	CRS (10,000 lb)	
AND	BOL	2997	79	99	99	82	88	1.5	0.8
	COL	5029	...	77	94	90	96	4.5	3.7
	ECU	2184
	PER	7325	...	91	96	80	47	1.5	0.0
	VEN	13092	...	76	86	19	16	1.1	0.1
BRA	BRA	13181	83	99	79	79	57	2.4	0.1
CAP	CRI	57	...	31	69	72	60	0.6	0.0
	GTM	1506	20	1	91	69	84	2.2	0.1
	HND	469	97	38	96	71	98	2.0	3.3
	NIC	185	...	91	99	89	75	3.1	2.0
	PAN	222	...	83	97	69	91	4.2	0.3
	SLV	893	...	21	59	54	96	4.5	7.2
CAR	CAR	759	70	10	20	26	77	4.5	0.0
LAC	CUB	150	100	100	100	100	100	9.4	0.0
	DOM	251	69	6	98	67	61	0.7	0.0
	GLP	0.4	...
	GUF	0.4	...
	HTI	105	90	90	98	85	78	3.5	1.8
	MTQ	0.0	...
	PRI	0.0	...
MEX	MEX	11138	...	98	4.4	0.0
NOA	CAN
	USA
SOC	ARG	779	0	13	90	66	48	0.7	2.3
	CHL	569	100	53	77	93	94	1.0	4.6
	PRY	929	36	84	95	94	89	7.6	0.1
	URY	155	0	0	0	0	0	0.0	0.0
Total and Average*		61975	77	86	85	79	72	2.8	1.0

*Weighted

... No report received