

# Measles/Rubella Weekly Bulletin



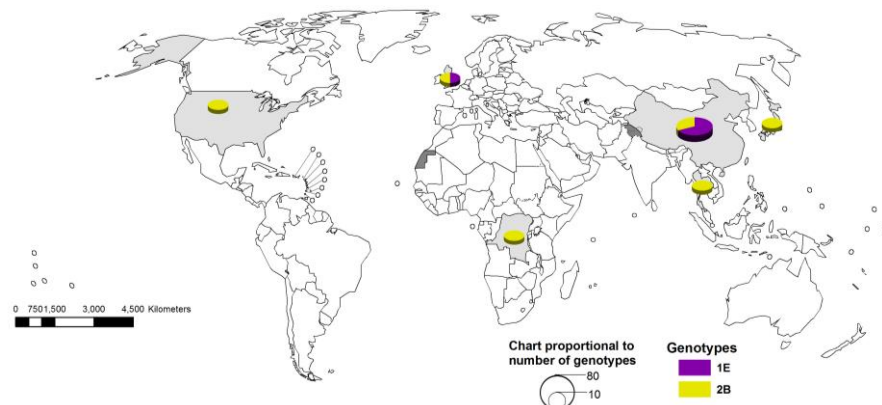
Comprehensive Family Immunization/Family, Gender and Life Course  
Measles and Rubella Surveillance in the Americas



Vol. 19, No. 46

Week ending 16 November 2013

## Distribution rubella genotypes (Oct 2012–Sep 2013)



Data source: RubeNS Database  
Updated on 21 October 2013

**Table.1**  
Classification of Suspect Measles, Rubella, and Congenital Rubella Syndrome (CRS) Cases for the Period of Weeks 01-46, 2013

Subregion and Country	Susp. Cases 2013	Measles Confirmed 2013			Year/Week Last Conf. Measles case	Rubella Confirmed 2013			Year/Week Last Conf. Rubella Case	Diagnosis of Discarded Cases 2013		Congenital Rubella Syndrome			Year/Week Last Conf. CRS Case	
		Clin.	Lab.	Total		Clin.	Lab.	Total		Dengue	Others	Susp.	Conf.	CR1*		
AND	BOL	136	0	0	0	2000/40	0	0	0	2006/03	1	131	22	...	...	...
	COL	1898	0	1	1	2013/25	0	0	0	2012/42	8	1818	281	0	0	2005/34
	ECU	...	...	...	...	2012/28	...	...	...	2004/45	...	...	...	...	...	...
	PER	345	0	0	0	2008/18	0	0	0	2006/45	0	313	0	...	...	2007/16
BRA	VEN	283	0	0	0	2012/16	0	0	0	2007/51	23	121	1	0	0	...
	BRA	4393	0	130	130	2013/45	0	0	0	2009/41	0	3749	115	0	0	2009/34
	CAP	23	0	0	0	2005/22	0	0	0	2001/42	3	17	0	0	...	...
	GTM	232	0	0	0	1998/05	0	0	0	2006/30	58	165	5	0	0	2005/00
	HND	137	0	0	0	1997/29	0	0	0	2004/11	83	46	64	0	0	2001/00
	NIC	152	0	0	0	1994/14	0	0	0	2004/19	5	117	27	0	...	2005/00
	PAN	139	0	0	0	2011/20	0	0	0	2002/48	0	130	2	0	...	...
	SLV	319	0	0	0	2001/19	0	0	0	2006/30	...	...	91	0	0	2001/00
	CAR	302	0	0	0	2011/48	0	0	0	2008/18	0	211	0	...	...	1999/00
	LAC	CUB	984	0	0	0	1993/27	0	0	0	2004/06	0	984	0	0	...
	DOM	62	0	0	0	2011/18	0	0	0	2006/44	0	41	0	...	...	...
	GLP	2	0	0	0	2011/28	0	0	0	...	0	0	0	...	...	2005/00
	GUF	1	0	0	0	2011/26	0	0	0	2010/06	0	0	0	...	...	...
	HTI	345	0	0	0	2001/39	0	0	0	2006/21	0	252	47	0	...	...
	MTQ	0	0	0	0	2011/27	0	0	0	...	0	0	0	...	...	...
	PRI	...	...	...	...	...	...	...	...	...	...	...	...	...	...	...
MEX	MEX	4549	0	0	0	2011/12	0	0	0	2012/49	0	4528	0	0	...	...
NOA	CAN	...	...	72	72 <sup>a</sup>	2013/46	0	1	1	2013/15	0	0	0	0	...	2011/12
	USA	...	...	172	172 <sup>a</sup>	2013/34	0	6	6	2013/04	0	0	0	0	...	2012/44
SOC	ARG	271	0	0	0	2012/20	0	0	0	2011/20	1	188	81	...	...	2009/27
	CHL	135	0	0	0	2011/25	0	0	0	2011/25	0	123	114	0	0	...
	PRY	425	0	0	0	1998/44	0	0	0	2005/21	142	267	2	0	0	2003/06
	URY	0	0	0	0	1999/08	0	0	0	2001/37	0	0	0	0	0	...
<b>TOTAL</b>	<b>15133</b>	<b>0</b>	<b>375</b>	<b>375</b>	<b>--</b>	<b>0</b>	<b>7</b>	<b>7</b>	<b>--</b>	<b>324</b>	<b>13201</b>	<b>852</b>	<b>0</b>	<b>0</b>	<b>0</b>	<b>--</b>

\*Congenital Rubella Infection; (a) Provisional data;

...No report received



# Measles/Rubella Surveillance

**Table No.2**  
Infection Source of Measles and Rubella Confirmed Cases for the Period of Weeks 01-46, 2013

Subregion and Country	Measles				Rubella			
	I	IR	CAC	U	I	IR	CAC	U
AND								
BOL	1							
COL								
ECU								
PER								
VEN				121				
BRA	4	5						
CAP								
CRI								
GTM								
HND								
NIC								
PAN								
SLV								
CAR								
LAC								
CAR								
CUB								
DOM								
GLP								
GUF								
HTI								
MTQ								
PRI								
MEX								
NOA	10	55		7	1			
CAN	55	114		3	4			2
USA								
SOC								
ARG								
CHL								
PRY								
URY								
<b>TOTAL</b>	<b>70</b>	<b>174</b>		<b>131</b>	<b>5</b>			<b>2</b>

**Table No.3**  
Measles/Rubella Suspect Cases Under Investigation for the Period of Weeks 01-46, 2013

Country	Pending Cases 2012	Cumulative 2013	Week of Onset							% Pend.Cases
			1-41	42	43	44	45	46		
BOL	1	4	3	1	0	0	0	0	3	
COL	0	70	55	6	4	5	0	0	4	
ECU	0	...	...	...	...	...	...	...	...	
PER	0	32	20	3	2	6	1	0	9	
VEN	0	132	125	2	3	1	1	0	47	
BRA	0	514	...	...	...	...	...	...	12	
CRI	0	3	3	0	0	0	0	0	13	
GTM	0	9	9	0	0	0	0	0	4	
HND	0	0	0	0	0	0	0	0	0	
NIC	0	30	30	0	0	0	...	...	20	
PAN	0	9	7	0	2	0	0	0	6	
SLV	0	275	275	0	0	0	0	0	100	
CAR	0	90	81	8	1	0	0	0	30	
CUB	0	0	0	0	0	0	0	0	0	
DOM	0	21	21	0	0	0	0	0	34	
GLP	0	0	0	0	0	0	0	0	0	
GUF	0	0	0	0	0	0	0	0	0	
HTI	0	93	85	1	2	5	0	0	27	
MTQ	0	0	0	0	0	0	0	0	0	
PRI	...	...	...	...	...	...	...	...	...	
MEX	0	21	20	0	0	1	0	0	0	
CAN	...	...	...	...	...	...	...	...	...	
USA	...	...	...	...	...	...	...	...	...	
ARG	247	80	62	6	11	1	0	...	30	
CHL	0	12	3	1	0	2	5	1	9	
PRY	1	16	16	0	0	0	0	0	4	
URY	0	0	0	...	...	...	...	...	0	
<b>TOTAL</b>	<b>249</b>	<b>1411</b>	<b>815</b>	<b>28</b>	<b>25</b>	<b>21</b>	<b>7</b>	<b>1</b>	<b>9</b>	

I: Imported; IR: Import-related; CAC: Country-acquired case  
U: Unknown.

... No report received

**Table 4.**  
Indicators of Integrated Measles/Rubella Surveillance for the Period of Weeks 01-46, 2013

Subregion and Country	Sites Reporting Weekly		% Cases with Adequate Investigation	% Cases with Adequate Sample	% Blood Samples Received in Lab. ≤5 days	% Lab. Results ≤4 days	Rate of Suspected Cases Last 52 weeks (2012/47-2013/46)		
	Total Units	% This Week					Measles/Rubella (100,000 pop.)	CRS (10,000 lb)	
AND	BOL	2887	0	99	99	81	88	1.6	0.8
	COL	5029	...	77	95	90	96	4.7	3.5
	ECU	2184	...	...	...	...	...	...	...
	PER	7325	...	90	96	75	49	1.4	0.0
	VEN	13092	...	76	85	18	14	1.0	0.0
BRA	BRA	12801	86	99	...	...	...	0.3	0.4
CAP	CRI	57	...	30	74	74	61	0.6	0.0
	GTM	1506	...	1	93	71	83	1.8	0.1
	HND	469	94	38	96	72	98	1.9	3.7
	NIC	185	...	91	99	87	86	2.8	2.0
	PAN	222	...	83	97	69	91	4.4	0.3
	SLV	1206	...	80	93	72	67	4.6	7.2
CAR	CAR	719	...	14	21	27	80	4.7	0.0
LAC	CUB	150	100	100	100	100	100	10.0	0.0
	DOM	252	...	6	98	67	61	0.8	0.0
	GLP	...	...	...	...	...	...	0.4	...
	GUF	...	...	...	...	...	...	0.4	...
	HTI	105	87	90	99	86	79	3.5	1.8
	MTQ	...	...	...	...	...	...	0.0	...
	PRI	...	...	...	...	...	...	0.0	...
MEX	MEX	11138	...	98	0	0	0	4.3	0.0
NOA	CAN	...	...	...	...	...	...	...	...
	USA	...	...	...	...	...	...	...	...
SOC	ARG	779	...	13	91	67	48	0.7	2.3
	CHL	958	62	52	87	93	94	0.9	4.6
	PRY	929	62	81	94	95	89	8.1	0.1
	URY	155	...	0	0	0	0	0.0	0.0
<b>Total and Average*</b>		<b>62148</b>	<b>85</b>	<b>88</b>	<b>92</b>	<b>80</b>	<b>83</b>	<b>2.2</b>	<b>1.0</b>

\*Weighted

... No report received