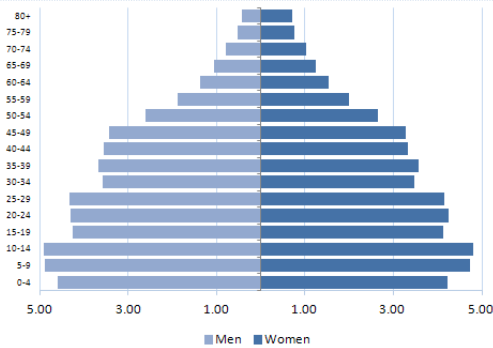


# SURINAME

## SOCIODEMOGRAPHIC INDICATORS<sup>1</sup>



- **Total population:** 529,400
- **Average annual deaths:** 3,800
- **Life expectancy at birth (years):**  
Total: 71 Male: 68 Female: 74
- **Adult literacy rate:** 94.6%
- **Gross national income US\$ per capita:** 4,760

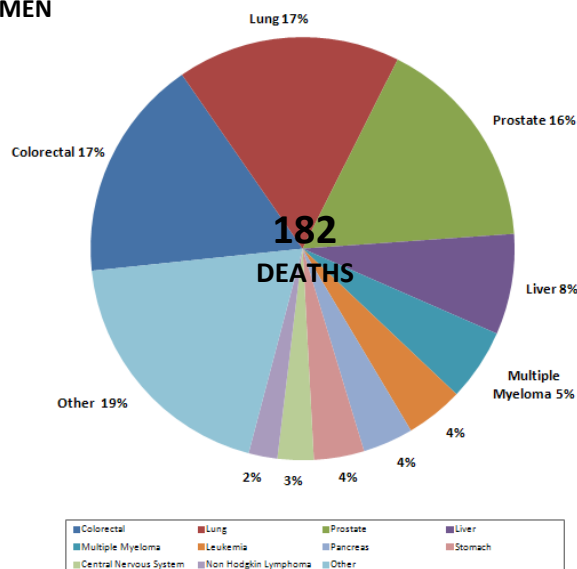
## RISK FACTORS

Prevalence of:	Total (%)	Male (%)	Female (%)
Current tobacco smokers among adults <sup>2,a</sup>	...	38.4	9.9
Current use of any tobacco product among youth <sup>3</sup>	19.2	20.7	16.6
Fruit and vegetable intake in adults <sup>1,b</sup>	...	...	...
Alcohol consumers, past 12 months <sup>4</sup>	...	...	...
Low physical activity in adults <sup>1,c</sup>	...	...	...
Obesity among adults (BMI $\geq 30$ ) <sup>1</sup>	25.8	16.5	34.6
HPV prevalence (women with normal cytology) <sup>5</sup>	...	...	...

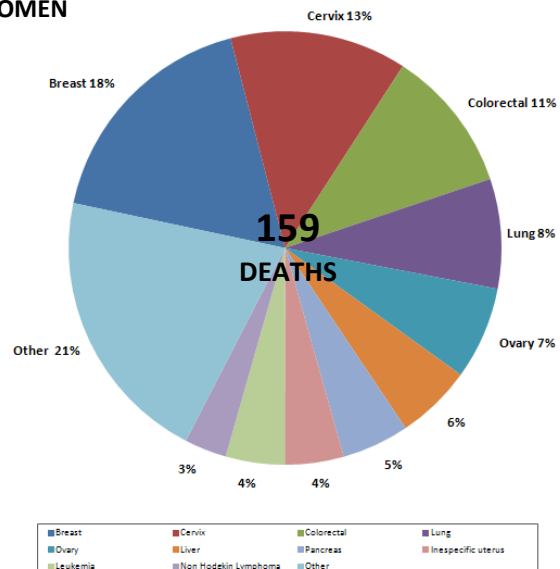
Notes: a: adults aged 12-65 years; b: % who eat 5 or more servings of fruit and vegetables per day; c: % who are physically active for <600 met minutes; BMI: Body Mass Index; HPV: Human Papillomavirus.

## CANCER MORTALITY PROFILE (2009)<sup>6</sup>

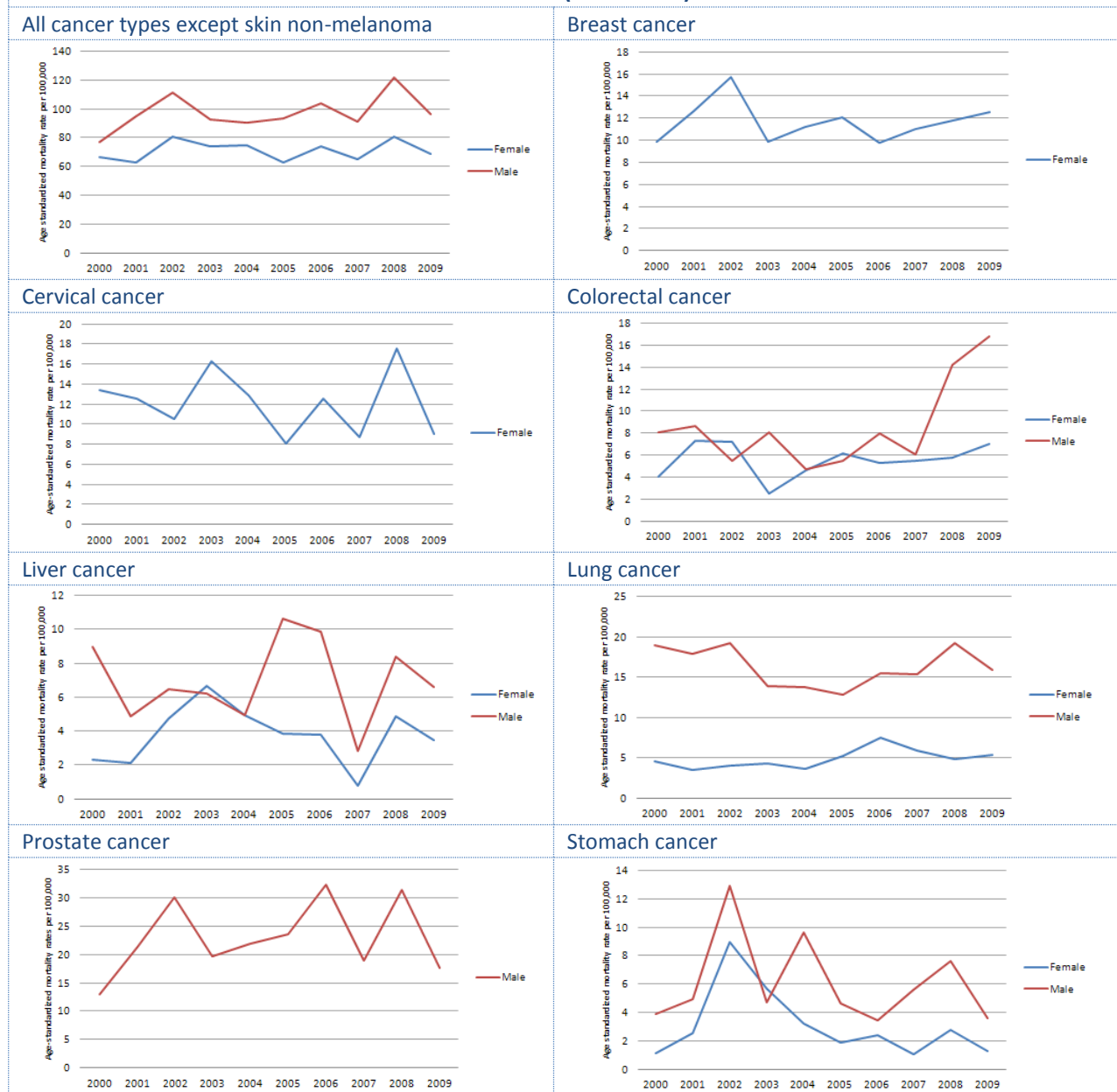
### MEN



### WOMEN



## AGE-STANDARDIZED CANCER MORTALITY TRENDS (2000-2009)<sup>6</sup>



**Average annual percent change (AAPC) of age-standardized mortality rates, by cancer type (2000-2009)<sup>6</sup>**

Cancer type	Sex	Number of deaths (2009)	ASMR (2009)	AAPC
All cancer types	Male	182	96.69	1.89
	Female	159	68.99	0.48
Breast cancer		28	12.53	-
Cervical cancer		21	8.99	-
Colorectal cancer	Male	31	17.16	-
	Female	17	7.40	-
Liver cancer	Male	14	7.03	-
	Female	9	3.89	-
Lung cancer	Male	31	16.26	-
	Female	13	5.77	-
Prostate cancer		30	17.56	-
Stomach cancer	Male	7	3.97	-
	Female	4	1.69	-

Notes: ASMR: Age-standardized mortality rate; AAPC: Average annual percent change; \*: The AAPC is significantly different from zero at p=0.05.

## CANCER PLANS AND CANCER REGISTRATION<sup>7</sup>

<b>National integrated NCD policy, strategy or action plan</b>	
Is there a national integrated NCD policy, strategy or action plan?	Yes
Is cancer included in the overall NCD plan?	Yes
First year of implementation	2012
<b>Cancer policy, strategy or action plan</b>	
Is there a cancer policy, strategy or action plan?	Not in effect
First year of implementation	N/A
<b>Cancer registry</b>	
Is there a cancer registry?	Yes
Scope (national vs. subnational)?	National
Type of registry (population vs. hospital based)?	Other
Last year with available data	2012

## CANCER PRIMARY PREVENTION POLICIES

<b>Tobacco control<sup>3</sup></b>	
Smoke free environments?	All public spaces are completely smoke free
Raised taxes on tobacco?	Taxes are 61% of the final price
Health warning labels about the dangers of tobacco?	Large warnings with all appropriate features (pending regulation and/or implementation)
Bans on tobacco advertising, promotion and sponsorship?	Ban on all forms of direct and indirect advertising
<b>Overweight and obesity prevention and control<sup>7</sup></b>	
Is there a policy, strategy or action plan for reducing overweight/obesity? (First year of implementation)	No
<b>Harmful use of alcohol prevention and control<sup>7</sup></b>	
Is there a policy, strategy or action plan for reducing harmful use of alcohol? (First year of implementation)	No
<b>HPV vaccination in national immunization program?<sup>8</sup></b>	
Year of introduction/target age group/delivery strategy	2013/.../...
Estimated 3-dose coverage (calendar year)	...
<b>HBV vaccination in national immunization program?<sup>8</sup></b>	
Year of introduction/target age group	2003/newborn-2m-4m-6m; risk groups
Estimated 3-dose coverage (2012)	84%

## CANCER SCREENING

<b>Cervical cancer</b>	
<b>Guidelines<sup>9</sup></b>	
Are there cervical cancer screening guidelines available?	Yes
Guideline recommendations (tests/age groups/frequency)	Pap test/postmenopausal women/every 2 years VIA/23-55 years of age/every 2 years
<b>Availability and coverage of screening services</b>	
<b>Cervical cytology<sup>7</sup></b>	Generally available in the public and the private sectors
<b>Visual inspection with acetic acid<sup>7</sup></b>	Generally available in the public and the private sectors
<b>Screening coverage<sup>9</sup></b>	<15% of target population

CANCER SCREENING	
<b>Breast cancer</b>	
<b>Guidelines</b>	
Are there breast cancer screening guidelines available?	...
Guideline recommendations (tests/age groups/frequency)	...
<b>Availability and coverage of screening services</b>	
<b>Clinical breast examination<sup>7</sup></b>	Generally available in the public and the private sectors
<b>Mammography<sup>7</sup></b>	Generally available in the public and the private sectors
<b>Screening coverage</b>	...
<b>Colorectal cancer</b>	
<b>Guidelines</b>	
Are there colorectal cancer screening guidelines available?	...
Guideline recommendations (tests/age groups/frequency)	...
<b>Availability and coverage of screening services</b>	
<b>Fecal occult blood test or fecal immunological test<sup>7</sup></b>	Generally available in the public and the private sectors
<b>Exam or colonoscopy<sup>7</sup></b>	Generally available in the public and the private sectors
<b>Screening coverage</b>	...

CANCER TREATMENT AND PALLIATIVE CARE			
<b>Radiotherapy<sup>10</sup></b>		<b>Oral morphine<sup>7</sup></b>	
Availability of services in the public health sector? <sup>7</sup>	Generally available	Availability in the public health sector?	Generally available
Total energy teletherapy units/million inhabitants	1.9	Covered by health insurance or publically funded?	Yes
Total radiotherapy centers	1	Appears in the national list of essential medicines?	Yes
Radiation oncologists	...	<b>Opioid consumption<sup>11</sup></b>	
Medical physicists	...	Total morphine equivalence, per capita	...
<b>Chemotherapy<sup>7</sup></b>		<b>Community/home care<sup>7</sup></b>	
Availability of services in the public health sector?	Generally available	Are community/home care services available in the public sector for people with advanced stages of NCDs?	Generally available

Notes: ...: Information not available; N/A: Not applicable; m: months.

Sources:

- (1) PAHO/WHO. Non communicable Diseases in the Americas: Basic Health Indicators 2011. Washington D.C, USA, 2011.
- (2) WHO Report on the Global Tobacco Epidemic, 2013, retrieved August 28, 2013 from <http://www.who.int/tobacco>
- (3) PAHO/WHO. Tobacco Control Report for the Region of the Americas, 2013. Washington D.C, USA, 2013.
- (4) WHO. Global Information System on Alcohol and Health, retrieved August 28, 2013, from <http://bit.ly/17zhugZ>.
- (5) ICO. Information Center on HPV and Cancer, retrieved August 28, 2013, from <http://www.hpvcentre.net/>.
- (6) PAHO/WHO Mortality Database, 2012.
- (7) PAHO/WHO Survey on National Capacity for the Prevention and Control of Non-communicable Diseases, 2013.
- (8) PAHO/WHO Comprehensive Family Immunization Unit. Immunization Country Profiles, retrieved August 28, 2013, from <http://bit.ly/1dn4Td3>; Immunization Reported Coverage in the Americas, by vaccine, retrieved August 28, 2013 from <http://bit.ly/1dn59ZK>
- (9) PAHO/WHO Survey of Caribbean Cervical Cancer Program Managers, 2013. unpublished
- (10) WHO/IAEA Directory of Radiotherapy Centers (DIRAC) Database, retrieved August 28, 2013 from <http://www.naweb.iaea.org/nahu/dirac/>.
- (11) University of Wisconsin. WHO Collaborating Centre for Pain Policy and Palliative Care, Opioid Consumption Database 2010, retrieved August 28, 2013, from <http://www.painpolicy.wisc.edu/countryprofiles/amro>.