



## Rate of Suspect Congenital Rubella Syndrome (CRS) Region of the Americas, 2010-2012\*

Since 2009, PAHO has urged countries of the Americas to monitor Congenital Rubella Syndrome (CRS) surveillance quality indicators. One of these 5 indicators includes an annual reporting rate of  $\geq 1$  suspected CRS cases per 10,000 live births.

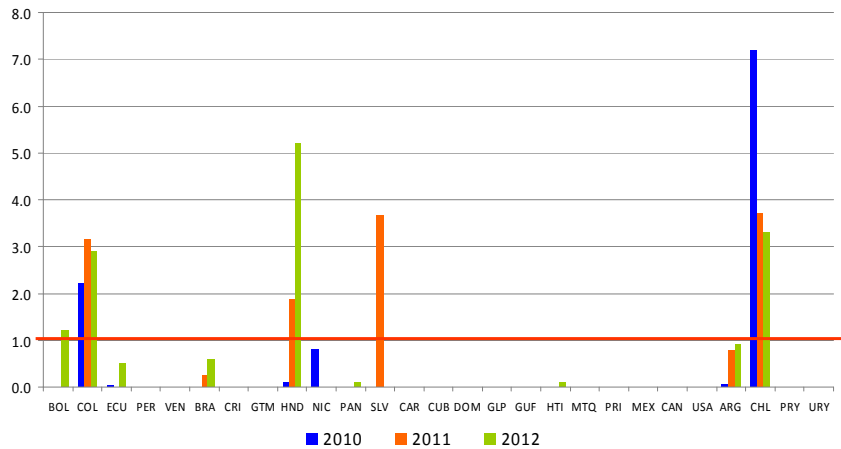


Table.1

Classification of Suspect Measles, Rubella, and Congenital Rubella Syndrome (CRS) Cases for the Period of Weeks 01-43, 2012

Subregion and Country	Susp. Cases 2012	Measles Confirmed 2012			Year/Week Last Conf. Measles case	Rubella Confirmed 2012			Year/Week Last Conf. Rubella Case	Diagnosis of Discarded Cases 2012		Congenital Rubella Syndrome			Year/Week Last Conf. CRS Case		
		Clin.	Lab.	Total		Clin.	Lab.	Total		Dengue	Others	Susp.	Conf.	CRI*			
AND	BOL	166	0	0	0	2000/40	...	...	...	2006/03	30	130	10	...	...	...	
	COL	1974	0	1	1	2012/05	0	2	2	2012/42	4	1884	198	0	0	2005/34	
	ECU	1435	0	68	68	2012/28	...	...	...	2004/45	18	86	14	0	...	...	
	PER	320	0	0	0	2008/18	0	0	0	2006/45	0	307	0	...	...	2007/16	
	VEN	544	0	1	1	2012/16	0	0	0	2007/51	38	390	0	0	0	...	
BRA	BRA	4363	0	1	1	2012/02	0	0	0	2009/41	0	3902	111	0	...	2009/34	
	CRI	20	0	0	0	2005/22	0	0	0	2001/42	1	17	0	0	0	...	
	GTM	344	0	0	0	1998/05	0	0	0	2006/30	56	280	0	0	0	2005/00	
	HND	84	0	0	0	1997/29	0	0	0	2004/11	15	60	100	0	0	2001/00	
	NIC	114	0	0	0	1994/14	0	0	0	2004/19	1	106	0	0	0	2005/00	
CAR	PAN	85	0	0	0	2011/20	0	0	0	2002/48	1	84	1	0	0	...	
	SLV	292	0	0	0	2001/19	0	0	0	2006/30	0	292	0	...	...	2001/00	
	CAR	471	0	0	0	2011/48	0	0	0	2008/18	0	401	0	0	0	1999/00	
	LAC	CUB	1020	0	0	0	1993/27	0	0	0	2004/06	0	1020	0	0	0	...
	DOM	101	0	0	0	2011/18	0	0	0	2006/44	2	96	0	...	...	...	
	GLP	3	0	0	0	2012/10	0	0	0	...	0	3	0	0	0	2005/00	
	GUF	13	0	0	0	2011/26	0	0	0	2010/06	4	9	0	0	0	...	
	HTI	126	0	0	0	2001/39	0	0	0	2006/47	0	0	3	0	0	...	
	MTQ	2	0	0	0	2011/27	0	0	0	...	0	2	0	0	0	...	
	PRI	...	...	...	...	...	...	...	...	...	0	0	0	...	...	...	
MEX	MEX	3888	0	0	0	2011/12	0	0	0	2008/20	0	3775	0	0	0	...	
	NOA	CAN	...	...	9	9	2012/40	0	2	2	2012/03	0	0	0	0	0	...
	USA	...	...	53	53 <sup>a</sup>	2012/38	0	7	7	2012/34	0	0	0	2	0	...	
SOC	ARG	164	0	1	1	2012/20	0	0	0	2011/20	0	27	29	0	0	2009/27	
	CHL	148	0	0	0	2011/25	0	0	0	2011/25	0	146	81	0	0	...	
	PRY	548	0	0	0	1998/44	0	0	0	2005/21	30	516	0	0	0	2003/06	
	URY	3	0	0	0	1999/08	0	0	0	2001/37	0	3	0	0	0	...	
<b>TOTAL</b>	<b>16228</b>	<b>0</b>	<b>134</b>	<b>134</b>	<b>--</b>	<b>0</b>	<b>11</b>	<b>11</b>	<b>--</b>	<b>200</b>	<b>13536</b>	<b>547</b>	<b>2</b>	<b>0</b>	<b>--</b>		

\*Congenital Rubella Infection; (a) Provisional data;

...No report received



# Measles / Rubella Surveillance

Table No.2

Infection Source of Measles and Rubella Confirmed Cases for the Period of Weeks 01-43, 2012

Subregion and Country	Measles				Rubella			
	I	IR	CAC	U	I	IR	CAC	U
AND								
BOL								
COL	1							2
ECU		68						
PER								
VEN	1							
BRA	1							
CAP								
CRI								
GTM								
HND								
NIC								
PAN								
SLV								
CAR								
LAC								
CUB								
DOM								
GLP								
GUF								
HTI								
MTQ								
PRI								
MEX								
NOA								
CAN	7			2	2			
USA	24	24		5	1			6
SOC								
ARG	1							
CHL								
PRY								
URY								
<b>TOTAL</b>	<b>35</b>	<b>92</b>		<b>7</b>	<b>3</b>			<b>8</b>

I: Imported; IR: Import-related; CAC: Country-acquired case  
U: Unknown.

Table No.3

Measles/Rubella Suspect Cases Under Investigation for the Period of Weeks 01-43, 2012

Country	Pending Cases 2011	Cumulative 2012	Week of Onset							% Pend.Cases
			1-38	39	40	41	42	43		
BOL	1	6	6	0	0	0	0	0	0	4
COL	0	83	69	7	2	4	1	0	0	4
ECU	41	78	289	71	5	2	...	...	...	5
PER	0	13	13	...	...	...	...	...	...	4
VEN	1	115	115	0	0	0	0	0	0	21
BRA	72	461	324	44	41	27	25	...	...	11
CRI	0	2	2	0	0	0	...	...	...	10
GTM	0	8	5	0	2	1	0	0	0	2
HND	0	1	0	0	0	0	1	0	0	1
NIC	0	6	5	0	0	1	0	0	0	5
PAN	6	0	0	0	0	0	0	0	0	0
SLV	0	0	0	0	0	0	...	...	...	0
CAR	0	69	38	6	19	6	0	0	0	15
CUB	0	0	0	0	0	0	0	0	0	0
DOM	0	3	2	1	0	0	0	...	...	3
GLP	0	0	0	0	0	0	0	0	0	0
GUF	0	0	0	0	0	0	0	0	0	0
HTI	0	126	122	0	2	1	1	0	0	100
MTQ	0	0	0	0	0	0	0	0	0	0
PRI	...	...	...	...	...	...	...	...	...	...
MEX	0	113	101	5	2	2	2	1	0	3
CAN	...	...	...	...	...	...	...	...	...	...
USA	...	...	...	...	...	...	...	...	...	...
ARG	247	136	134	0	1	1	0	0	0	83
CHL	0	2	0	0	1	1	0	0	0	1
PRY	0	2	1	0	0	0	1	0	0	0
URY	4	0	0	0	0	0	0	0	0	0
<b>TOTAL</b>	<b>372</b>	<b>1224</b>	<b>1226</b>	<b>134</b>	<b>75</b>	<b>46</b>	<b>31</b>	<b>1</b>	<b>8</b>	<b>8</b>

... No report received

Table 4.

Indicators of Integrated Measles/Rubella Surveillance for the Period of Weeks 01-43, 2012

Subregion and Country	Sites Reporting Weekly		% Cases with Adequate Investigation	% Cases with Adequate Sample	% Blood Samples Received in Lab. ≤5 days	% Lab. Results ≤4 days	Rate of Suspected Cases Last 52 weeks (2011/44-2012/43)	
	Total Units	% This Week					Measles/Rubella (100,000 pop.)	CRS (10,000 lb)
AND								
BOL	...	...	100	99	74	98	2.3	1.2
COL	5024	97	76	95	92	96	5.8	2.9
ECU	2184	...	54	98	91	74	5.0	0.5
PER	...	...	73	87	81	62	1.9	0.0
VEN	13092	0	64	96	10	9	2.2	0.0
BRA								
BRA	270	84	74	...	...	...	2.9	0.6
CAP								
CRI	57	...	10	90	90	55	0.5	0.0
GTM	1506	0	11	97	72	87	2.6	0.0
HND	469	94	56	100	79	88	1.4	5.2
NIC	185	184	93	100	86	96	2.4	0.0
PAN	215	92	48	94	79	87	3.0	0.1
SLV	893	...	56	99	75	77	5.7	0.0
CAR								
CAR	752	...	86	95	28	95	7.4	0.0
LAC								
CUB	150	100	100	100	100	100	11.2	0.0
DOM	0	0	54	98	70	71	1.2	0.0
GLP	...	...	...	...	...	...	0.7	...
GUF	...	...	...	...	...	...	5.8	...
HTI	78	85	17	91	46	1	1.3	0.1
MTQ	...	...	...	...	...	...	0.5	...
PRI	...	...	...	...	...	...	...	...
MEX								
MEX	11138	0	98	0	0	0	4.2	0.0
NOA								
CAN	...	...	...	...	...	...	...	...
USA	...	...	...	...	...	...	...	...
SOC								
ARG	779	0	10	91	66	45	0.5	0.9
CHL	94	100	76	98	86	90	1.2	3.3
PRY	861	92	76	97	96	99	10.6	0.0
URY	155	0	0	100	100	67	0.9	0.0
<b>Total and Average*</b>	<b>37902</b>	<b>89</b>	<b>77</b>	<b>96</b>	<b>79</b>	<b>81</b>	<b>2.1</b>	<b>0.7</b>

\*Weighted

... No report received