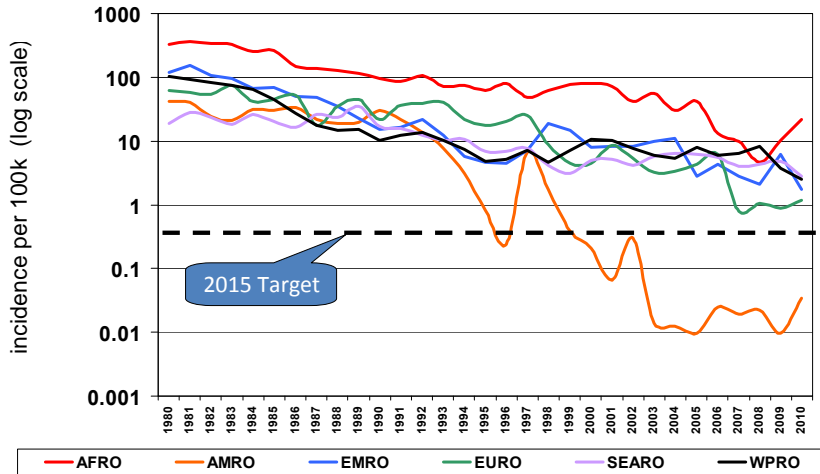




## Reported measles incidence by WHO region, 1980-2010



In May 2010, the World Health Assembly (WHA) initiated three targets by 2015 that would contribute to the eventual elimination of measles virus. The following targets consisted of: 1) reducing measles deaths by 95% compared to 2000 levels; 2) exceeding 90% coverage nationally with the first dose of measles-containing vaccine (MCV1) and exceeding 80% coverage in every district; and 3) reducing and maintaining annual measles incidence to less than five cases per million. Progress has been made during the past few years in global measles control; however, the Americas is the only WHO Region, that has already achieved the WHA's 2015 measles objectives. Therefore, the key challenge for the Americas is to maintain the elimination of the endemic measles in the Region - until the other regions of the world have eliminated measles virus circulation in their territories, the risk of re-introduction in the Americas is real.

**Table.1**  
Classification of Suspect Measles, Rubella, and Congenital Rubella Syndrome (CRS) Cases for the Period of Weeks 01-12, 2012

Subregion and Country	Susp. Cases 2012	Measles Confirmed 2012			Year/Week Last Conf. Measles case	Rubella Confirmed 2012			Year/Week Last Conf. Rubella Case	Diagnosis of Discarded Cases 2012		Congenital Rubella Syndrome			Year/Week Last Conf. CRS Case	
		Clin.	Lab.	Total		Clin.	Lab.	Total		Dengue	Others	Susp.	Conf.	CR1*		
AND	BOL	40	0	0	0	2000/40	...	...	...	2006/03	0	35	0	...	...	...
	COL	249	0	0	0	2011/37	0	0	0	2009/18	0	212	21	0	0	2005/34
	ECU	357	0	47	47	2012/10	...	...	...	2004/45	14	74	0	...	...	...
	PER	114	0	0	0	2008/18	0	0	0	2006/45	0	96	0	...	...	2007/16
	VEN	90	0	0	0	2007/07	0	0	0	2007/51	11	60	0	0	0	...
BRA	BRA	891	0	1	1	2012/02	0	0	0	2009/41	0	657	18	...	...	2009/34
	CRI	6	0	0	0	2005/22	0	0	0	2001/42	0	0	0	0	0	...
CAP	GTM	81	0	0	0	1998/05	0	0	0	2006/30	8	62	0	0	0	2005/00
	HND	4	0	0	0	1997/29	0	0	0	2004/11	1	0	10	0	0	2002/00
	NIC	32	0	0	0	1994/14	0	0	0	2004/19	1	30	0	0	0	...
	PAN	25	0	0	0	2011/20	0	0	0	2002/48	0	20	0	0	0	...
CAR	SLV	102	0	0	0	2001/19	0	0	0	2006/30	0	102	0	...	...	2001/00
	CAR	74	0	0	0	2011/48	0	0	0	2008/18	0	0	0	0	0	1999/00
LAC	CUB	166	0	0	0	1993/27	0	0	0	2004/06	0	166	0	0	0	...
	DOM	25	0	0	0	2011/18	0	0	0	2006/44	0	17	0	...	...	...
	GLP	3	0	1	1	2012/10	0	0	0	...	0	2	0	0	0	2005/00
	GUF	5	0	0	0	2011/26	0	0	0	2010/06	1	4	0	0	0	...
	HTI	8	0	0	0	2001/39	0	0	0	2006/47	0	0	0	0	0	...
	MTQ	0	0	0	0	2011/27	0	0	0	...	0	0	0	0	0	...
	PRI	...	...	...	...	...	...	...	...	...	...	...	0	...	...	...
MEX	MEX	142	0	0	0	2011/12	0	0	0	2008/20	0	0	0	0	0	...
	NOA	...	0	1	1	2012/10	0	1	1	2012/03	0	0	0	0	0	...
SOC	USA	...	0	27	27 <sup>a</sup>	2012/07	0	0	0	2011/18	0	0	0	0	0	...
	ARG	27	0	0	0	2011/12	0	0	0	2011/20	0	0	10	0	0	2009/27
	CHL	39	0	0	0	2011/25	0	0	0	2011/25	0	37	0	0	0	...
	PRY	167	0	0	0	1998/44	0	0	0	2005/21	20	147	0	0	0	2005/00
	URY	0	0	0	0	1999/08	0	0	0	2001/37	0	0	0	0	0	...
<b>TOTAL</b>	<b>2647</b>	<b>0</b>	<b>77</b>	<b>77</b>	<b>--</b>	<b>0</b>	<b>1</b>	<b>1</b>	<b>--</b>	<b>56</b>	<b>1721</b>	<b>59</b>	<b>0</b>	<b>0</b>	<b>--</b>	

\*Congenital Rubella Infection; (a) Provisional data;

...No report received



# Measles / Rubella Surveillance

**Table No.2**  
Infection Source of Measles and Rubella Confirmed Cases for the Period of Weeks 01-12, 2012

Subregion and Country		Measles				Rubella			
		I	IR	CAC	U	I	IR	CAC	U
AND	BOL								
	COL								
	ECU		47						
	PER								
	VEN								
BRA	BRA				1				
	CAP								
	CRI								
	GTM								
	HND								
CAR	NIC								
	PAN								
	SLV								
	CAR								
	LAC								
MEX	CUB								
	DOM								
	GLP	1							
	GUF								
	HTI								
NOA	MTQ								
	PRI								
	MEX								
	CAN	1				1			
	USA	7	17		3				
SOC	ARG								
	CHL								
	PRY								
	URY								
TOTAL		9	64		4	1			

**Table No.3**  
Measles/Rubella Suspect Cases Under Investigation for the Period of Weeks 01-12, 2012

Country	Pending Cases 2011	Cumulative 2012	Week of Onset							% Pend.Cases
			1-7	8	9	10	11	12		
BOL	2	5	2	1	2	0	0	...	13	
COL	86	37	18	5	7	7	0	0	15	
ECU	55	255	189	37	25	0	1	3	71	
PER	21	18	9	4	1	4	0	0	16	
VEN	10	19	14	4	0	1	0	0	21	
BRA	150	233	127	21	37	27	21	...	26	
CRI	17	6	5	0	1	0	0	0	100	
GTM	14	11	7	1	2	1	0	0	14	
HND	0	1	1	0	0	0	0	0	25	
NIC	0	1	0	1	0	0	0	0	3	
PAN	6	5	2	1	0	1	1	0	20	
SLV	0	0	0	0	0	0	0	0	0	
CAR	0	74	72	0	0	1	1	0	100	
CUB	0	0	0	0	0	0	0	...	0	
DOM	0	8	6	2	0	0	0	0	32	
GLP	0	0	0	0	0	0	0	0	0	
GUF	0	0	0	0	0	0	0	0	0	
HTI	0	8	8	0	0	0	0	...	100	
MTQ	0	0	0	0	0	0	0	0	0	
PRI	...	...	...	...	...	...	...	...	...	
MEX	182	44	0	3	1	0	...	...	31	
CAN	...	...	...	...	...	...	...	...	...	
USA	...	...	...	...	...	...	...	...	...	
ARG	245	27	21	3	1	2	0	0	100	
CHL	1	2	0	0	0	2	0	...	5	
PRY	0	0	0	0	0	0	0	0	0	
URY	4	0	0	0	0	0	0	...	0	
TOTAL	793	754	481	83	77	46	24	3	28	

I: Imported; IR: Import-related; CAC: Country-acquired case  
U: Unknown.

... No report received

**Table 4.**  
Indicators of Integrated Measles/Rubella Surveillance for the Period of Weeks 01-12, 2012

Subregion and Country		Sites Reporting Weekly		% Cases with Adequate Investigation	% Cases with Adequate Sample	% Blood Samples Received in Lab. ≤5 days	% Lab. Results ≤4 days	Rate of Suspected Cases Last 52 weeks (2011/13-2012/12)	
		Total Units	% This Week					Measles/Rubella (100,000 pop.)	CRS (10,000 lb)
AND	BOL	...	...	60	58	77	95	2.4	0.9
	COL	4827	90	67	91	81	92	7.1	2.8
	ECU	2165	49	47	99	91	97	6.5	0.0
	PER	...	...	73	94	75	53	3.2	0.0
	VEN	3283	0	62	94	41	34	2.5	0.0
BRA	BRA	270	84	44	...	...	...	3.4	0.3
	CAP	57	0	0	100	100	67	0.5	0.0
	GTM	1506	0	4	99	77	91	2.2	3.8
	HND	469	93	75	100	100	75	1.0	0.2
	NIC	185	97	94	100	88	100	3.4	1.9
CAR	PAN	214	0	16	92	80	88	7.9	0.0
	SLV	893	0	45	99	88	75	8.6	0.0
	CAR	641	0	67	50	58	83	6.2	0.0
	LAC	CUB	150	...	100	100	100	9.9	0.0
	DOM	...	...	48	100	48	56	1.2	0.0
MEX	GLP	...	...	...	...	...	...	3.5	...
	GUF	...	...	...	...	...	...	9.7	...
	HTI	90	0	50	100	...	...	0.2	0.0
	MTQ	...	...	...	...	...	...	1.5	...
	PRI	...	...	...	...	...	...	0.0	...
NOA	MEX	11138	...	99	...	...	...	5.5	0.0
	CAN	...	...	...	...	...	...	0.0	...
	USA	...	...	...	...	...	...	0.0	...
SOC	ARG	779	0	11	78	62	5	0.7	0.9
	CHL	...	...	54	87	80	89	2.7	2.7
	PRY	791	94	50	98	97	99	9.6	0.0
	URY	155	0	0	0	0	0	1.5	0.0
Total and Average*		27613	83	55	93	83	85	2.5	0.5

\*Weighted

... No report received