

Community Management of Cholera - the experience of Haiti

11th Meeting of Caribbean National Epidemiologists and Laboratory Directors

CAREC 12 May 2011



Pan American
Health
Organization

Disinfection at community level



~~Information to family members~~
accompanying patient

Patient register

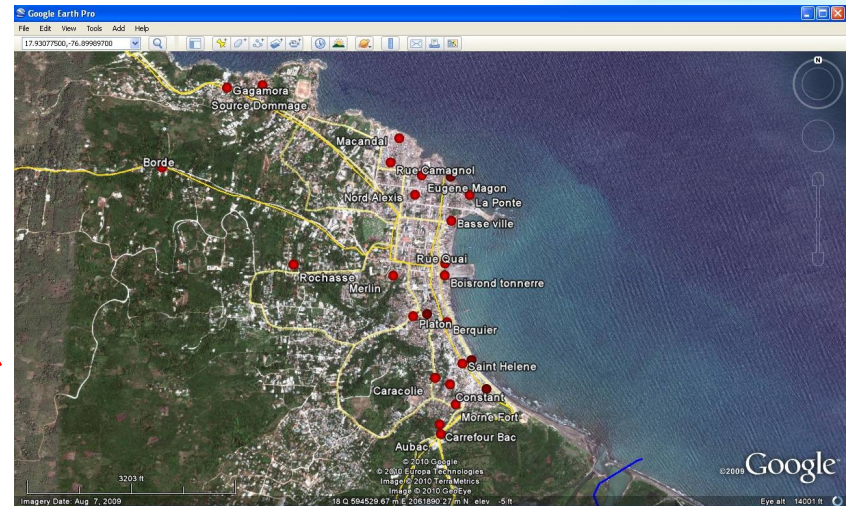
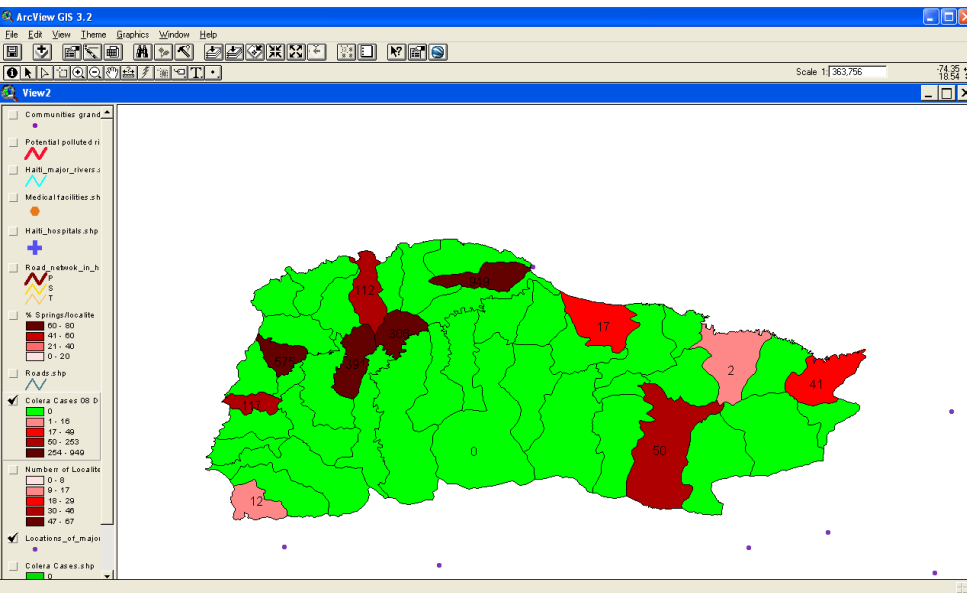


- Disinfection of patient houses
- Disinfection of houses of deceased
- Disinfection of patient transport vehicles
- Investigation of source of infection
 - Disinfection of water sources
 - Communication in markets
 - Food handler hygiene promotion

Investigation of source of infection

Map cases of Cholera

Cholera in Jeremie

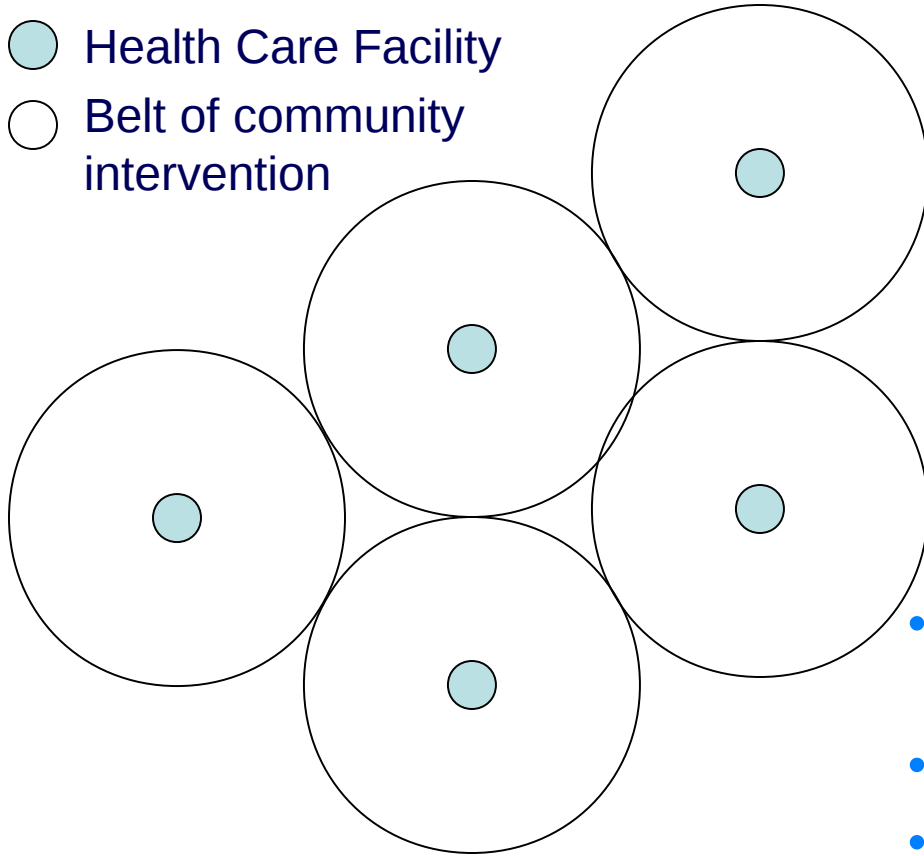


Rue Camagnol

Community Interventions

● Health Care Facility

○ Belt of community intervention



- Education and communication surrounding funeral rites
- Stigma
- Discharge package
- Household package distribution
- SSS vs. ORS
- Active surveillance brigades



Pan American
Health
Organization

Chlorine Solution Usage Sheet

Solution	Functions	Procedure	Observations
0.05% 500 ppm	Handwashing, Washing-up Showers	Rub hands with solution for 30 sec. Leave to soak in solution 10 min., rinse & wash with water and soap	Prepare solution daily
0.2% 2000 ppm	Disinfection of floors and surfaces, bathrooms, cleaning materials kitchens	Clean with soap and water then apply the solution, wait 10 mins, rinse and let dry	Prepare solution daily
2%	Disinfection of cadavers Management of vomit and excreta in a 10-15 litre bucket Disinfecting spilt liquids (transport, homes, ...)	Spray the solution directly onto corpse after plugging orifices with cotton wool soaked in 2% solution Pour solution 1-2 cm deep into buckets before use Add ½ cup at end and wait 10 mins before disposal Spray and wait 10 minutes Rinse with water and soap	This solution, kept in correct conditions, can last 5 days.

Thank you



Pan American
Health
Organization