



Measles in Ecuador, October 27, 2011. Confirmed Cases by Canton

The province most affected by the measles outbreak in Ecuador is Tungurahua, with an attack rate of 19.4 cases per 100,000 people. The confirmed cases reported in the provinces of Pichincha, Guayas, and Cotopaxi occurred during epidemiological weeks 39, 40, and 41; investigations indicate that these cases had history of travel or epidemiological link with the cases in Tungurahua. Ecuador continues to intensify vaccination activities throughout the country, initially targeting children aged less than 5 years followed by those aged 5 to < 15

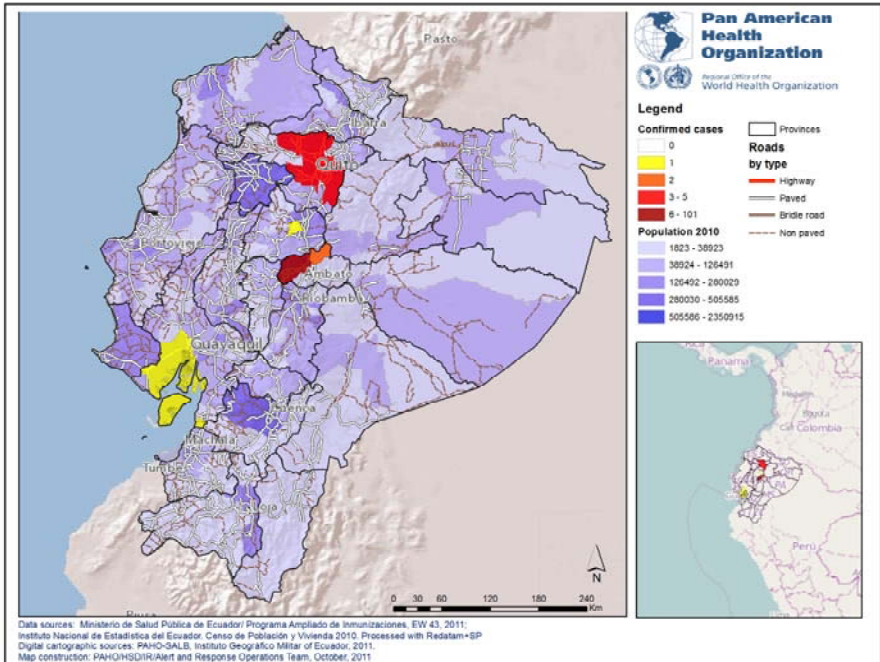


Table.1
Classification of Suspect Measles, Rubella, and Congenital Rubella Syndrome (CRS) Cases for the Period of Weeks 01-42, 2011

Subregion and Country	Susp. Cases 2011	Measles Confirmed 2011			Year/Week Last Conf. Measles case	Rubella Confirmed 2011			Year/Week Last Conf. Rubella Case	Diagnosis of Discarded Cases 2011		Congenital Rubella Syndrome			Year/Week Last Conf. CRS Case
		Clin.	Lab.	Total		Clin.	Lab.	Total		Dengue	Others	Susp.	Conf.	CR1*	
AND	BOL	144	0	0	0	0	0	0	06/03	2	139
	COL	1941	0	7	7	0	0	0	09/18	3	1811	215	0	...	2005/34
	ECU	604	39	71	110	0	0	0	04/45	51	378	0	0	0	...
	PER	515	0	0	0	0	0	0	06/45	2	477	2007/16
	VEN	465	0	0	0	0	0	0	07/52	58	376	0	0	0	...
BRA	BRA	6072	0	19	19	0	0	0	09/41	0	5364	39	0	0	2009/34
	COR	20	0	0	0	0	0	0	01/42	0	5	0	0	0	...
	ELS	288	0	0	0	0	0	0	06/30	4	284	46	0	0	2001/xx
	GUT	200	0	0	0	0	0	0	06/30	12	162	0	0	0	2005/00
	HON	61	0	0	0	0	0	0	04/11	4	54	27	0	0	...
CAR	NIC	159	0	0	0	0	0	0	04/19	0	151
	PAN	237	0	4	4	0	0	0	02/48	15	203	0	0	0	1999/xx
	CAR	295	0	0	0	0	0	0	08/18	0	0	0	0	0	...
	CUB	868	0	0	0	0	0	0	04/06	0	868	0	0	0	...
	DOR	96	0	1	1	0	0	0	06/44	0	75	0	0	0	...
LAC	FGU	20	0	5	5	10/06	3	12
	GUA	21	0	13	13 ^c	0	0	0	...	0	8	0	0	0	2005/00
	HAI	22	0	0	0	0	0	0	06/47	0	5	0	0	0	...
	MAR	10	...	3	3	0	7
	PUR
MEX	MEX	5672	0	3	3	0	0	0	08/20	0	5249
	CAN	...	77	709	786 ^a	0	1	1	11/25	1	1 ^b
	USA	220	220 ^a	0	4	4	11/18	0	0	0	...
SOC	ARG	190	0	3	3	0	1	1	09/05	0	27	49	0	0	...
	CHI	415	0	6	6	0	2	2	11/25	0	387	91	0	0	...
	PAR	429	0	0	0	0	0	0	05/21	5	423	0	0	0	...
	URU	13	0	0	0	0	0	0	01/37	0	10	0	0	0	...
TOTAL	18757	116	1064	1180	--	0	7	7	--	159	16475	468	1	0	--

... No report received; * Congenital Rubella Infection; (a) Provisional data; (b) imported;

(c) Five cases have been notified in the island of Saint Martin (1 import and 4 import-related), For the surveillance of vaccine-preventable diseases, Saint Martin reports cases to Guadeloupe's Regional Agency of Health.



Measles / Rubella Surveillance

Table No.2
Infection Source of Measles and Rubella Confirmed Cases for the Period of Weeks 01-42, 2011

Subregion and Country		Measles				Rubella			
		I	IR	CAC	U	I	IR	CAC	U
AND	BOL								
	COL	1	6						
	ECU	1	109						
	PER								
	VEN								
BRA	BRA	8	8		3				
	CAP								
	COR								
	ELS								
	GUT								
CAR	HON								
	NIC								
	PAN	4							
	CAR								
	CUB								
MEX	DOR	1							
	FGU	2	3						
	GUA	7	5		1				
	HAI								
	MAR	2			1				
NOA	PUR								
	MEX	3							
	CAN	17	25		744				1
SOC	USA	105	89		26	2	1		1
	ARG	1	2						
	CHI	3	3			1	1		
	PAR								
URU									
TOTAL		155	250	0	775	3	2		2

Table No.3
Measles/Rubella Suspect Cases Under Investigation for the Period of Weeks 01-42, 2011

Country	Pending Cases 2010	Cumulative 2011	Week of Onset							% Pend.Cases
			1-37	38	39	40	41	42		
BOL	0	3	3	2
COL	5	126	80	20	19	6	1	0	0	6
ECU	0	49	22	13	14	0	0	0	0	8
PER	0	34	34	7
VEN	0	31	27	3	1	0	0	0	0	7
BRA	0	689	458	62	69	54	46	11
COR	0	15	14	0	0	1	0	0	0	75
ELS	0	0	0	0	0	0	0	0	0	0
GUT	0	26	26	0	0	0	0	0	0	13
HON	0	0	0	0	0	0	0	0	0	0
NIC	0	8	8	0	0	0	0	0	0	5
PAN	0	15	12	1	0	1	1	0	0	6
CAR	0	295	286	9	0	0	0	0	0	100
CUB	0	0	0	0	0	0	0	0
DOR	4	19	18	1	0	0	0	0	0	20
FGU	0	0	0	0	0	0	0	0	0	0
GUA	0	0	0	0	0	0	0	0	0	0
HAI	0	7	6	1	0	0	0	0	0	32
MAR	0	0	0	0	0	0	0	0	0	0
PUR
MEX	0	0	0	0	0	0	0	0	0	0
CAN
USA
ARG	0	159	157	0	0	1	0	1	0	84
CHI	3	23	14	1	1	1	3	3	0	6
PAR	1	0	0	0	0	0	0	0	0	0
URU	2	2	2	0	0	0	0	0	0	15
TOTAL	15	1501	1167	111	104	64	51	4	8	8

I: Imported; IR: Import-related; CAC: Country-acquired case
U: Unknown.

... No report received

Table 4.
Indicators of Integrated Measles/Rubella Surveillance for the Period of Weeks 01-42, 2011

Subregion and Country		Sites Reporting Weekly		% Cases with Adequate Investigation	% Cases with Adequate Sample	% Blood Samples Received in Lab. ≤5 days	% Lab. Results ≤4 days	Rate of Suspected Cases Last 52 weeks (2010/43-2011/42)	
		Total Units	% This Week					Measles/Rubella (100,000 pop.)	CRS (10,000 lb)
AND	BOL	0	...	99	99	92	91	1.7	0.0
	COL	0	0	72	93	92	94	5.5	2.3
	ECU ^a	1773	17	73	99	84	64	5.5	0.0
	PER	0	...	76	97	75	73	2.4	0.0
	VEN ^a	3283	0	70	96	83	56	1.9	0.0
BRA	BRA	270	81	25	...	99	...	3.1	0.0
	CAP	57	0	35	90	78	50	0.6	0.0
	ELS ^a	256	0	66	100	95	76	5.1	3.8
	GUT ^a	1506	95	95	98	98	86	1.7	0.0
	HON ^a	469	95	57	100	100	93	0.9	1.4
CAR	NIC	185	100	88	96	87	88	3.0	0.0
	PAN ^a	214	77	46	92	93	90	7.1	0.0
	CAR ^a	130	0	75	93	97	94	4.0	0.0
	LAC	150	...	100	100	100	100	0.0	0.0
	DOR	6	0	47	89	69	54	1.2	0.0
MEX	FGU	0	8.9	...
	GUA	0	4.5	...
	HAI	90	0	0.0	0.0
	MAR	0	2.5	...
	PUR	0
NOA	MEX	11138	0	98	5.2	0.0
	CAN
	USA
SOC	ARG ^a	695	0	11	62	63	43	0.5	0.7
	CHI	518	100	20	83	80	98	3.0	0.9
	PAR ^a	622	0	51	100	88	83	6.8	0.0
	URU ^a	155	0	8	15	50	0	0.4	0.0
Total and Average		21517	78	65	94	87	82	3.3	0.3

... No report received

(a) Countries using ISIS