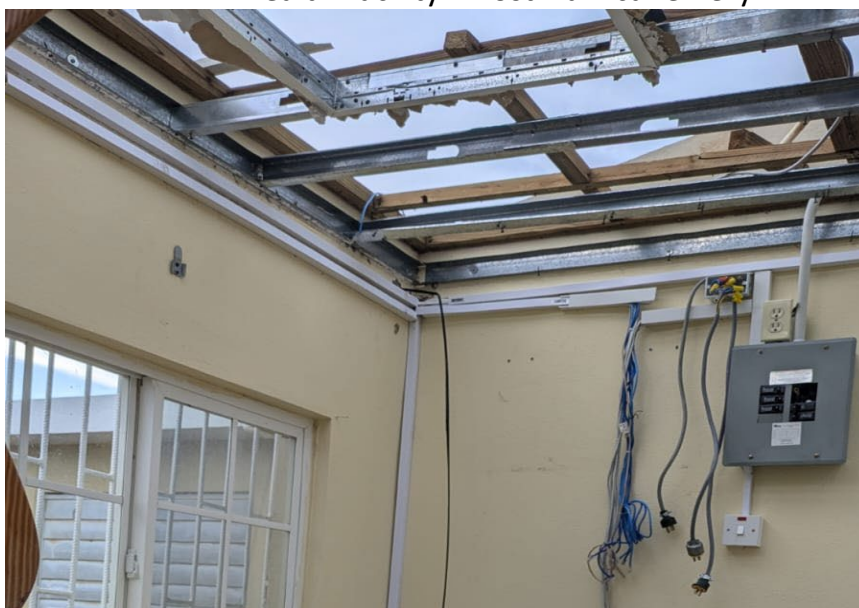


HIGHLIGHTS

- On 10 July 2024, all hospitals remained functional with 19 offering full services and 5 emergency services only.
- Vaccination services are being offered at all operational sites islandwide.
- Seven shelters remain open in five parishes with fifty-three occupants.
- Detailed assessment of the impact of Hurricane Beryl is being undertaken using the Post Disaster Rapid Infrastructure Assessment Tool; sixty-four facilities have been assessed with roof damage and twenty-eight with damage to windows.



Health Facility – Post Hurricane Beryl



IN NUMBERS

2.8m

**Potentially
exposed¹**

04 Deaths²

72 Injured³

00 Missing⁴

00 Evacuated⁵

**64 Health
facilities with
roof damage⁶**

1: Statistical Institute of
Jamaica data

2,3,4,5: Assessments are still
ongoing and what is reported is
based on preliminary information.

6: Ministry of Health and Wellness
report (11 July 2024)

SERVICE DELIVERY – 10 July 2024

- In-patient bed occupancy increased from an average of 71% to 81%, with 3,795 in-patients; 3 of 24 hospitals have an occupancy of over 100%.
- Out-Patient Departments have re-opened and elective surgery has resumed in the majority of hospitals.

Mental Health and Psychosocial Support

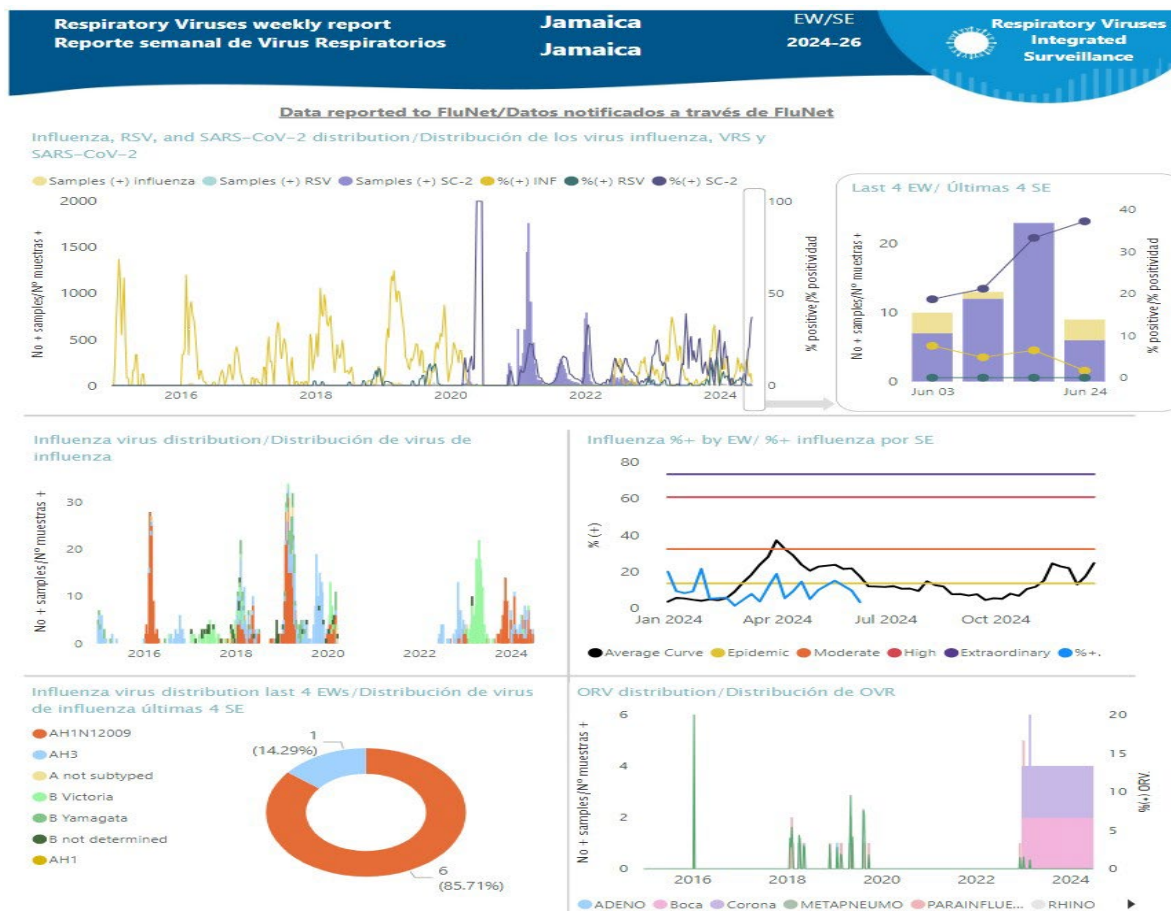
- Plans were finalized by PAHO for a meeting of the UN Mental Health and Psychosocial Support (MHPSS) Group and the MHPSS Technical Working Group; both will be held on 11 July 2024.

Laboratory Services

- All public laboratories have returned to normal pre-Hurricane Beryl services as at 10 July 2024.

SURVEILLANCE

- Surveillance data provided by the MOHW HEOC and other sources indicate recent increases in respiratory illnesses up to 08 July 2024, including a consistently high rate of SARS-CoV-2 positivity, which has increased in comparison to that seen in earlier months to levels indicating very high transmission and displacing Influenza A as the predominant circulating respiratory virus. SARI cases exceeded the epidemic threshold in the week ending 28 June 2024. Dengue cases, however, were noted to be declining. There were no outbreaks in shelters identified through shelter surveillance. No additional outbreaks or signals of concern were reported up to July 10, 2024. (See Appendix 1.)



Jamaica: Percentage of Hospital Admissions for Severe Acute Respiratory Illness (SARI 2024) (compared with 2011-2023)

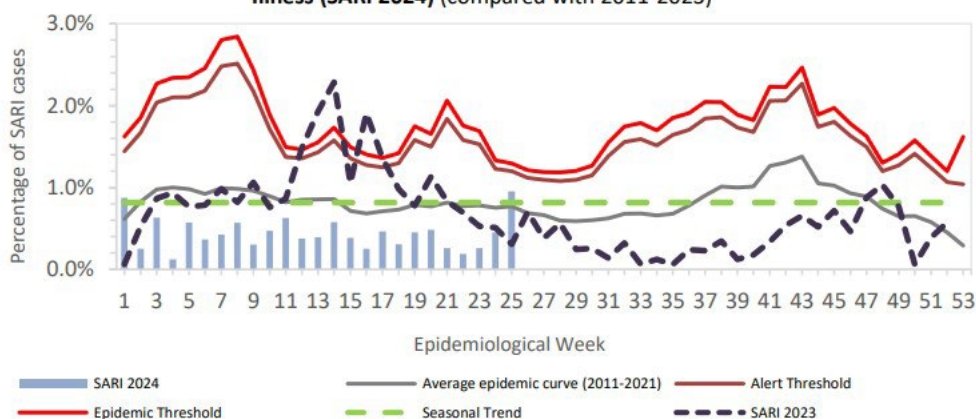


Figure 2: Percentage of hospital admissions for severe acute respiratory illness (SARI) up to 22 June 2024. Jamaica



HEALTH RISK ASSESSMENT

- Due to the on-going outbreak of dengue and 7-day positivity rate for COVID-19 at 8 July 2024 (22.5%), there is a very high risk of heightened transmission of these diseases and other respiratory and vector-borne diseases.
- The lack of running water and pooling of water will also increase the risk of water-borne outbreaks.
- The lack of electricity and running water also exacerbates the risk of food-borne outbreaks.
- Limited telephone services and internet connectivity continue to hinder the timeliness of alerts and reports.



INFRASTRUCTURE

- 64 health facilities have damage to roofs, 28 to windows, 17 to walls and 15 to gutters, as well as to storm drains.
- The MOHW continues assessments islandwide to determine the total number of health facilities with damage and the type.



ENVIRONMENTAL HEALTH

- The focus remains on water quality, food safety and vector control islandwide. Thousands of inspections have been undertaken and appropriate interventions taken, such as closure of food establishments where breaches were observed; destruction of breeding sites, with oiling of pools of water, larvicidal application and adulticidal activities continue for vector control.

RISK COMMUNICATION AND COMMUNITY ENGAGEMENT

- Public Service Announcements continue to be placed on the six main radio stations focusing on dengue, water safety, leptospirosis and injury prevention. Public Health Teams are re-inforcing these messages on their daily community visits.



SHELTERS

- As at 10 July 2024, there were 7 shelters open with a total of 53 occupants.



HEALTH NEEDS

Immediate needs

- Urgent repairs to damaged health facilities - mainly for roofing, windows and doors.
- Provision of generators for service delivery and maintaining the cold chain.
- Repairs and replacement of damaged equipment
- Items for improving operational capacity of sub-national HEOCs-20 laptops, printers, scanners, etc
- Emergency care equipment and other items for patient care and transportation – field hospital and equipment, jump kits for field response teams
- Enhancement of cold chain – vaccine refrigerators (66)
(See MOHW Needs List-8 July 2024)



RESPONSE

GOVERNMENT RESPONSE:

- The National Emergency Operations Center remains activated at Level 2 since 6 July 2024.
- The MOHW HEOC remains activated at national and sub-national levels to coordinate the health response and early recovery.
- Dialogue on humanitarian assistance is on-going with UN agencies and partners to determine areas of support and improve coordination.
- Needs lists are being finalized for all sectors.

PAHO RESPONSE:

- PAHO JAM EOC and Incident Management Team remain activated since 1 July 2024
- Provision of technical guidance to the MOHW Executive and HEOC on all matters for health.
- Implementation of activities within projects that will support the MOHW response.
- Co-lead the health aspect of UNETT to ensure priorities for health are identified and provision of humanitarian assistance is streamlined for the health sector.
- Membership in all UN sector Groups to guide health aspects, such as WASH, Food Security, Shelters and Protection.
- Re-assignment of one epidemiologist from IHM, PHE to support the PAHO JAM CO.
- Participation in the UN meeting with International Development Partners on areas of support on 9 July 2024.
- Engagement with partners for resource mobilization.
- Representation at the Caribbean Development Partners Group – Disaster Management meetings.

COORDINATION

- Support of MOHW with coordination of international partners offering humanitarian assistance and EMTs.





Health Facility, Jamaica – Post Hurricane Beryl