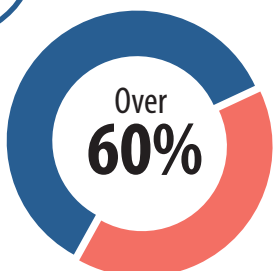


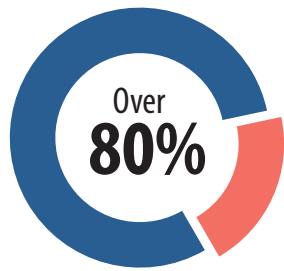


Nursing in the Americas

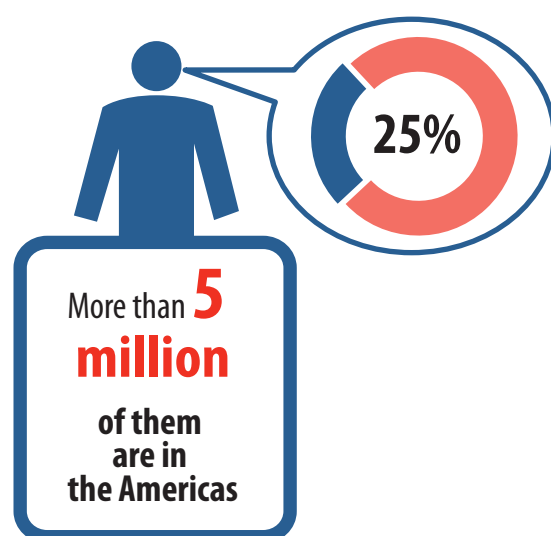
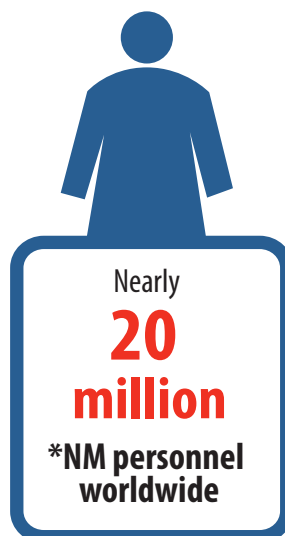
Quick facts



of the health workforce is composed of nursing personnel



of healthcare services are provided by *NM personnel



*NM- Nursing and Midwifery

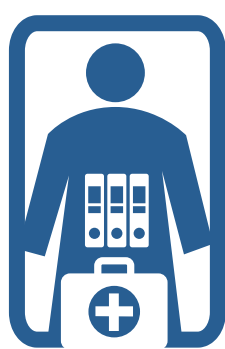
Why nurses are important



They are on the front line of health care



They promote health and disease prevention



They develop teaching activities in schools/universities and health services, train health personnel, and promote health education



They generate new scientific knowledge that influences clinical nursing practice

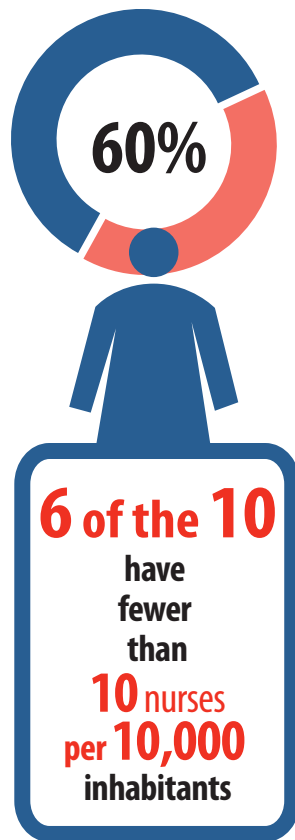
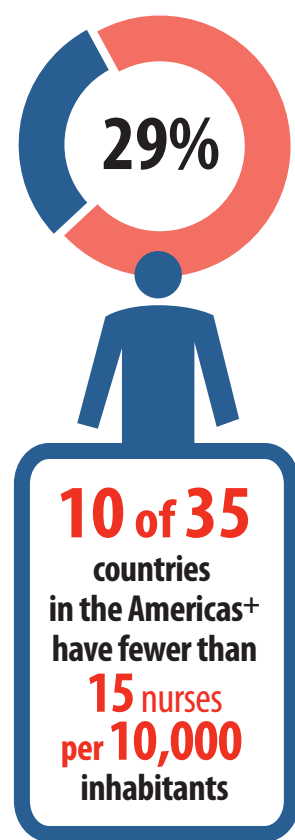


They manage health services and programs, and provide care to individuals, families and communities

Shortage

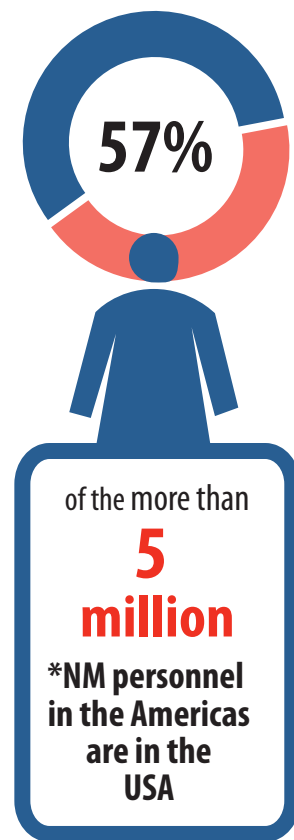
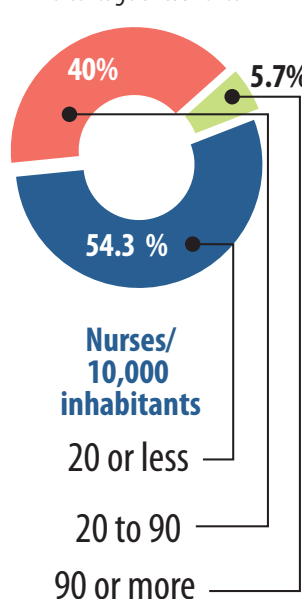
Uneven distribution

**An estimated 23 health workers per 10,000 inhabitants are needed to provide essential health services



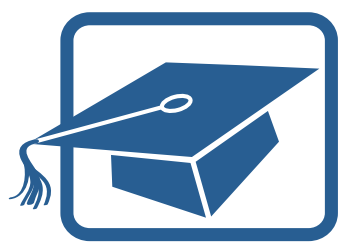
Regional distribution of nurses

Percentage of countries



* NM- Nursing and Midwifery ** Source: WHO (2010) + Countries that provided data

PAHO/WHO's nursing priority areas



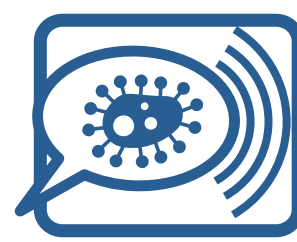
Education



Research



Policies and strategies



Communication



Interprofessional collaboration

Nursing and midwifery personnel have a significant impact on public health. To ensure universal access to health and universal health coverage, countries need to train more nurses and midwives.

www.facebook.com/EnfAmericas www.twitter.com/EnfAmericas www.observatoriorh.org/enfermeria



www.paho.org/nursing
Pan American Health Organization



World Health Organization
REGIONAL OFFICE FOR THE Americas