

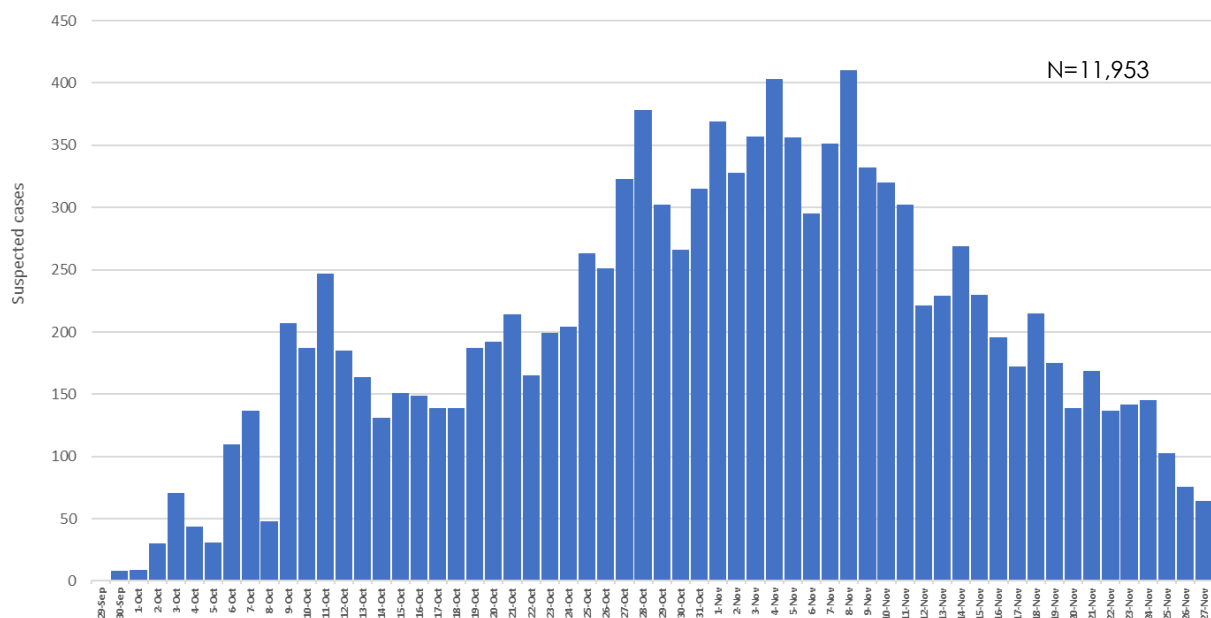
## Summary of the current situation<sup>1</sup>

### Haiti

Since the notification of the first two confirmed cases of *Vibrio cholerae* O1 in the greater Port-au-Prince area on 2 October 2022, to 27 November 2022, the Haitian Ministry of Health (Ministère de la Santé Publique et de la Population, MSPP per its French acronym)<sup>2</sup>, reported a total of 12,321 suspected cases in 10 departments of the country, including 1,045 confirmed cases, 10,247 hospitalized suspected cases, and 241 registered deaths. This represents an increase of 12% in suspected cases (N=1,282), 11% in confirmed cases (N=107) and 19% in deaths (N=39) compared to the Update of November 22, 2022. To date, 8 departments have confirmed cases (Artibonite, Centre, Grand-Anse Nord, Nord-Ouest, Ouest, Sud and Sud-Est). As of November 27th, the case fatality rate among suspected cases is 2%.

Of a total of 2,698 samples analyzed by the National Public Health Laboratory (LNSP for its acronym in French), 1,031 were confirmed (38 % positivity rate).

**Figure 1.** Daily distribution of suspected cases of cholera in Haiti in 2022, as of 27 November 2022<sup>3</sup>



Source: Ministère de la Santé Publique et de la Population

<sup>1</sup> Update produced using available provisional data as of 27 November 2022, which will be adjusted as new information becomes available.

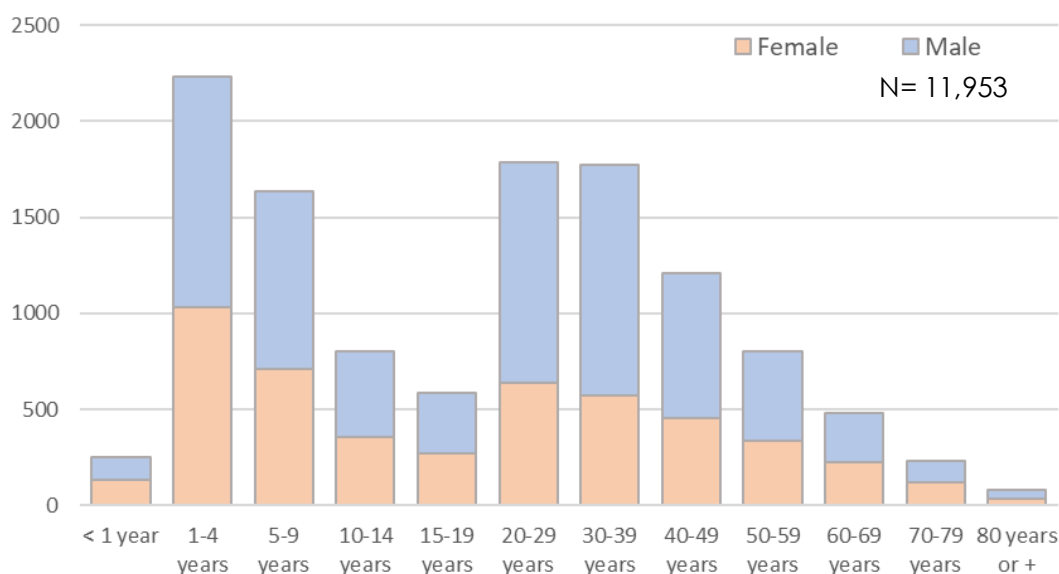
<sup>2</sup> Epidemiological situation of cholera, Haiti, available at: <https://bit.ly/3Vrdyp6> and <https://bit.ly/3Sq2ZQw>

<sup>3</sup> The figures and map produced in this update exclusively represent the cases related to the community outbreak registered in Haiti. They do not include the cases registered in the Port-au-Prince prison.

**Suggested citation:** Pan American Health Organization / World Health Organization. Epidemiological Update: Cholera. 29 November 2022, Washington, D.C.: PAHO/WHO; 2022

Of the total reported suspected cases with available information, 59% are male and 46% are aged 19 years or younger. The most affected age group is 1 to 4-year-olds, followed by 20 to 29-year-olds and 30 to 39-year-olds (Figure 2).

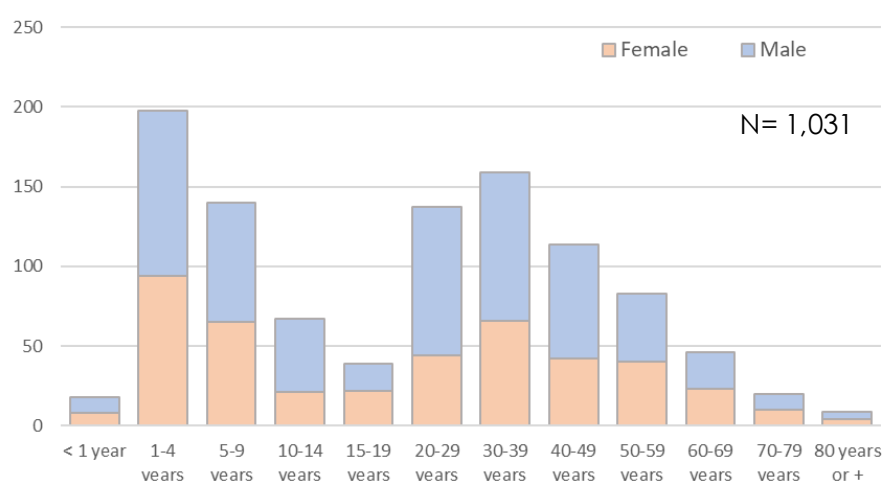
**Figure 2.** Distribution of suspected cases of cholera by age group in Haiti in 2022, as of 27 November<sup>3</sup>



Source: Ministère de la Santé Publique et de la Population

Among confirmed cases with available age and sex information, 45% are aged 19 years or younger. The most affected age group is 1 to 4-year-olds, followed by 30 to 39-year-olds (Figure 3).

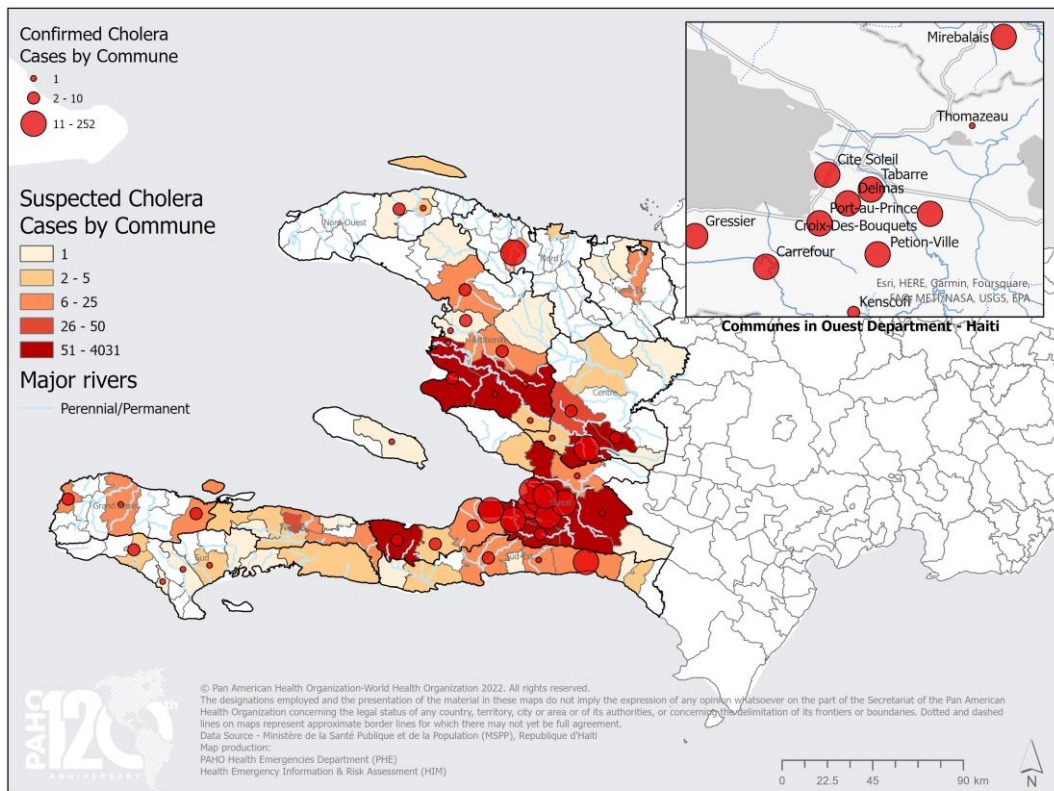
**Figure 3.** Distribution of confirmed cases by age group and sex in Haiti in 2022, as of 27 November<sup>3</sup>



Source: Ministère de la Santé Publique et de la Population

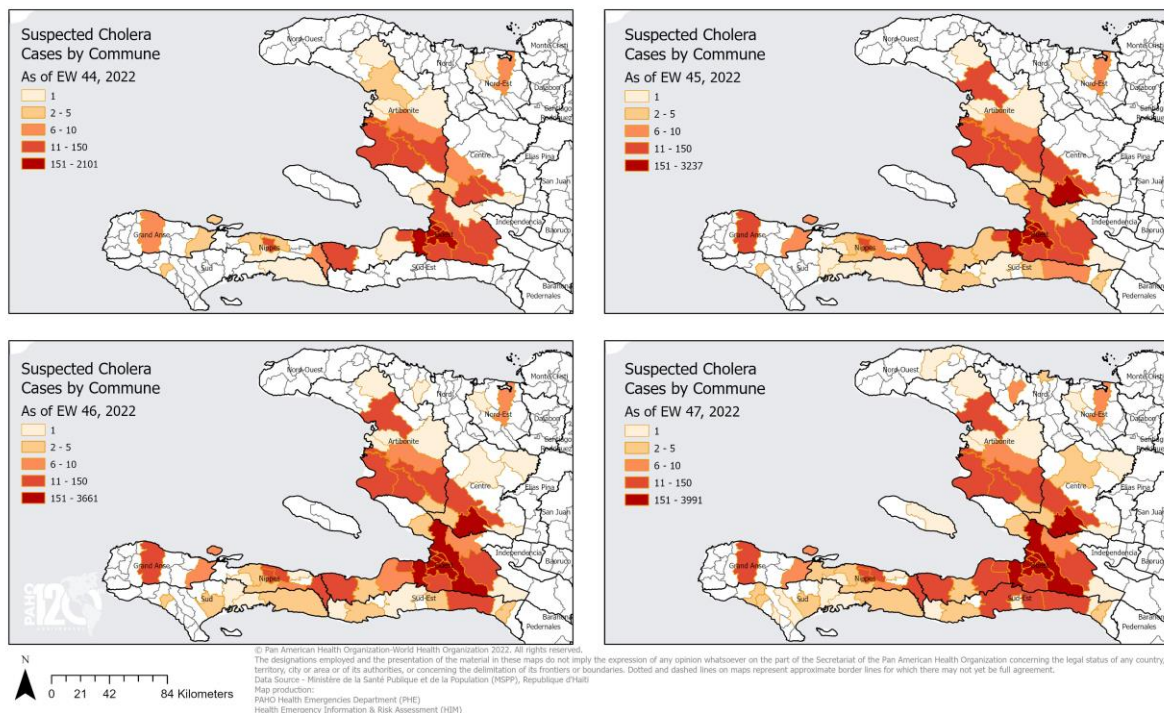
The Ouest Department continues to report the highest number of cases, with 92% of all suspected cases recorded (excluding the 368 suspected cases from the Port-au-Prince prison). The communes of Cité-Soleil and Port-au-Prince account for 56% of all suspected cases reported in the Ouest Department (Figure 4).

**Figure 4.** Map of cumulative cases of cholera in Haiti in 2022, as of 27 November 2022<sup>3</sup>

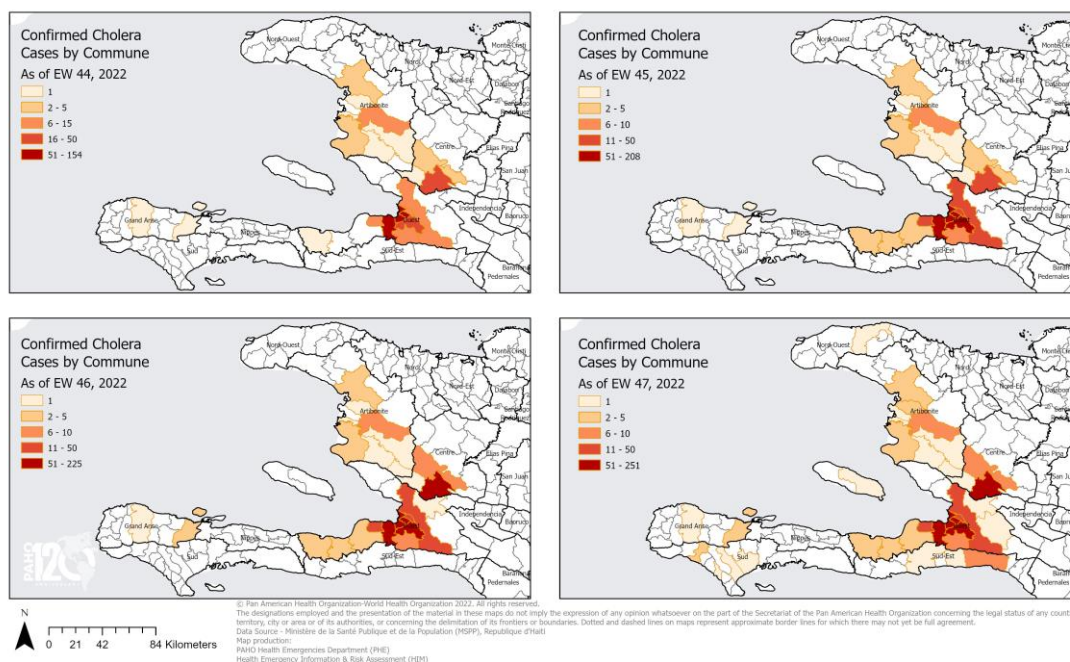


In the series of maps below you can observe how the geographical dispersion of the accumulated suspected (Figure 5) and confirmed (Figure 6) cases, according to each epidemiological week.

**Figure 5.** Suspected cholera cases in Haiti in 2022, by epidemiological week<sup>3</sup>



**Figure 6.** Confirmed cholera cases in Haiti in 2022, by epidemiological week<sup>3</sup>



In the Port-au-Prince prison, an outbreak of cholera has been registered which has identified 368 suspected cases to date, including 14 confirmed cases and 14 deaths.

The complex humanitarian and security crisis, added to the limited access to fuel throughout the country continues, so access to health services and laboratories is limited and, therefore, epidemiological surveillance is affected.

The Pan American Health Organization / World Health Organization (PAHO / WHO) is working in coordination with the Haitian public health authorities to characterize this event and support the response.

### Dominican Republic

On the 21<sup>st</sup> of November 2022, the Dominican Republic Ministry of Public Health confirmed the second imported case of cholera in the country. This is a 4-year-old child of Haitian nationality, who entered the Dominican Republic on November 18 from Port-au-Prince and is being treated at the Providence Hospital in Monte Cristi. For now, none of the contacts have presented symptoms and no additional confirmed cases related to this case have been reported. To date, a total of 2 confirmed imported cases have been reported in the Dominican Republic. The Ministry's press releases are available at: <https://bit.ly/3DhfERG>. <https://bit.ly/3XsM7fB>

## Guidance for national authorities

The Pan American Health Organization / World Health Organization (PAHO/WHO) recommends that Member States continue their efforts to strengthen and maintain cholera surveillance in order to detect suspected cases early, provide adequate treatment and prevent its spread. Early and adequate treatment maintains the case-fatality rate (CFR) of hospitalized patients at less than 1%.

PAHO/WHO encourages Member States to simultaneously continue their efforts to guarantee adequate basic sanitation conditions and access to drinking water, in addition to hygiene promotion and social mobilization, in order to reduce the impact of cholera and other waterborne diseases.

PAHO/WHO reiterates that Member States continue implementing the recommendations formulated in the Epidemiological Update of November 1, 2022, available at <https://bit.ly/3WFqdpf>, which remain valid.



## References

- Haiti Ministère de la Santé Publique et de la Population: Report of cholera cases in Port-au-Prince, Haiti: 1 October 2022. Available at: <https://bit.ly/3UWGkkm>
- Haiti Ministère de la Santé Publique et de la Population: Report of cholera cases in Haiti. Available at: <https://www.mspp.gouv.ht/> and <https://bit.ly/3Vrdyp6>
- Haiti Cholera Outbreak 2022 Dashboard, Washington, DC; PAHO/WHO. Available at: <https://shiny.pahobra.org/cholera/>
- Epidemiological Updates - Cholera Resurgence in Haiti, Washington, DC; PAHO/WHO. Available at: <https://bit.ly/3EFdex9>
- Weekly Epidemiological Bulletin. Cholera Annual Report 2021. WHO. Available at: <https://apps.who.int/iris/handle/10665/362858>
- Weekly Epidemiological Bulletin. Cholera Annual Report 2019. WHO. Available at: <https://apps.who.int/iris/handle/10665/334242>
- Epidemiological Alert: Cholera Resurgence in Haiti – 2 October 2022, Washington, DC; PAHO/WHO. Available at: <https://bit.ly/3Eq6zqt>
- Epidemiological Update: Cholera – 11 October 2018, Washington, DC; PAHO/WHO. Available at: <https://bit.ly/3RwfJVo>
- WHO cholera information. Available at: <https://www.who.int/news-room/fact-sheets/detail/cholera>
- PAHO Health Topics: Cholera. Available at: <https://www.paho.org/en/topics/cholera>
- PAHO/WHO. Cholera cases in the Americas since 1987. Available at: [https://ais.paho.org/hip/viz/ed\\_colera\\_casesamericas.asp](https://ais.paho.org/hip/viz/ed_colera_casesamericas.asp)
- PAHO/WHO. Recommendations for the clinical management of cholera. 2010. Available at: <https://bit.ly/3RthjXZ>