

COVID-19

PAHO JAMAICA CO EOC – COVID-19 SITUATION REPORT #496
7 APRIL 2022 (as at 6:00 p.m.)
JAMAICA, BERMUDA AND THE CAYMAN ISLANDS

EPIDEMIOLOGICAL SUMMARY

Country	Confirmed Cases (New within 24hrs)	Active Cases (% of Total Cases)	Hospitalized (% Active Cases)	Deaths (New within 24hrs)	Case Fatality Rate (%)	Total Tests (Cum. Positivity Rate)	Transmission
Jamaica ⁱ	128,972 (22)	304 (0.2%)	16 (5.3%)	2,902 (1)	2.3%	945,271 (13.6%)	Community Transmission
Bermuda ⁱⁱ	12,711 (32)	220 (1.7%)	4 (1.8%)	129 (1)	1.0%	848,492 (1.5%)	Community Transmission
Cayman Islands ⁱⁱⁱ	21,121 ^{iv} (40)	621 (2.9%)	2 (0.3%)	27 (1)	0.1%	Pending	Community Transmission

JAMAICA:

Table 1. Summary as at end of Epidemiological Week 13 (27 Mar – 2 Apr 2022)

Confirmed Cases	New Cases	% Change in New Cases in last 7 days	Deaths	New Deaths	% Change in New Deaths in last 7 days	Weekly Positivity Rate	% Change in Weekly Positivity Rate
128,843	164	+17.1%	2,896	17	+41.7%	3.5%	+6.1%

TRENDS IN CASES & DEATHS: As of 7 April 2022, Jamaica had **128,972 confirmed cases** of Coronavirus Disease 2019 (COVID-19) with **22 new cases** confirmed in the past 24 hours. Active cases now account for 0.2% of confirmed cases, and approximately 0.01% of the population in isolation across the island.^v New cases and deaths have increased by 17.1% and 41.7%, respectively during EW 13. There are currently **2,902 COVID-19 related deaths**, with 1 death occurring within the last 24 hours. Since 1 March 2021, unvaccinated cases accounted for 97.9% of deaths (n=2,304). A total of 945,271 samples were tested at the laboratory with a **daily positivity rate of 4.1%** and a cumulative positivity rate of 13.6%.

SEX & AGE DISTRIBUTION OF CASES & DEATHS: As of 4 April 2022, the highest burden of total confirmed cases remained within the 20-29 years and 30-39 years age groups. These groups accounted for 19.5% and 18.5% of total cases respectively, with a mean age of 40.7±20.6yrs. Females were primarily affected compared to males, with a male to female ratio (M:F) of 1:1.3; while the males accounted for more deaths, with a M:F ratio of 1:0.9.

ⁱ Cases and deaths as at 7 Apr 2022, reported 8 Apr 2022.

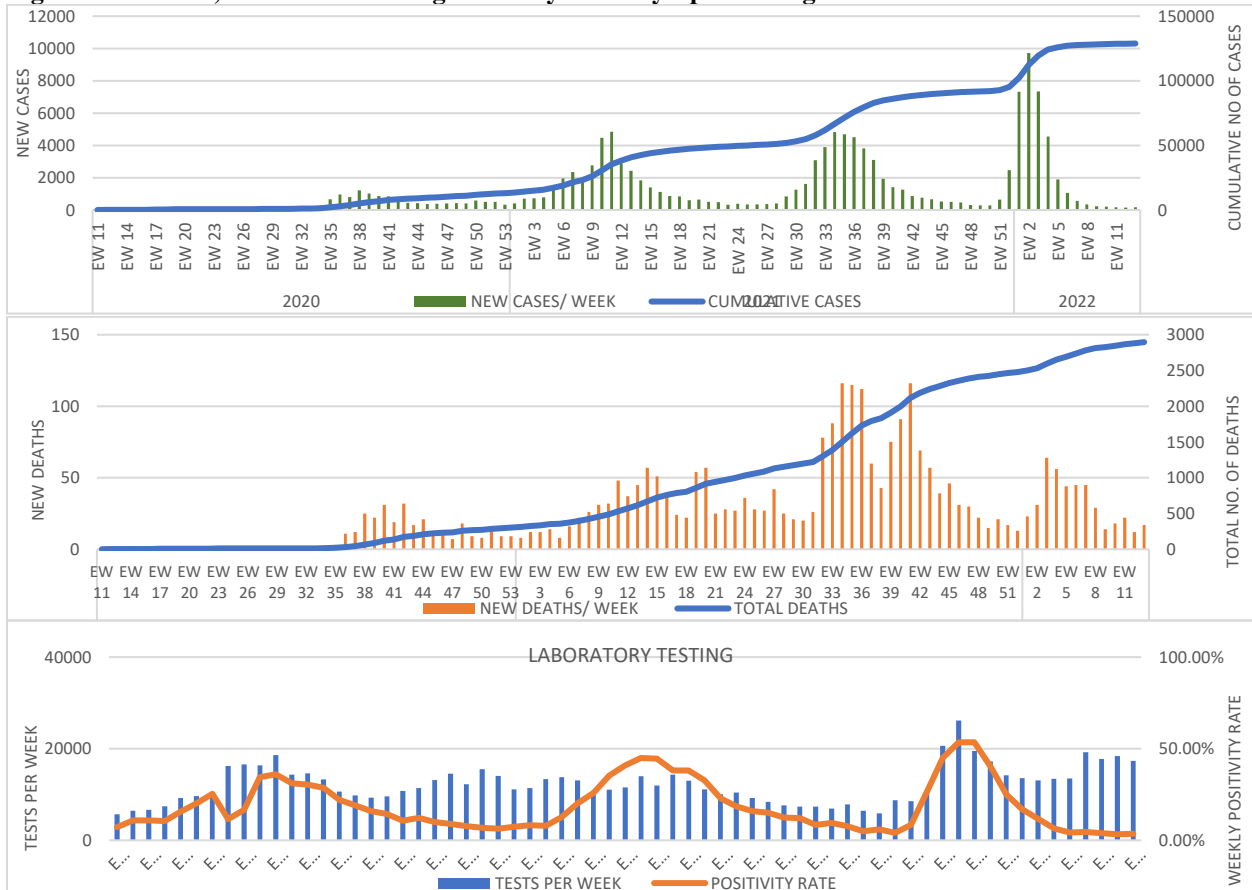
ⁱⁱ Cases and deaths as at 4 Apr 2022, reported 6 Apr 2022.

ⁱⁱⁱ Cases and deaths as at 2 Apr 2022, reported 6 Apr 2022.

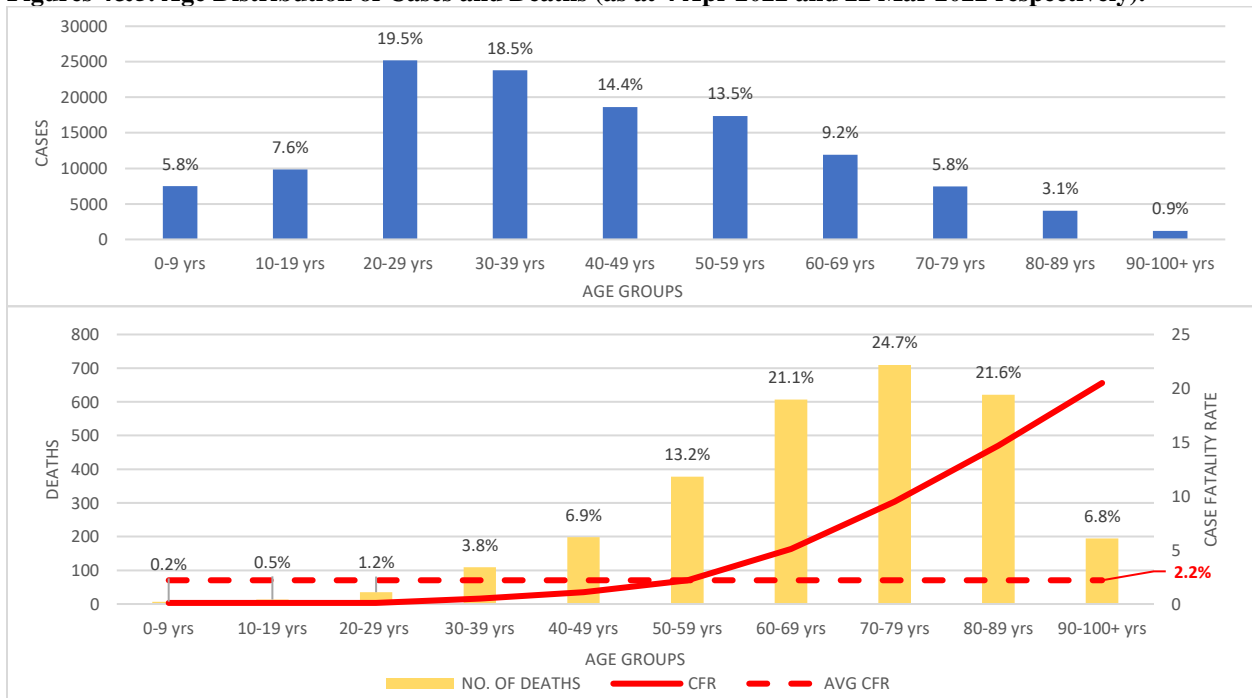
^{iv} Represents a total of cumulative cases as at end of EW13 (2 Apr 2022) and new cases as at 6 Apr 2022.

^v Based on total population estimate of 2.9 million for Jamaica.

Figures 1-3. Cases, Deaths and Testing/Positivity Rates by Epidemiological Week.

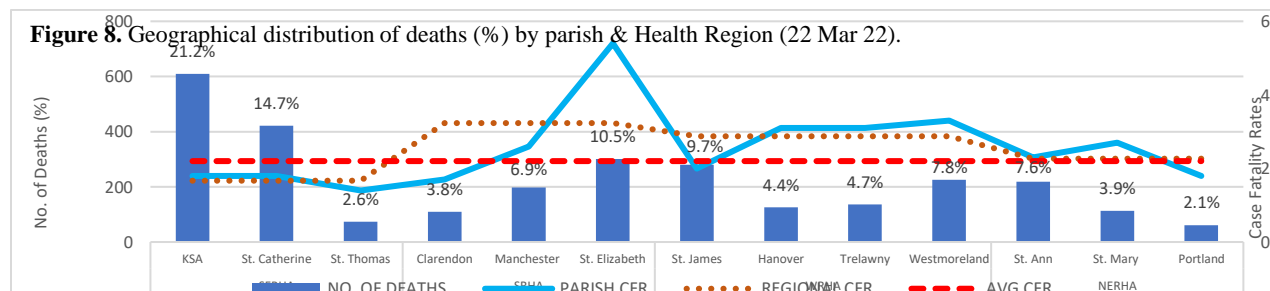
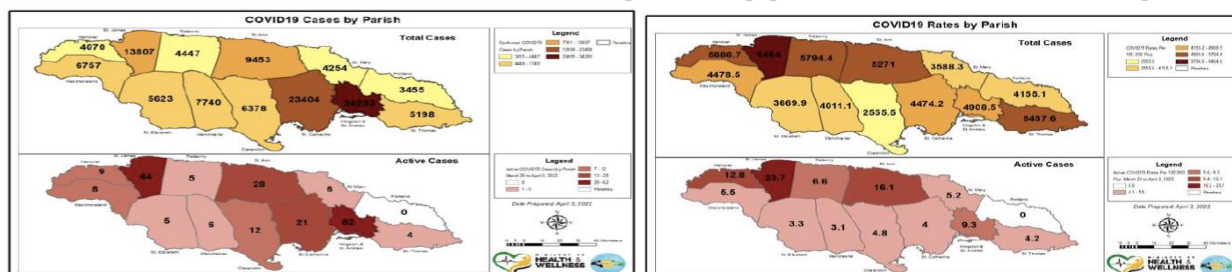


Figures 4&5. Age Distribution of Cases and Deaths (as at 4 Apr 2022 and 22 Mar 2022 respectively).



GEOGRAPHICAL DISTRIBUTION: Data from 4 April 2022 highlighted that Kingston & St. Andrew (26.7%, n=34,283) and St. Catherine (18.2%, n=23,406) had the highest cumulative number of cases, while the greater proportion of new cases within 24 hours of 7 April 2022 were detected in Kingston & St. Andrew (31.8%) and St. Catherine (22.7%). The highest proportions of active cases were found in the parishes of St. Catherine and St. James, accounting for 18.6% and 16.0% of cases respectively. The total rate of active infections was the highest in St. James (23.7 per 100,000 population) and St. Ann (16.1 per 100,000 population), with its rate being 2-3 times higher than other parishes in the region. Fatality data for 22 Mar 2022 indicated that higher than average case fatality rates were observed in the Southern and Western Regional Health Authorities, most notably in the parish of St. Elizabeth.

Figures 6 & 7. COVID-19 Parish Distribution and Rates (cases per 100,000 population) of total and active cases (3 April 2022).



HOSPITALIZATIONS: As of 7 April 2022, there was a total of 16 hospitalizations (5.3% of active cases), with average figures decreasing by 33.3% between EW 12 (n=36) and EW 13 (n=24). Of the hospitalized cases, 46.6% (n=7) were moderately ill, 6.6% (n=1) severely ill, and there were no critically ill cases. Unvaccinated cases accounted for 0% of severely and 57.1% of moderately ill admissions. The average hospital occupancy rate during that period was 13.3%, with 100% availability of COVID-19 designated ICU beds and HDU beds.

GOVERNMENT RESPONSE

New COVID-19 measures are to be announced on 15 April 2022 to replace the current legislation that governs measures for the containment of COVID-19 in the Public Health Act, specifically the Public Health (Enforcement Measures) (Coronavirus COVID-19) Order, 2022, 18 March 2022, at: <https://opm.gov.jm/news/public-health-enforcement-measures-covid19-order-2022/>

BERMUDA:

TRENDS IN CASES & DEATHS: As of 4 April 2022 (reported 6 Apr 2022), Bermuda confirmed 12,711 cases of Coronavirus Disease 2019 (COVID-19) with 32 new cases within the last 24-72hr

period. There were 220 active cases (1.7% of total cases and approximately 0.3% of the population)^{vi}, 4 hospitalized cases (1.8% of active cases), and no cases admitted to ICU. New cases have decreased by **7.0%** during EW 13.

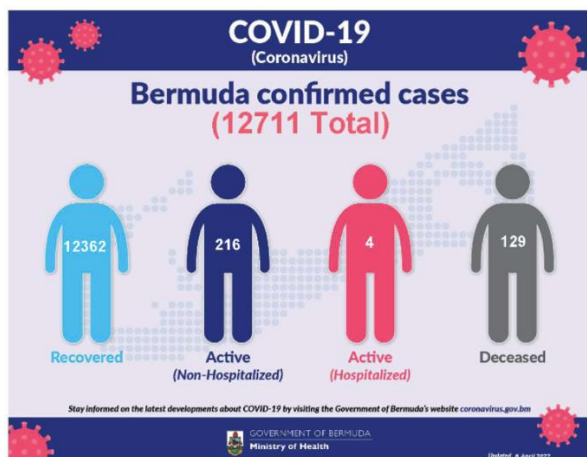


Table 2. Summary as at end of Epidemiological Week 13.

Confirmed Cases	New Cases in last 7 days	% Change in New Cases in last 7 days	Deaths	New Deaths in last 7 days	% Change in Deaths in last 7 days	Positivity Rate	% Change in Positivity Rate in last 7 days
12,658	202	-10.2%	129	2	+100%	2.2%	-15.4%

GOVERNMENT RESPONSE:

Effective 1 April 2022, mask requirements in Bermuda will change and will only need to be worn in specific settings, with businesses having the discretion to set mask requirements for entry to their premises and for access to services that are appropriate for their respective establishments. All persons entering Government buildings, however, will be required to wear a mask covering the nose and mouth. This policy will be reviewed on 18 April 2022.

CAYMAN ISLANDS:

TRENDS IN CASES & DEATHS: As of 2 April 2022, Cayman had **21,121 confirmed cases** of Coronavirus Disease 2019 (COVID-19) with **40 new cases reported on 6 April 2022**. A total of **27 COVID-19 related deaths were recorded since March 2020, with one (1) death occurring within the last 24-48hrs**. There are currently 2 hospitalized cases, with one case receiving treatment in the Intensive Care Unit (ICU).

^{vi} Based on an estimated population for Bermuda of 63,000 people.



Table 3. Summary as at end of Epidemiological Week 13.

Confirmed Cases	New Cases in last 7 days	% Change in New Cases in last 7 days	Deaths	New Deaths in last 7 days	% Change in Deaths in last 7 days	Positivity Rate of PCR tests	% Change in Positivity Rate in PCR tests in the last 7 days
21,121	288	+8.3%	25	0	0%	20.1%	-11.1%

Figures 9 & 10. Trend in daily cases Mar 2020 – Apr 2022.

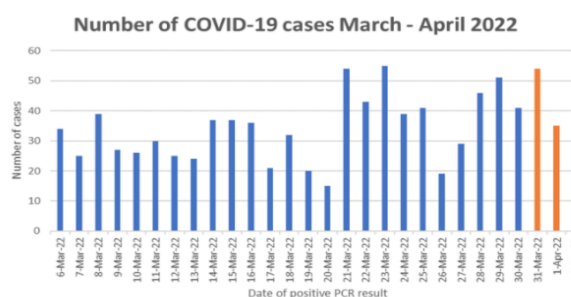
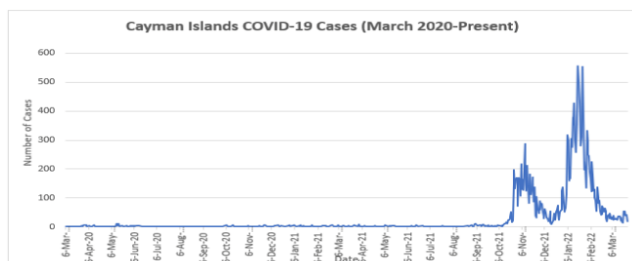
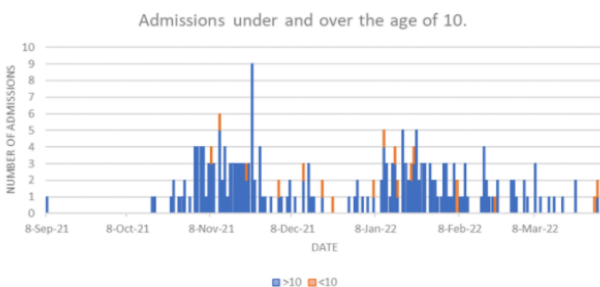


Figure 11. Trend in hospitalizations 8 Sep 2021 – 8 Mar 2022.



GOVERNMENT RESPONSE

Phase 5 of Border Re-opening remains in effect, with Pre-Arrival testing as below:

All incoming travellers aged 5 years and over must provide a negative result from a PCR or certified antigen-detecting rapid diagnostic test (LFT) taken no earlier than the day before departure.

Control and Management of COVID-19 (No.2) Regulations, 2022 and Control of COVID-19 (Travel) (No. 3) Regulations, 2022 are in effect as of 21 March 2022.

<http://gazettes.gov.ky/portal/pls/portal/docs/1/13150577.PDF>

<http://gazettes.gov.ky/portal/pls/portal/docs/1/13150578.PDF>

PAHO CO UPDATE:

PILLAR 1 – COORDINATION, PLANNING, FINANCING, AND MONITORING

- a. PAHO CO continued the implementation of COVID-19 response activities within 8 COVID-19 Awards / Grants and Contributions.
 - i. USG Contributions: Planning was furthered for support to COVID-19 vaccination programme, and procurement of equipment for establishing a Type 1 Emergency Medical Team initiated with MOHW counterparts and PAHO HQ team. Funds expire in December 2022.
 - ii. USAID GH-ARP: Procurement of key equipment for vaccination and case management continues and Terms of References finalized for consultants for enhancement of oxygen supply. Pharmacovigilance officers started work based on their contracts on 28 March 2022.
 - iii. US CDC COAG: PAHO CO advised MOHW and CDC counterparts in Jamaica that the supplier selected to provide 2 ambulances is unable to do so by the end of September 2022 due to chip shortages and other supply chain limitations. Information is awaited from CDC team if a 12 – 14 month delivery lead time is possible for another model of vehicle – 31 March 2022.
 - iv. Canada Caribbean project: All project activities were completed, prior to expiry of funds on 31 March 2022.
 - v. CYM - EU RESEMBID / Expertise France project – The project is awaiting approval from the donors and PAHO Legal Team.
- b. PAHO CO remains embedded in the MOHW, JAM EOC and provides 24-hr technical support and guidance, including at the weekly EOC briefing meeting.
- c. PAHO CO maintained the technical lead for Health for the COVID-19 response within the UNCT and the Government of Jamaica (GOJ) system.

PILLAR 4 – POINTS OF ENTRY, INTERNATIONAL TRAVEL AND TRANSPORT, AND MASS GATHERINGS

- a. PAHO CO in collaboration with JAM IHR NFP finalized plans for 2022 for strengthening IHR core capacities, including two training sessions for Port Health staff from 18 – 20 May 2022.
- b. PAHO CO continued to provide reminders to the IHR NFP, JAM on follow-up of information received from PAHO IHR on travellers after departure from Jamaica and the provision of reports – 31 March 2022.

PILLAR 7 – CASE MANAGEMENT, CLINICAL OPERATIONS AND THERAPEUTICS

- a. PAHO CO advised MOHW counterparts to provide their expression of interest to receive supplies of Molnupiravir with a due date of 5 April 2022. – 17 March 2022.

PILLAR 9: MAINTAINING ESSENTIAL HEALTH SERVICES AND SYSTEMS

- a. PAHO CO continued to work on strategic areas for strengthening resilient health systems, including:
 - a. Health Financing: MOHW Budget Analysis, Capacity Building on Budget Analysis Techniques, National Health Accounts and Fiscal Space Study.
 - b. Human Resources: Development of Strategic Directions for Nursing and Midwifery in Jamaica
 - c. Information Systems for Health: Development of IS4H Programme Structure in the MOHW
 - d. Health Technology Assessment and Management: List of Priority Health Technologies and Capacity Building on Technology Management
- b. Smart Health Care Facilities Project.
 - a. Monitoring of the progress of retrofitting at the Santa Cruz continued with one meeting with the Inspection Firm to ensure on-time implementation.

- c. Re-scheduling continues for the technical cooperation activities requested for core health emergency preparedness and response programmes, including for the COVID-19 IHR Intra-Action Review in May – June 2022.– 7 April 2022.

PILLAR 10 - VACCINATION

- a. PAHO CO collaborated with MOHW, JAM to plan for support of the Cold Chain and other activities related to COVID-19 vaccines. – 5 April 2022.
- b. On-going technical guidance was provided for the MOHW, Jamaica on vaccine supply, storage and delivery.

GAPS / CHALLENGES

1. Vaccine coverage remains low in Jamaica with a lack of evidence of the causation for various population groups, whether vaccine hesitancy, access and/or other reasons.
2. The COVID-19 pandemic has delayed review, strengthening and implementation of the health emergency / disaster risk management programmes, including plans for Health EOC capacity building to include the Medical Information and Coordination Cell (CICOM) for the Emergency Medical Team, for Jamaica, Bermuda and Cayman.
3. Intra Action Reviews have not been conducted in JAM, BMU and CYM and will be arranged for the first semester in 2022 to ensure that recommendation for strengthening pandemic preparedness and response can be provided based on lessons identified for the COVID-19 response.

NEEDS

1. JAMAICA

- a. Health EOC strengthening.
- b. Assessment of causation for low COVID-19 vaccination coverage to guide implementation of appropriate strategies
- c. Laboratory and medical equipment and supplies.
- d. Strengthening of pandemic preparedness planning.

2. BERMUDA

- a. Strengthening of the Health Disaster Management Programme and Health EOC establishment and management

3. CAYMAN ISLANDS

- a. Strengthening of the Health Disaster Management Programme and surveillance were noted as priorities to enhance the COVID-19 and any other responses for health emergencies.
- b. Strengthening of Health EOC establishment and management.

WORLD HEALTH DAY – 7 APRIL 2022

PAHO CO hosted a World Health Day Conversation on Climate Change, Pollution and Health which was aired on PAHO YouTube Channel and the Public Broadcasting Company of Jamaica and other platforms, featuring experts from PAHO, MOHW and the National Council on Drug Abuse, Jamaica. – 7 April 2022.

