

COVID-19

PAHO JAMAICA CO EOC – COVID-19 SITUATION REPORT #476
 19 NOVEMBER 2021 (as at 6:00 p.m.)
 JAMAICA, BERMUDA AND THE CAYMAN ISLANDS

EPIDEMIOLOGICAL SUMMARY

Country	Confirmed Cases (New within 24hrs)	Active Cases (% of Total Cases)	Hospitalized (% Active Cases)	Deaths (New within 24hrs)	Case Fatality Rate (%)	Total Tests (Cum. Positivity Rate)	Transmission
Jamaica ⁱ	90,558 (91)	25,996 (28.7%)	160 (0.6%)	2,354 (11)	2.6%	661,374 (13.7%)	Community Transmission
Bermuda ⁱⁱ	5,714 (0)	30 (0.5%)	2 (6.7%)	106 (0)	1.9%	626,566 (0.9%)	Community Transmission
Cayman ⁱⁱⁱ Islands	5,532 (170)	3,675 (66.4%)	21 (0.4%)	4 (0)	0.07%	190,411 (2.9%)	Community Transmission

JAMAICA:

Table 1. Summary as at end of Epidemiological Week 45

Confirmed Cases	New Cases	% Change in New Cases in last 7 days	Deaths	New Deaths	% Change in New Deaths in last 7 days	Weekly Positivity Rate	% Change in Weekly Positivity Rate
90,209	528	-20.8%	2,327	46	+17.9%	8.40%	-30.1%

TRENDS IN CASES & DEATHS: As of 18 November 2021, Jamaica had **90,558 confirmed cases** of Coronavirus Disease 2019 (COVID-19) with **91 new cases** confirmed in the past 24 hours. There are currently 35,996 cases (28.7% of confirmed cases) in isolation across the island. New cases have decreased by 20.8%, and the number of confirmed deaths increased by 17.9% during EW 45. There are **2,354 COVID-19 related deaths** as of 18 November 2021. A total of 661,374 samples were tested at the laboratory with a daily positivity rate of 12.4% and a cumulative positivity rate of 13.7%.

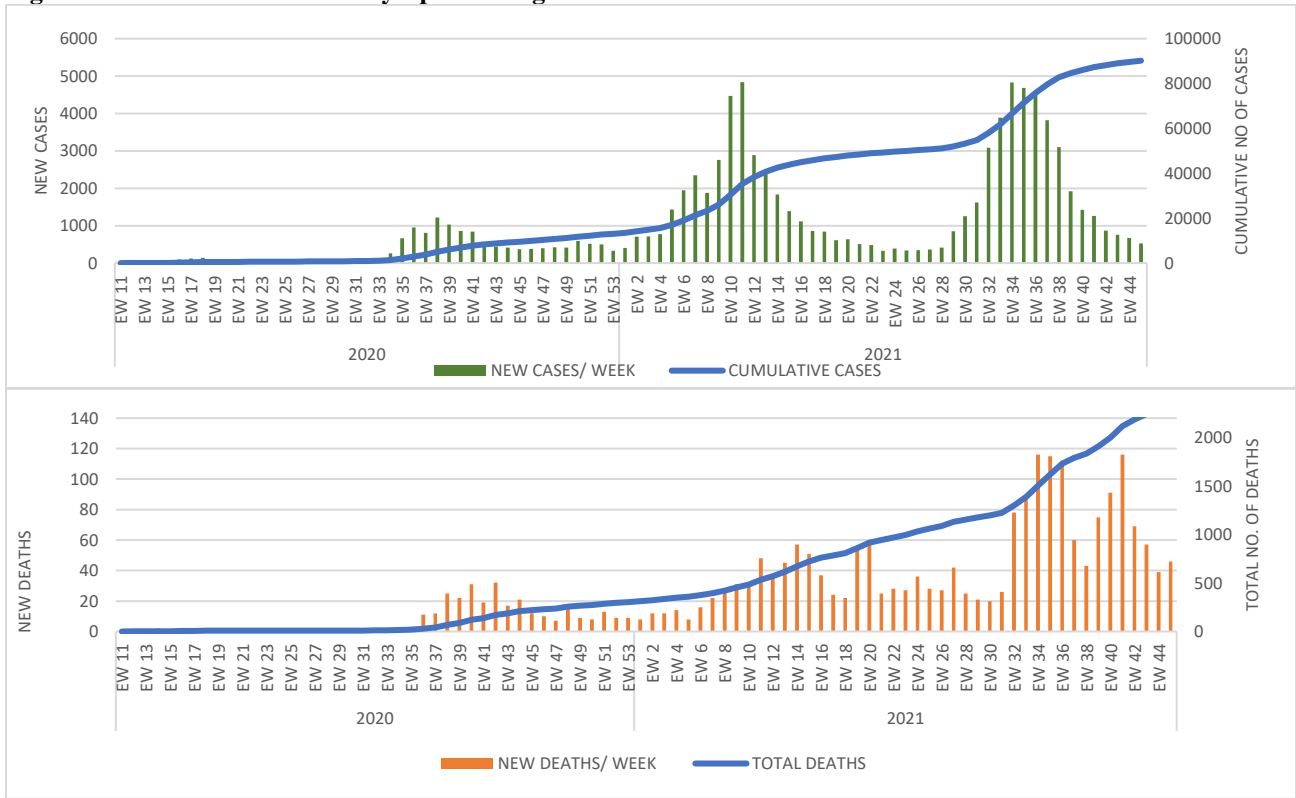
SEX & AGE DISTRIBUTION OF CASES & DEATHS: As of 17 November 2021, the highest burden of total confirmed cases remains within the 20-29 years and 30-39 years age groups, accounting for 18.7% and 17.9% of cases respectively, with the mean age at 41.3±20.7yrs. Females were primarily affected compared to males, with a male to female ratio (M:F) of 1:1.3; while the males accounted for more deaths, with a M:F ratio of 1:0.9.

ⁱ Cases and deaths as at 18 Nov 2021, reported 19 Nov 2021

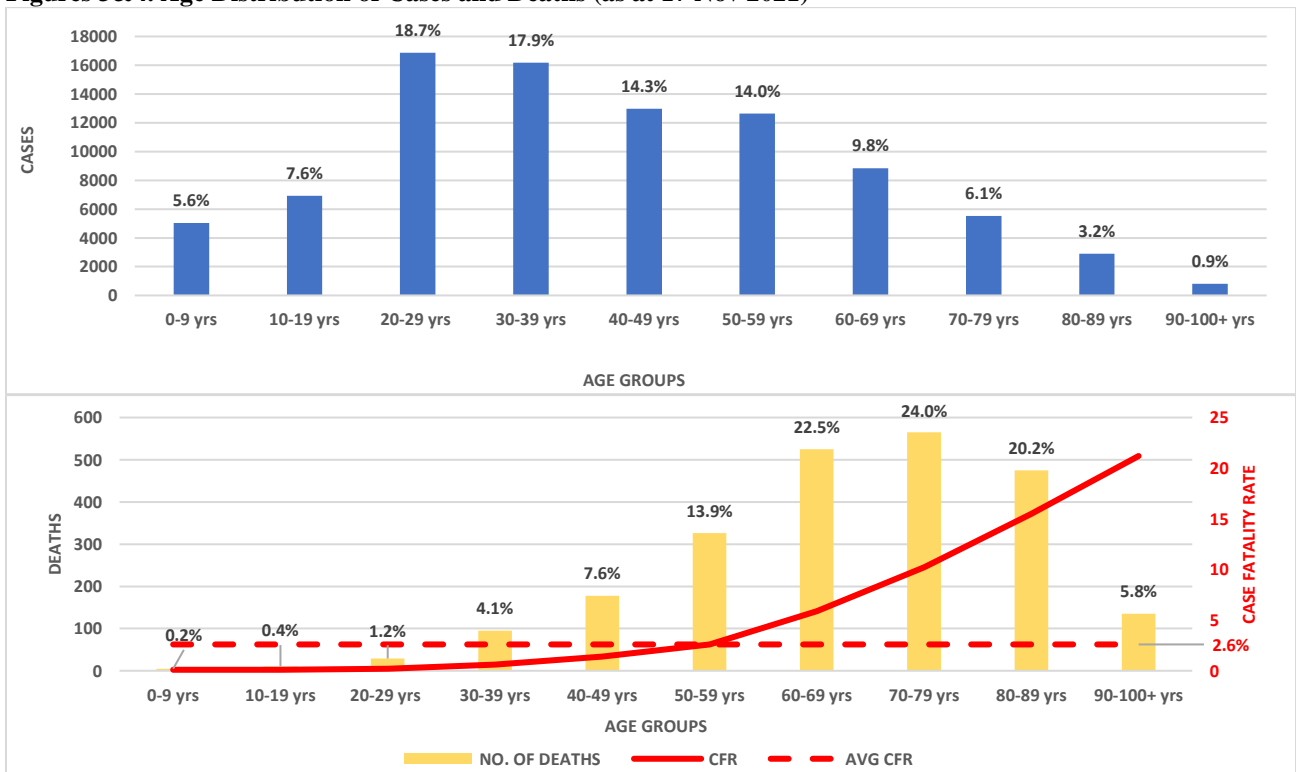
ⁱⁱ Cases and deaths as at 17 Nov 2021, reported 19 Nov 2021.

ⁱⁱⁱ Cases and deaths as at 18 Nov 2021, reported 19 Nov 2021.

Figures 1&2. Cases and Deaths by Epidemiological Week.

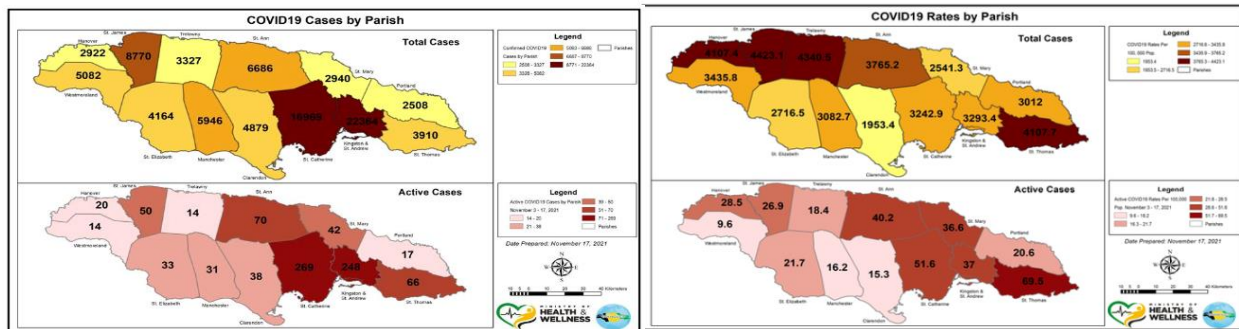


Figures 3&4. Age Distribution of Cases and Deaths (as at 17 Nov 2021)



GEOGRAPHICAL DISTRIBUTION: Data for 17 November 2021 highlighted that Kingston & St. Andrew (24.7%, n=22,364) and St. Catherine (18.8%, n=16,969) had the highest cumulative number of cases. The highest proportions of active cases for this week, however, were found in the parishes of St. James and St. Ann (15.6% and 13.3% respectively). The total rates of active infections for this reporting period were highest in the parishes of St. Thomas (69.5 cases per 100,000 population) and St. Catherine (51.6 cases per 100,000 population).

Figures 5 & 6. COVID-19 Parish Distribution and Rates (cases per 100,000 population) of total and active cases (17 Nov 2021)



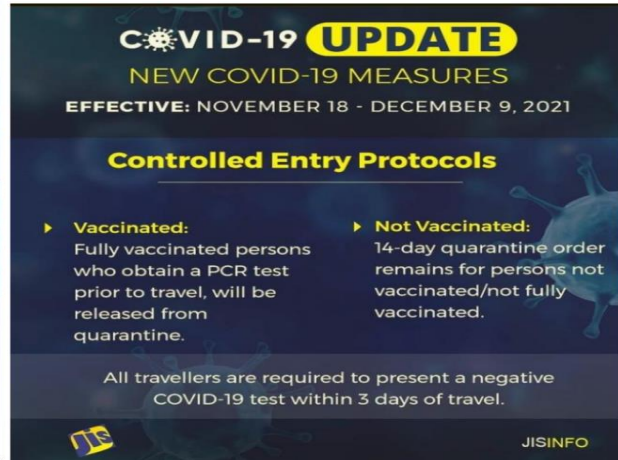
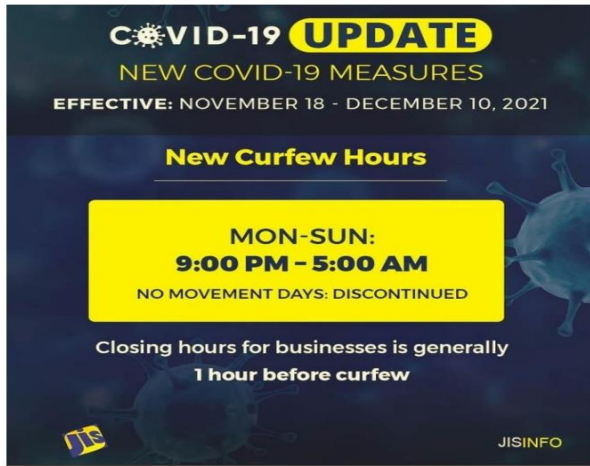
HOSPITALIZATIONS: As of 18 November 2021, hospitalizations decreased by approximately 26.3% since the last reporting period (11 Nov 2021). There was a total of 160 hospitalizations (0.6% of active cases). Of the hospitalized cases, 16.9% (n=27) were moderately ill, 17.5% (n=28) severely ill, and 4.4% (n=7) were critically ill. The average hospital occupancy rate as of 10 November has improved to 42.7%.

GOVERNMENT RESPONSE

The Disaster Risk Management (Enforcement Measures) (No. 11) (Amendment) Order, 2021 is in effect since 29 October 2021.

<https://moj.gov.jm/sites/default/files/DRM2021No11.pdf>

New measures introduced from 18 November – 9 December 2021 include:



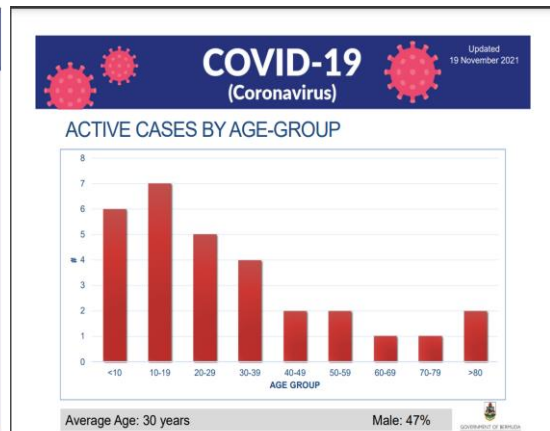
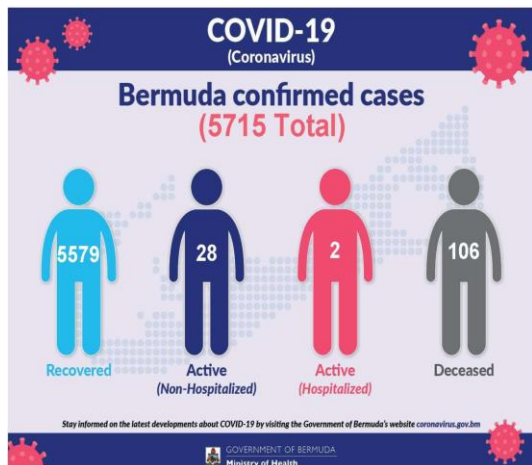
BERMUDA:

TRENDS IN CASES & DEATHS: As of 17 November 2021, Bermuda reported 5,714 confirmed cases of Coronavirus Disease 2019 (COVID-19) with no new cases within the last 24-48hr period. There were 30 active cases (0.5% of total cases), a decrease of 46.4% since the last report (11 Nov 2021). Of the active cases, 2 (6.7%) are hospitalized, with a significant reduction of this proportion (by 37.4%) since the last reporting period (11 Nov 2021). New cases and deaths have decreased by 3.1% and 33.3% respectively for EW 45.

Table 2. Summary as at end of Epidemiological Week 45.

Confirmed Cases	New Cases in last 7 days	% Change in New Cases in last 7 days	Deaths	New Deaths in last 7 days	% Change in Deaths in last 7 days	Positivity Rate	% Change in Positivity Rate in last 7 days
5,672	25	-19.4%	89	0	-100%	0.2%	-33.3%

Figures 7. Cases and deaths as of 17 Nov 2021 (reported 19 Nov 2021).



GOVERNMENT RESPONSE:

All travellers to Bermuda must follow the requirements set out in the Quarantine (COVID-19) (No.3) Order 2020.

[http://www.bermulaws.bm/laws/Consolidated%20Laws/Quarantine%20\(COVID-19\)%20\(No.%203\)%20Order%202020.pdf](http://www.bermulaws.bm/laws/Consolidated%20Laws/Quarantine%20(COVID-19)%20(No.%203)%20Order%202020.pdf)

As of 1 November 2021, gatherings are restricted to no more than 30 persons, while special permission may be granted from Government for larger gatherings.

As of 23 September 2021, the Minister of Health announced that unvaccinated travellers will quarantine for 14 days at home and will wear electronic and red wristbands.

CAYMAN ISLANDS:

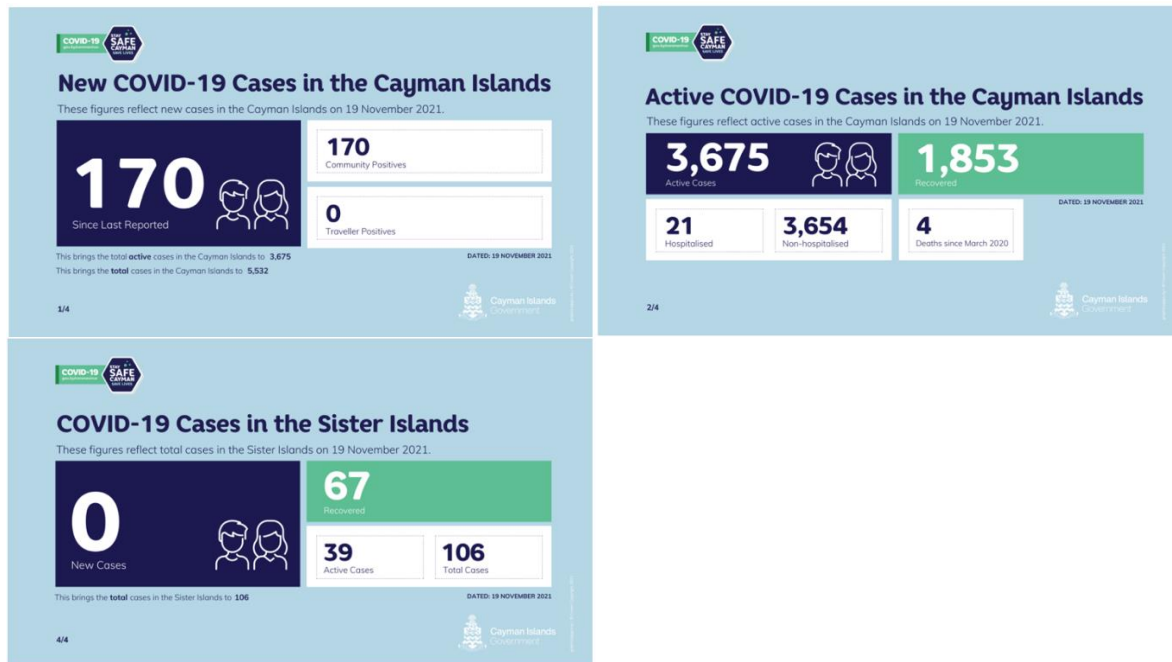
TRENDS IN CASES & DEATHS: As of 18 Nov 2021, Cayman had **5,532 confirmed cases** of Coronavirus Disease 2019 (COVID-19) with **170 new cases** reported in the last 24 hrs. Active cases have increased by 132.9% since the last reporting period (of 11 November 2021) and now comprise 66.4% of confirmed cases. A **total of 4 COVID-19 related deaths have been recorded since March 2020**, with no new deaths occurring within the last 24hrs. A total of **190,411** samples were tested for COVID-19, with a new **overall positivity rate of 2.9%**.

Table 3. Summary as at end of Epidemiological Week 45.

Confirmed Cases	New Cases in last 7 days	% Change in New Cases in last 7 days	Deaths	New Deaths in last 7 days	% Change in Deaths in last 7 days	Positivity Rate	% Change in Positivity Rate in last 7 days
3,761	662 ^{iv}	-33.7%	4	2	-	15.1%	+19.8%

Figure 8. Daily COVID-19 Summary.

^{iv} Some of the tests and corresponding data for cases for EW45 were reported in EW46, resulting in lower than normal figures for EW45.



GOVERNMENT RESPONSE

As of 20 November 2021, Cayman Islands moved to border re-opening Phase 4 criteria. This includes measures for pre-arrival PCR testing within 72 hours prior to travel date for all travellers age 5 years and older and quarantine exit PCR for all travellers and their quarantine companions aged 4 years and older.

Who can travel: Includes all vaccinated travellers (securely and non-securely verifiable)

Further information can be found at:

<https://www.explore.gov.ky/reopening-plan>

PAHO CO UPDATE:

PILLAR 1 – COORDINATION, PLANNING, FINANCING, AND MONITORING

- a. PAHO CO completed and re-submitted the proposal for Jamaica for the COVID-19 response funding through the USAID American Rescue Plan to PAHO HQ, based on feedback from the MOHW and the USAID Mission in Jamaica. – 18 November 2021
- b. PAHO CO prepared and submitted the detailed budget and justification to PAHO HQ for the EU RESEMBID/Expertise France project proposal for the Cayman Islands. The quality review was completed– 8 November 2021.
- c. PAHO CO reviewed the work plan and budget for Grant 452029 received for Jamaica – 18 November 2021
- d. PAHO CO continued the finalization of obligations of PAHO Assessed Contributions for COVID-19 response expiring in December 2021. Preparations for carry-over of funds to 2022 is on-going as determined by Grant agreements – 18 November 2021.

- e. PAHO CO remains embedded in the MOHW, JAM EOC and provides 24-hr technical support and guidance, including at the daily EOC briefing meeting.
- f. PAHO CO maintained the technical lead for Health for the COVID-19 response within the UNCT and the Government of Jamaica (GOJ) system.

PILLAR 3 – SURVEILLANCE, EPIDEMIOLOGICAL INVESTIGATION, CONTACT TRACING & ADJUSTMENT OF PUBLIC HEALTH AND SOCIAL MEASURES

- a. PAHO CO provided reminders to the IHR NFP, JAM on follow-up of information received from PAHO IHR on contacts of travellers after departure from Jamaica and the provision of reports – during the week.

PILLAR 4 – POINTS OF ENTRY, INTERNATIONAL TRAVEL AND TRANSPORT, AND MASS GATHERINGS

- a. Arrangements were finalized with the MOHW IHR Director for the IHR Assessments of the Contingent Designated Points of Entry, from 22 - 24 November 2021 and the meeting of the IHR Stakeholders Advisory Group on 25 November 2021. – 19 November 2021.

PILLAR 7 – CASE MANAGEMENT, CLINICAL OPERATIONS AND THERAPEUTICS

- a. Procurement of medical equipment and supplies and HEOC equipment was finalized utilizing MOHW approved priority list – 18 November 2021.

PILLAR 9: MAINTAINING ESSENTIAL HEALTH SERVICES AND SYSTEMS

- a. For the Smart Health Care Facilities project, 9 Health Centres are now at the stage of practical completion, including the St. Ann’s Bay Health Centre which is the first Health Centre to complete major retrofitting. Arrangements will be made for the official Handing-Over Event.
- b. Preparations were advanced for activities during World Antimicrobial Awareness Week from 18 – 24 November 2021. – 17 November 2021.

PILLAR 10 - VACCINATION

- a. PAHO CO provided information to MOHW on the delivery of COVID-19 vaccines during the week-18 November 2021
- b. On-going technical guidance was provided for the MOHW, Jamaica on vaccine supply and delivery.

GAPS / CHALLENGES

1. Vaccine hesitancy remains a challenge in Jamaica including among health care workers. Community engagement has been heightened this week with additional vaccination sites being opened in collaboration with the private sector to improve access.
2. The MOHW, Jamaica needs to update the health sector COVID-19 program, protocols, and budget to guide support for the response.

NEEDS

1. JAMAICA

- a. Health EOC strengthening.
- b. Assessment of causes for low .COVID-19 vaccination coverage to guide implementation of appropriate strategies
- c. Support for National Laboratory Services long-term development plan.
- d. PPEs, laboratory equipment, reagents, and supplies.
- e. Medical equipment and supplies for isolation and quarantine facilities, wards, and rooms.
- f. Strengthening of pandemic preparedness planning.

2. BERMUDA

- a. Strengthening of the Health Disaster Management Programme.

3. CAYMAN ISLANDS

- a. Strengthening of the Health Disaster Management Programme and surveillance were noted as priorities to enhance the COVID-19 and any other responses for health emergencies.